

Being a part of Lot No. 4, of NORTH BANK OFFICE PARK, a subdivision of record in Plat Book 58, Page 49, Recorder's Office, Franklin County Ohio, being more particularly described as follows:

Beginning at an iron pin marking the northeast corner of said Lot No. 4, thence and along a part of the easterly line of said Lot No. 4, South 5 degrees 38 minutes 18 seconds East, a distance of 45.00 ft. to a point in the south line of North Bank Road;

Thence and with the South Line of North Bank Road, extended westerly, South 84 degrees 21 minutes 42 seconds West, a distance of 28.00 ft. to a point;

Thence South 43 degrees 21 minutes 01 seconds West, a distance of 60.22 ft. to a point;

Thence South 5 degrees 38 minutes 18 seconds East, a distance of 32.65 ft. to a point;

Thence South 43 degrees 21 minutes 01 seconds West, a distance of 68.33 ft. to a point;

Thence South 84 degrees 21 minutes 42 seconds West, a distance of 25.00 ft. to a point;

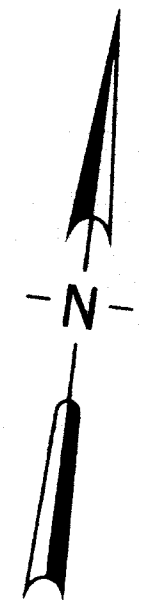
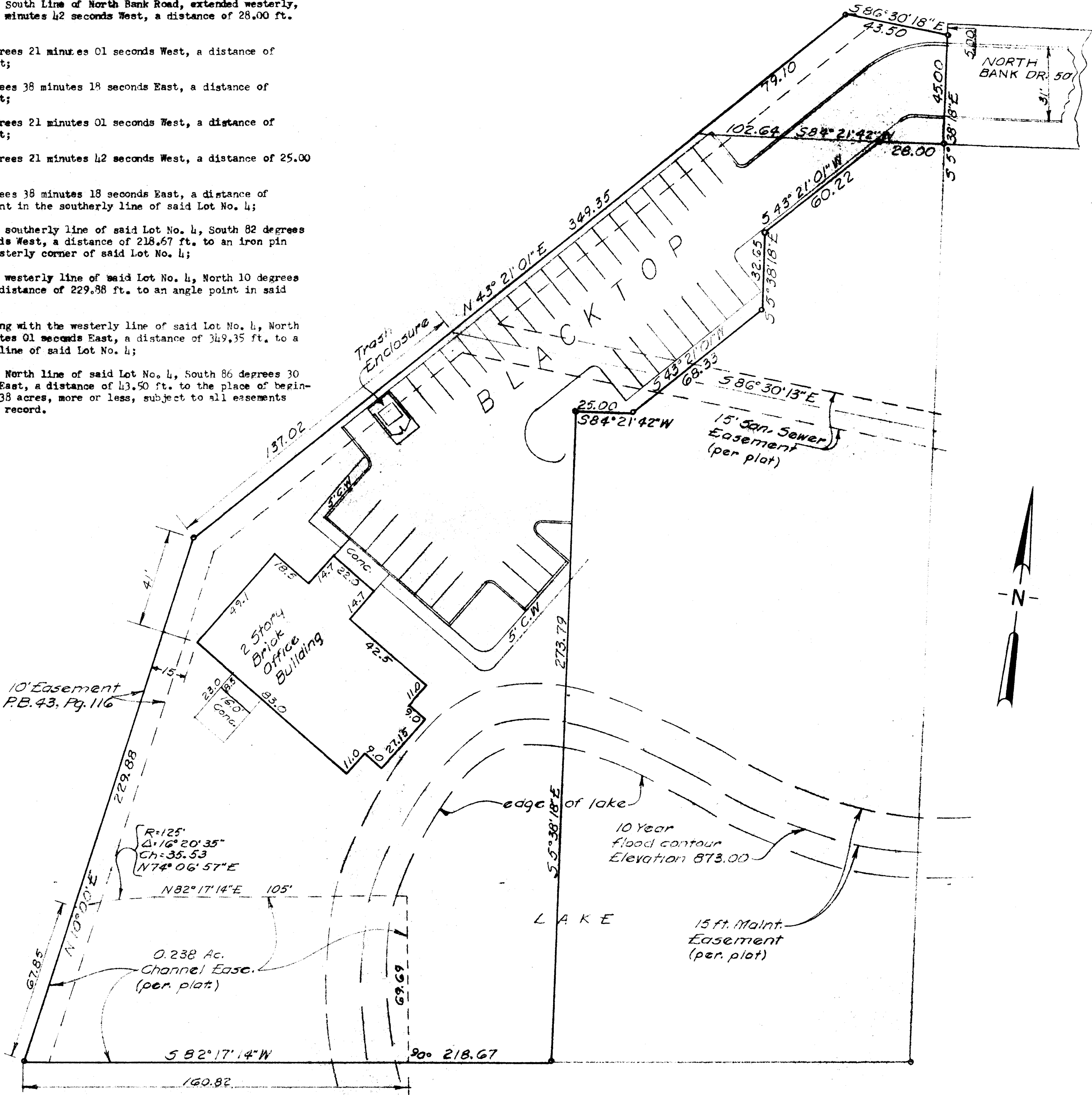
Thence South 5 degrees 38 minutes 18 seconds East, a distance of 273.79 ft. to a point in the southerly line of said Lot No. 4;

Thence and with the southerly line of said Lot No. 4, South 82 degrees 17 minutes 14 seconds West, a distance of 218.67 ft. to an iron pin marking the southwesterly corner of said Lot No. 4;

Thence and with the westerly line of said Lot No. 4, North 10 degrees 00 minutes East, a distance of 229.88 ft. to an angle point in said westerly line;

Thence and continuing with the westerly line of said Lot No. 4, North 43 degrees 21 minutes 01 seconds East, a distance of 349.35 ft. to a point in the north line of said Lot No. 4;

Thence and with the North line of said Lot No. 4, South 86 degrees 30 minutes 18 seconds East, a distance of 43.50 ft. to the place of beginning containing 1.438 acres, more or less, subject to all easements and restrictions of record.



I hereby certify to Bank One, NA and Berke Title Insurance Company, that the above plat was prepared from an actual field survey and correctly represents said premises, and that there are no encroachments either way across the property lines.

*Harry L. Greene*  
 Harry L. Greene, Reg. Surveyor No. 4058  
 State of Ohio.

PLAT SHOWING AS BUILT SURVEY OF WEST PART LOT NO. 4, NORTH BANK OFFICE PARK, CITY OF UPPER ARLINGTON, OHIO, PLAT BOOK 58, PAGE 49, RECORDER'S OFFICE, FRANKLIN COUNTY, OHIO. For National Church Residences.

Scale 1" = 30'

Nov. 28, 1984

*Harry L. Greene*  
 Harry L. Greene, Reg. Surveyor No. 4058.