

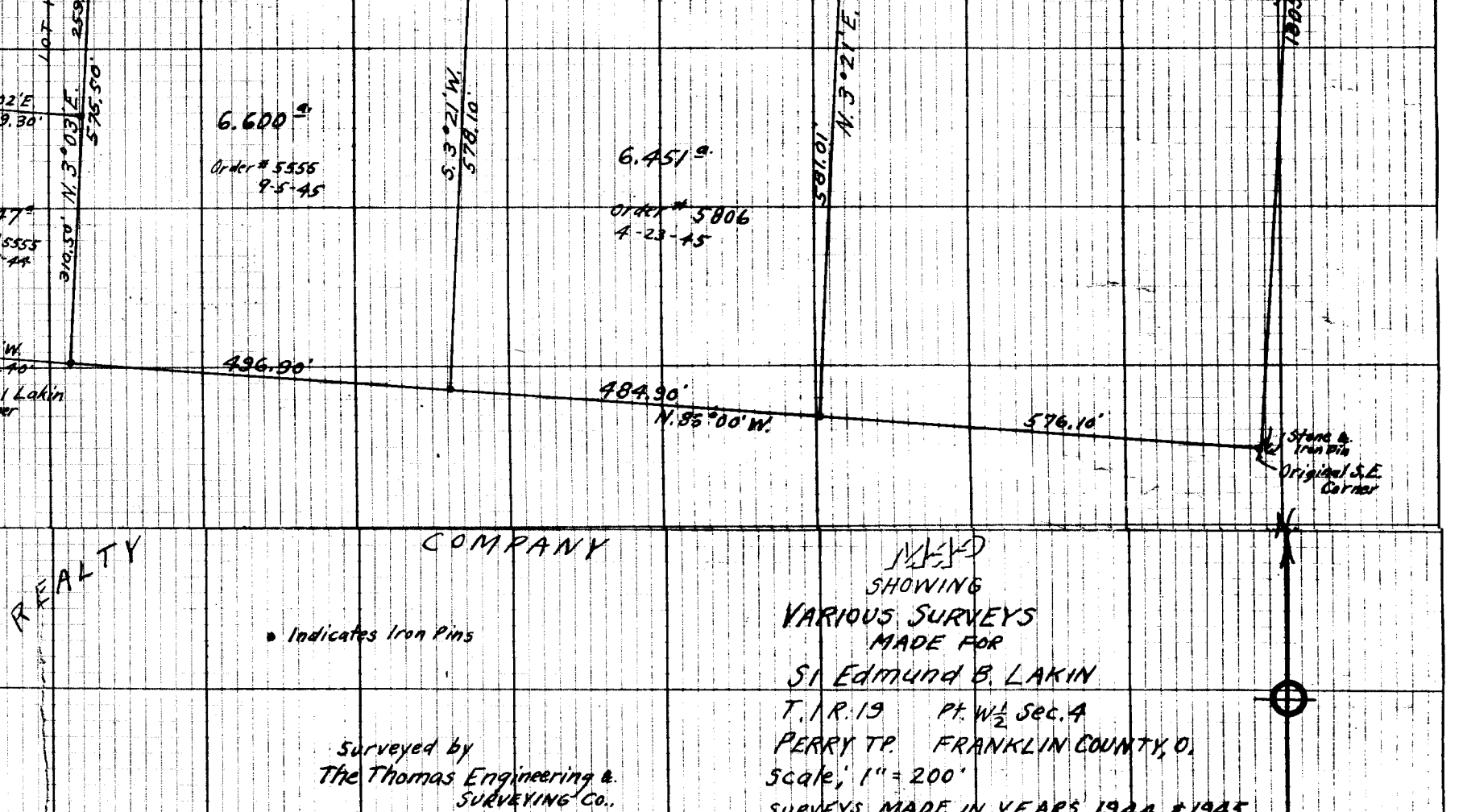
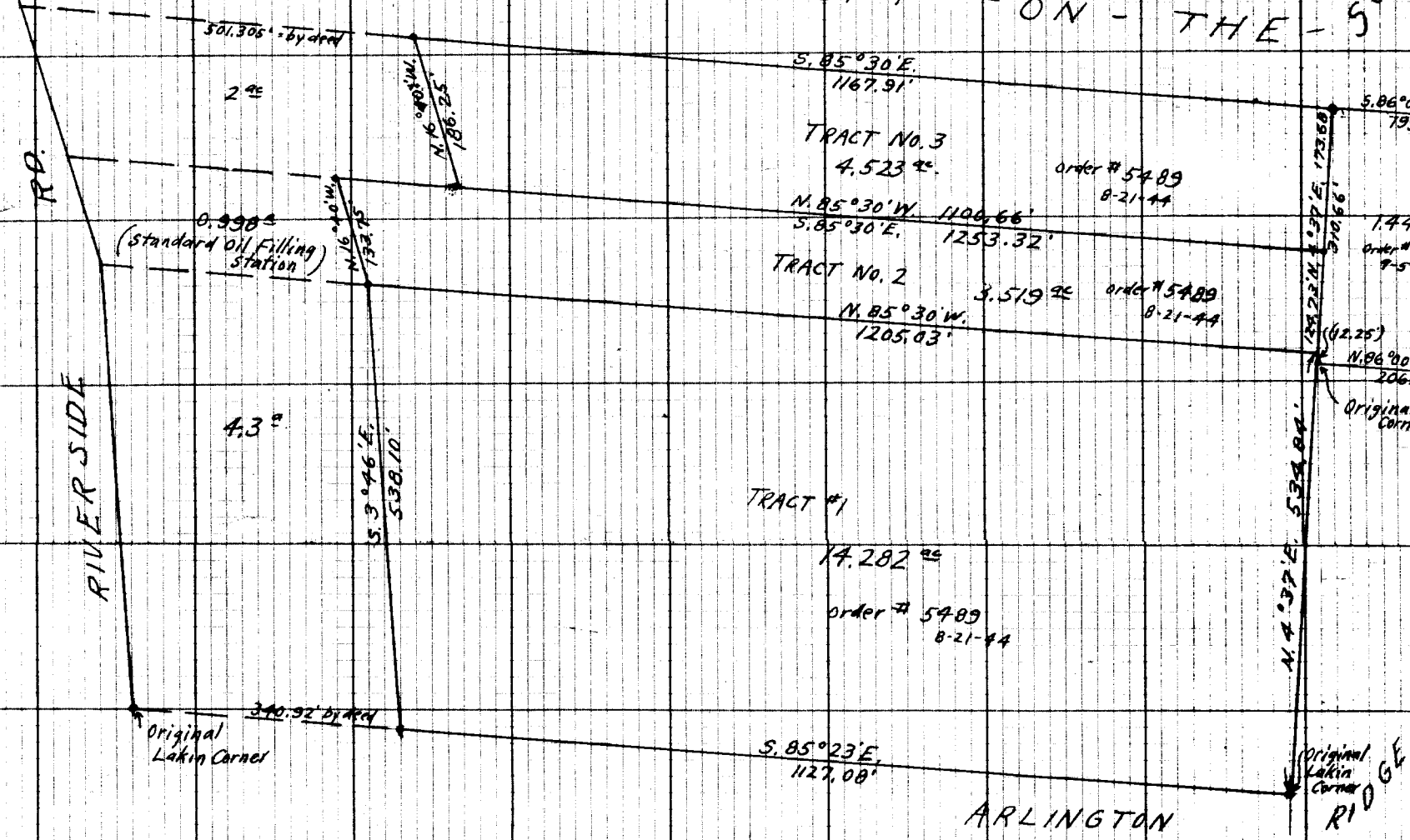
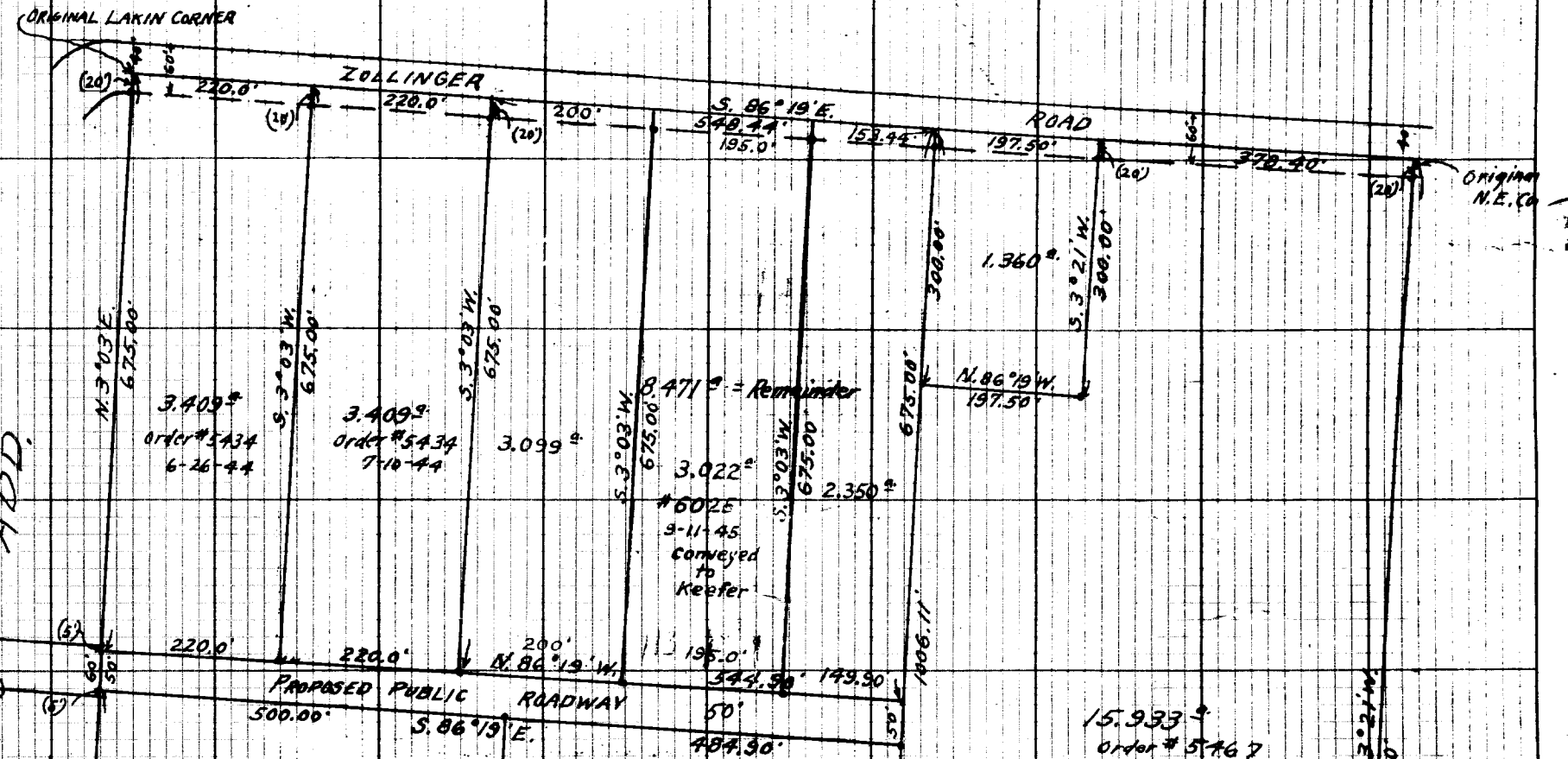
EAST CLEFT - ON - THE - SCIOTO

RIVER SIDE

ADD.

LOT 185

ARLINGTON REALTY COMPANY



• Indicates Iron Pins

Surveyed by
 The Thomas Engineering &
 Surveying Co.,
 Columbus, O.

MEAD
 SHOWING
 VARIOUS SURVEYS
 MADE FOR
 ST. EDMUND B. LAKIN
 T. 1 R. 19 P. 1/2 Sec. 4
 PERRY TWP. FRANKLIN COUNTY, O.
 SCALE, 1" = 200'
 SURVEYS MADE IN YEARS 1944 & 1945

• Indicates Iron Pins
 F. R. HARVEY, Surveyor