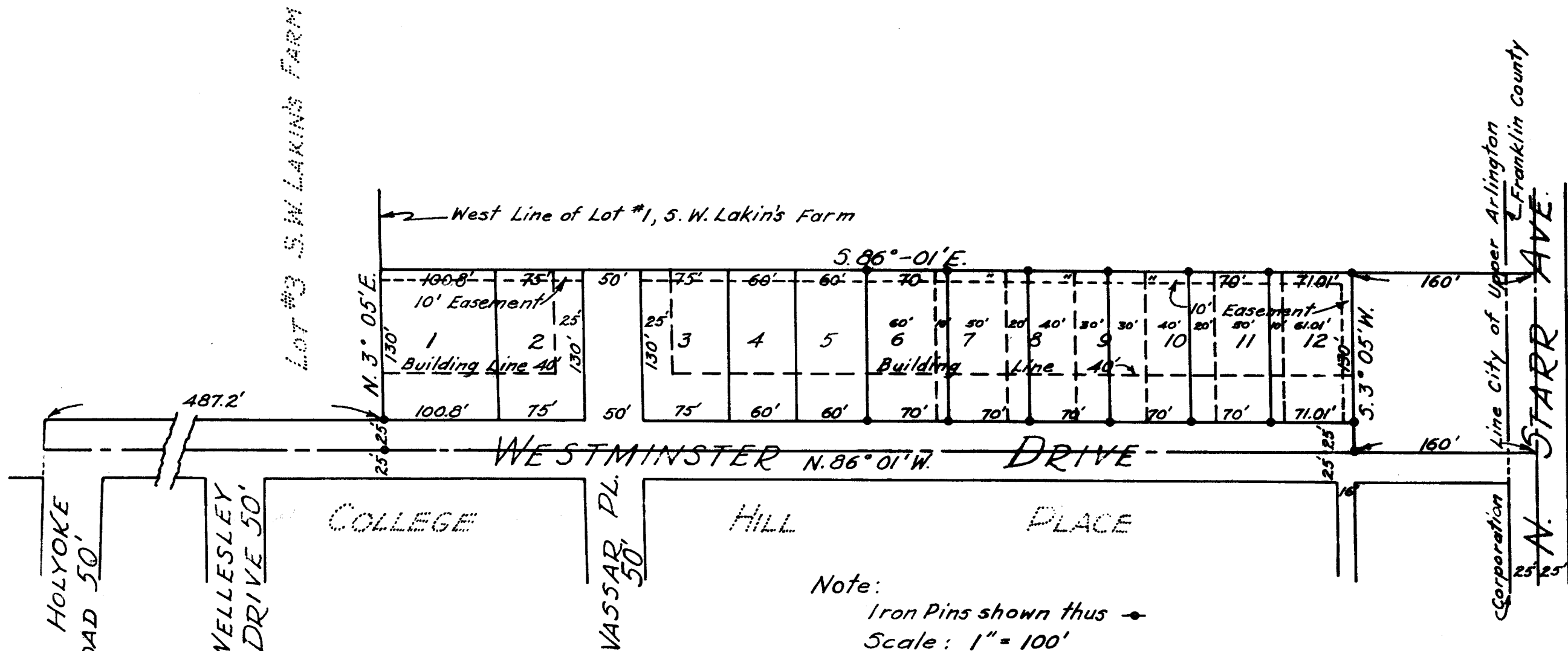


# WESTMINSTER SUBDIVISION



Note:  
 Iron Pins shown thus  $\bullet$   
 Scale: 1" = 100'  
 Oct. 9 - 1952

LOTS 6 to 12 INCLUSIVE, CHANGED AS SHOWN ABOVE.

HARRY L. GREENE  
 Registered Surveyor