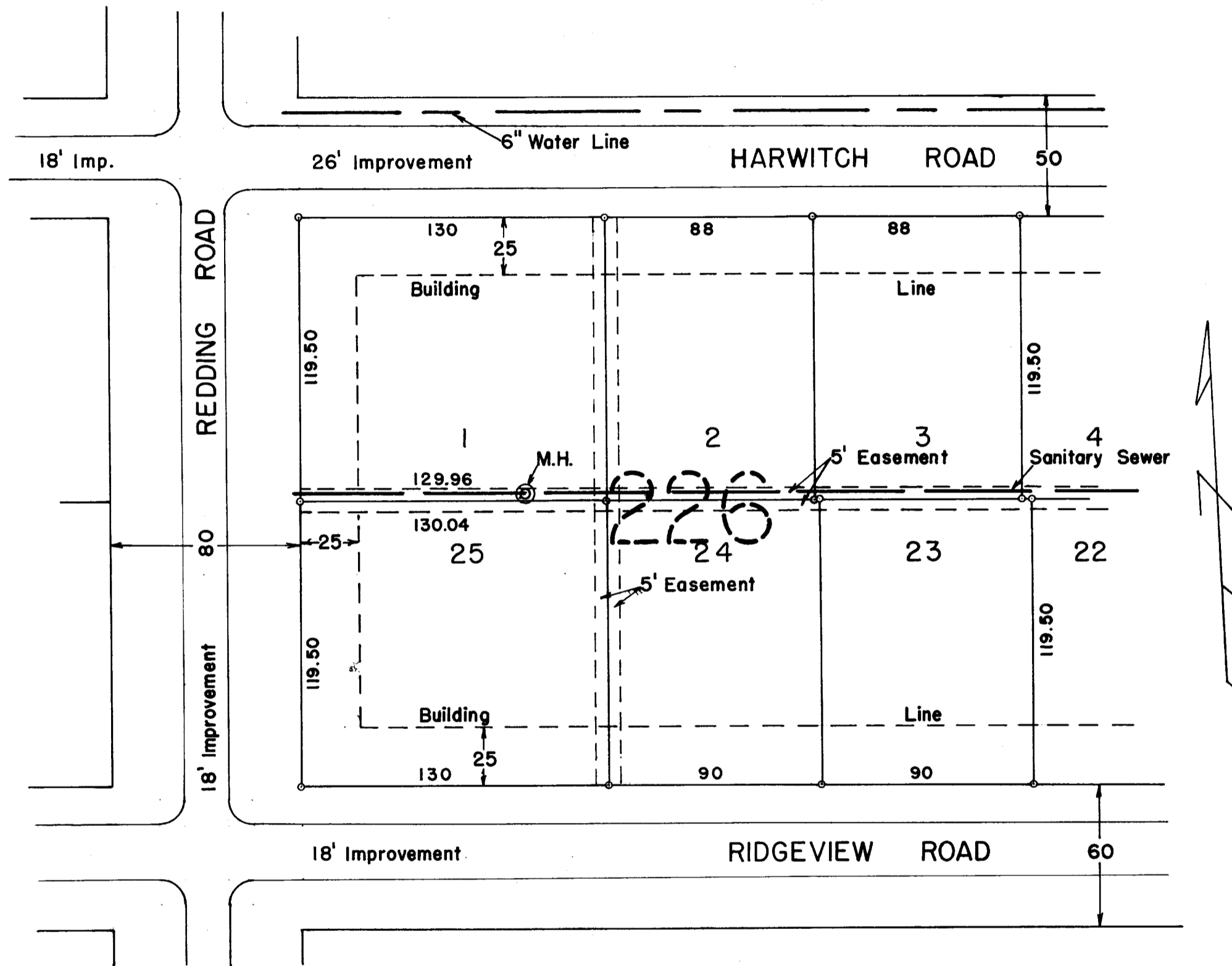


SURVEY OF LOTS NOS.1,2,3,23,24,25 BLOCK NO. 226 MOUNTVIEW PLAGE ADD. EXT.

NO.2 CITY OF UPPER ARLINGTON, PERRY TOWNSHIP, FRANKLIN COUNTY, OHIO.



TO ALL PARTIES INTERESTED IN TITLE TO PREMISES SURVEYED.

Lot corners shown thus: °

Lots Nos. 1, 2, 3, 23, 24, 25 contain 73,621.00 sq. ft. and 1.690 Acs.

Scale: 1" = 50'

Feb. 6, 1950

I certify that I have surveyed and staked Lots Nos. 1, 2, 3, 23, 24, 25, Block No. 226, Upper Arlington, and the results of said survey are correctly shown hereon. There are no encroachments either way across the property lines.

*Frank T. Sayers*  
FRANK T. SAYERS, Reg. Surveyor 3144

