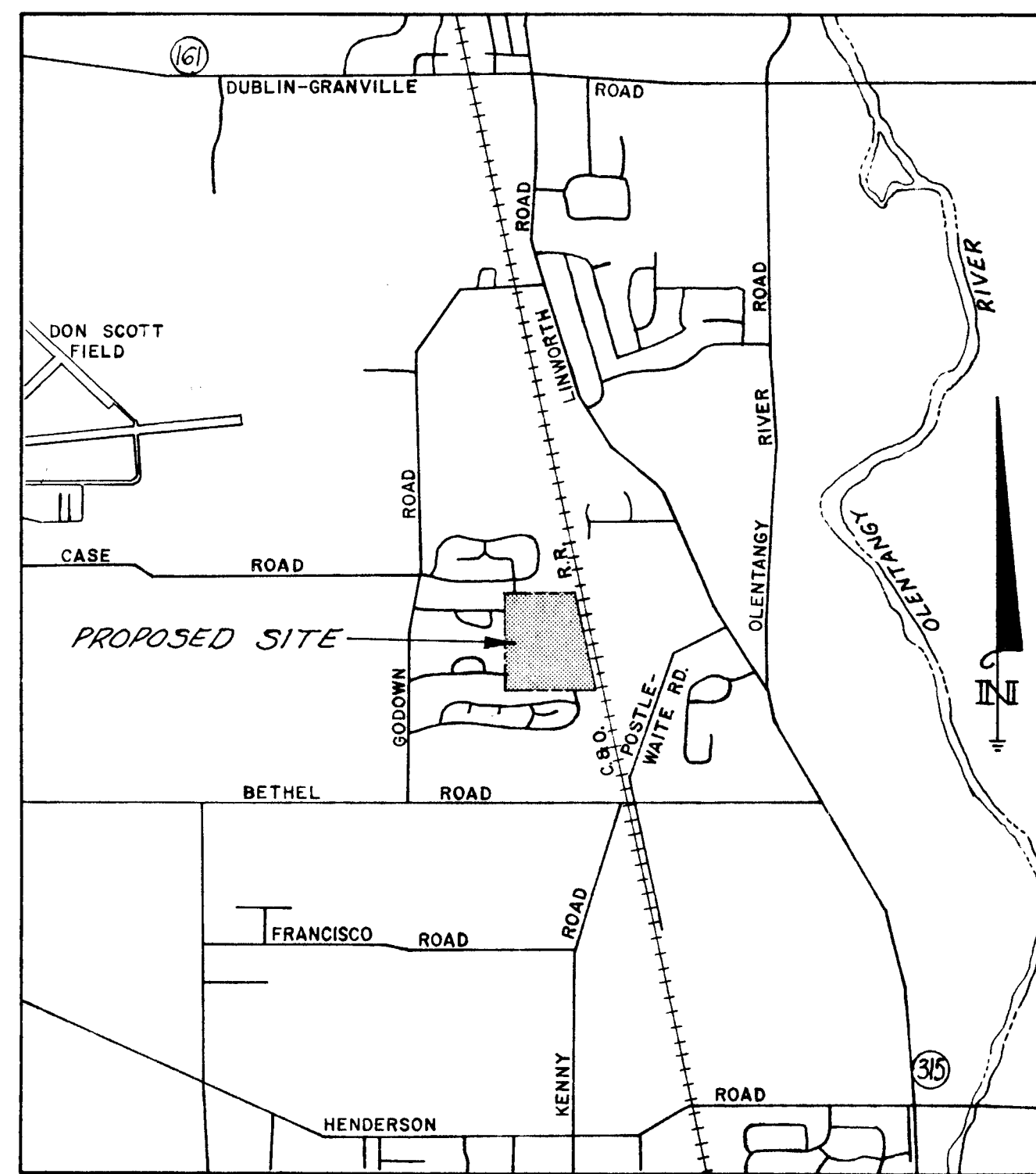


**ESTIMATED QUANTITIES**

ITEM	UNIT	QUANTITY	DESCRIPTION
203	LUMP		SITE EXCAVATION
203	C.Y.	22,600	STREET EXCAVATION WITH EMBANKMENT CONSTRUCTION
306	S.Y.	9,625	PORTLAND CEMENT CONCRETE BASE - RESIDENTIAL (7')
402	TON	670	ASPHALT CONCRETE (1 1/2")
404	TON	670	ASPHALT CONCRETE (1 1/4")
407	S.Y.	9,625	TACK COAT
605	LF	7965	4" SHALLOW PIPE UNDERDRAIN, AS PER PLAN
609	LF	6908	COMBINED CURB & GUTTER
452	S.Y.	1,293	7" PLAIN PORTLAND CEMENT CONCRETE PAVEMENT
453	S.Y.	1,509	6" PORTLAND CEMENT CONCRETE PAVEMENT WITH CONCRETE CURB
901	LF	290	12" NON-REIN. CONCRETE SEWER PIPE, C-14 WITH CONCRETE ENCASEMENT
901	LF	689	12" NON-REIN. CONCRETE SEWER PIPE, C-14
901	LF	77	15" NON-REIN. CONCRETE SEWER PIPE, C-14 WITH CONCRETE ENCASEMENT
901	LF	1126	15" NON-REIN. CONCRETE SEWER PIPE, C-14
901	LF	40	15" NON-REIN. CONCRETE SEWER PIPE, C-14 WITH CONCRETE BACKING
901	LF	19	18" NON-REIN. CONCRETE SEWER PIPE, C-14 WITH CONCRETE BACKING
901	LF	139	18" NON-REIN. CONCRETE SEWER PIPE, C-14
604	EA	6	TYPE A MANHOLES AA-95
604	EA	18	STANDARD CURB INLET AA-520
601	C.Y.	22	KOCK CHANNEL PROTECTION, TYPE B, 18" THICK
602	C.Y.	105	CONCRETE MASONRY (ENDWALL AA-570)
809	EA	12	FIRE HYDRANTS, TYPE "B"
THE FOLLOWING WATER ITEMS SHALL BE SUPPLIED & INSTALLED BY THE DEVELOPER			
801	LF	3060	8" DUCTILE IRON PIPE
801	LF	894	6" DUCTILE IRON PIPE
801	LF	354	3" DUCTILE IRON PIPE
805	LF	2128	3/4" TYPE K COPPER WATER SERVICE
802	EA	5	8" VALVE & BOX
802	EA	14	6" VALVE & BOX (INCLUDES HYDRANT BRANCH VALVE)
805	EA	87	3/4" CORPORATION STOP
802	EA	1	3" VALVE & BOX
805	EA	87	3/4" CURB STOP & BOX

**LOCATION MAP**  
SCALE: 1" = 2,000'



ALL TRAFFIC CONTROL DEVICES SHALL BE FURNISHED, ERECTED, MAINTAINED, AND REMOVED BY THE CONTRACTOR IN ACCORDANCE WITH THE OHIO MANUAL OF TRAFFIC CONTROL DEVICES FOR CONSTRUCTION AND MAINTENANCE OPERATIONS; COPIES OF WHICH ARE AVAILABLE FROM THE OHIO DEPARTMENT OF TRANSPORTATION, BUREAU OF TRAFFIC, 450 EAST TOWN STREET, COLUMBUS, OHIO 43215.

*Wally Crabtree 3-26-73* HYDRANT STRUCTURES ONLY  
HYDRANT SUPERVISOR, DIVISION OF FIRE

*Wally Crabtree 4-4-73* ELECTRIC STRUCTURES ONLY  
SUPERINTENDENT, DIVISION OF ELECTRICITY

*Wally Crabtree 4-3-73* WATER STRUCTURES ONLY  
SUPERINTENDENT, DIVISION OF WATER

*Wally Crabtree 4-4-73*  
ENGINEER IN CHARGE, DIVISION OF ENGINEERING

*Wally Crabtree 4-4-73*  
CHIEF ENGINEER, DIVISION OF SEWERAGE AND DRAINAGE

*Wally Crabtree 4-10-73*  
CITY ENGINEER

*Wally Crabtree 4-10-73*  
DIRECTOR - DEPARTMENT OF DEVELOPMENT

*Wally Crabtree 4-10-73*  
DIRECTOR OF PUBLIC SERVICE

*Wally Crabtree 4-10-73*  
CHIEF ENGINEER, DIVISION OF TRAFFIC ENGINEERING

**GENERAL NOTES**

THE CONTRACTOR SHALL INCLUDE FOR PAYMENT UNDER VARIOUS STORM SEWER ITEMS THE COST OF THE DISPOSAL OF ALL TREES, BRUSH AND STUMPS WITHIN SCOPE OF PROPOSED STORM SEWER.

THE STANDARD CITY OF COLUMBUS, CONSTRUCTION AND MATERIAL SPECIFICATIONS, DATED JAN. 1, 1969 AND ANY SUPPLEMENTS THERETO SHALL GOVERN ALL CONSTRUCTION ITEMS THAT ARE PART OF THIS PLAN.

THE BACKFILLING OF ALL TRENCHES AND STRUCTURES SHALL CONFORM TO CITY OF COLUMBUS STANDARDS.

APPROVAL OF THESE PLANS IS CONTINGENT UPON ALL STORM AND SANITARY SEWER EASEMENTS, REQUIRED FOR CONSTRUCTION OF THE WORK, BEING SECURED AND SUBMITTED TO THIS OFFICE FOR RECORDING PRIOR TO COMMENCEMENT OF WORK, AND NO WORK WHICH REQUIRES A SEWER EASEMENT WILL BE ALLOWED TO PROCEED UNTIL THIS IS DONE.

ENCROACHMENTS NOT REMOVED BY OWNER SHALL BE DISPOSED OF BY THE CONTRACTOR AS DIRECTED.

AT ALL POINTS OF CROSSING WATER MAINS OR SEWERS THE BACKFILL SHALL BE OF GRANULAR MATERIAL BETWEEN THE DEEPER AND SHALLOWER PIPE AS DIRECTED BY THE CITY OF COLUMBUS.

THE CONTRACTOR SHALL INCLUDE UNDER ITEM 203 THE COST OF REMOVAL AND DISPOSAL OF ALL TREES, BRUSH AND STUMPS WITHIN THE RIGHT-OF-WAY.

THE CONTRACTOR SHALL INVESTIGATE AND LOCATE ALL UTILITIES PRIOR TO CONSTRUCTION.

THE PROPOSED SANITARY SEWER LINES ARE TO BE CONSTRUCTED UNDER PLAN MM-2196 PRIOR TO STREET IMPROVEMENT.

IN ALL CONFLICTS IN GRADE BETWEEN WATER LINES AND STORM SEWERS THE WATER LINES SHALL BE LOWERED DURING CONSTRUCTION.

ALL WATER LINE MATERIALS AND INSTALLATION SHALL BE IN ACCORDANCE WITH CURRENT RULES AND REGULATIONS OF THE CITY OF COLUMBUS, DIVISION OF WATER.

WATER LINES SHALL BE LAID WITH A MINIMUM OF 4'-6" FROM TOP OF FINISHED CURB TO CENTERLINE OF WATER LINE.

ONLY "COLUMBUS STANDARD" TYPE OF FIRE HYDRANTS WILL BE APPROVED FOR USE.

ALL FIRE HYDRANTS SHALL BE SET PLUMB, 24" BACK FROM BACK OF CURB TO THE CENTERLINE OF THE STANDPIPE, AND TO THE GRADE LINE SHOWN ON THE FINISHED GRADE. THE ABOVE INSTALLATION MUST BE APPROVED BY THE DIVISION OF FIRE OF THE CITY OF COLUMBUS. FIRE HYDRANTS SHALL BE SET TO CLEAR DRIVEWAY OPENINGS BY MINIMUM OF 6'.

ALL WATER LINE TRENCHES SHALL BE BACKFILLED IN ACCORDANCE WITH ITEM 801 OF THE CONSTRUCTION AND MATERIAL SPECIFICATIONS OF THE CITY OF COLUMBUS.

THE DEVELOPER SHALL ENTER INTO AN AGREEMENT WITH CITY OF COLUMBUS, DIVISION OF WATER IN ACCORDANCE WITH SECTION 105.15 OF THE COLUMBUS CITY CODES PRIOR TO CONSTRUCTING ANY WATERLINE.

A TAP PERMIT FOR EACH WATER SERVICE MUST BE OBTAINED FROM THE DIVISION OF WATER BEFORE THE TAPS ARE MADE INTO THE WATER LINE.

WATER SERVICE BOXES SHALL BE LOCATED 12 INCHES FROM THE EDGE OF PROPOSED SIDEWALKS BETWEEN THE SIDEWALK AND THE CURB.

ALL STORM SEWER PIPE 21 INCH DIAMETER AND OVER, UNLESS OTHERWISE DESIGNATED ON THE PLAN, SHALL BE REINFORCED CONCRETE PIPE CLASS II CONFORMING TO A.S.T.M. SPECIFICATION C-76.

ALL STORM SEWER PIPE 18 INCH DIAMETER AND UNDER, UNLESS OTHERWISE DESIGNATED ON THE PLANS, SHALL BE NON-REINFORCED EXTRA STRENGTH CONCRETE PIPE IN ACCORDANCE WITH A.S.T.M. SPECIFICATIONS C-14 TABLE II.

WHEREVER THE STORM SEWER IS TO BE CONSTRUCTED WITH AN EMBANKMENT SECTION AND THE TOP OF THE PIPE IS LESS THAN 2.5 FEET BELOW THE EXISTING SURFACE THE EMBANKMENT SHALL BE CONSTRUCTED (MINIMUM COVER 2.5 FEET) PRIOR TO SEWER CONSTRUCTION.

WHERE WATER MAIN IS TO BE INSTALLED IN EMBANKMENT AREAS THE EMBANKMENT SHALL BE PLACED AND COMPACTED IN ACCORDANCE WITH THE SPECIFICATIONS PRIOR TO THE INSTALLATION OF THE WATER MAIN.

UNLESS OTHERWISE DESIGNATED ON THE PLANS ALL STORM SEWERS SHALL BE CONSTRUCTED WITH TYPE I BEDDING IN ACCORDANCE WITH ITEM 801 OF THE CONSTRUCTION AND MATERIAL SPECIFICATIONS OF THE CITY OF COLUMBUS.

ALL PORTLAND CEMENT CONCRETE SPECIFIED 1.5 1/2" MIX SHALL NOT CONTAIN LESS THAN 6 BAGS OF PORTLAND CEMENT PER CUBIC YARD OF CONCRETE.

DRIVEWAY PERMITS MUST BE SECURED BY THE PROPERTY OWNER TO AUTHORIZE ALTERATIONS OF CURB AND CUTTER FOR DRIVEWAY ENTRANCES.

DRIVEWAY ENTRANCES SHALL CONFORM WITH THE CITY OF COLUMBUS PLAN OF STANDARD DRIVEWAY (6" PORTLAND CEMENT CONCRETE, CLASS F, ITEM 452).

WHERE SEWER CONSTRUCTION WITHIN PROPOSED OR DEDICATED RIGHTS-OF-WAY IS INVOLVED, THE BACKFILL SHALL BE COMPACTED TO MEET REQUIREMENTS EQUAL TO THOSE OF SECTION 203.12 OF SPECIFICATIONS OR SHALL CONSIST OF AN APPROVED GRANULAR MATERIAL. COST OF THIS WORK SHALL BE INCLUDED IN THE PRICE BID FOR THE VARIOUS SEWER ITEMS.

ALL SECTIONS REQUIRING EMBANKMENT AND COMPACTION SHALL BE SCALPED IN ACCORDANCE WITH THE CITY OF COLUMBUS CONSTRUCTION AND MATERIAL SPECIFICATIONS (201.03) CLEARING AND GRUBBING, 201.04 SCALPING, AND 203.12 EMBANKMENT.

APPROVAL OF THESE PLANS IS CONTINGENT UPON ALL PREVIOUSLY APPROVED WATER LINE EASEMENTS BEING RECORDED AND SUBMITTED TO DIVISION OF WATER PRIOR TO CONSTRUCTION.

ALL WATER LINE MATERIALS SHALL BE FURNISHED AND INSTALLED BY THE DEVELOPER AND UPON ACCEPTANCE THE WATER LINE AND ALL APPURTENANCES SHALL BECOME THE PROPERTY OF THE DIVISION OF WATER, CITY OF COLUMBUS.

ALL ELEVATIONS ARE BASED ON USGS DATUM.

**BENCH MARKS**

SANITARY MANHOLE RIM IN SOUTHEAST CORNER OF LOT #21.  
ELEV = 814.71

SANITARY MANHOLE RIM 10' SOUTH OF SOUTHEAST PROPERTY CORNER OF LOT #67.  
ELEV = 827.68

SANITARY MANHOLE RIM 78' WEST OF SOUTHWEST PROPERTY CORNER OF LOT #65.  
ELEV = 842.76

RR SPIKE IN SOUTH SIDE OF DEAD TREE ALONG NORTH PROPERTY LINE OF LOT #31.  
ELEV = 842.96

BURGESS & NIPLE, LIMITED  
CONSULTING ENGINEERS  
COLUMBUS, OHIO

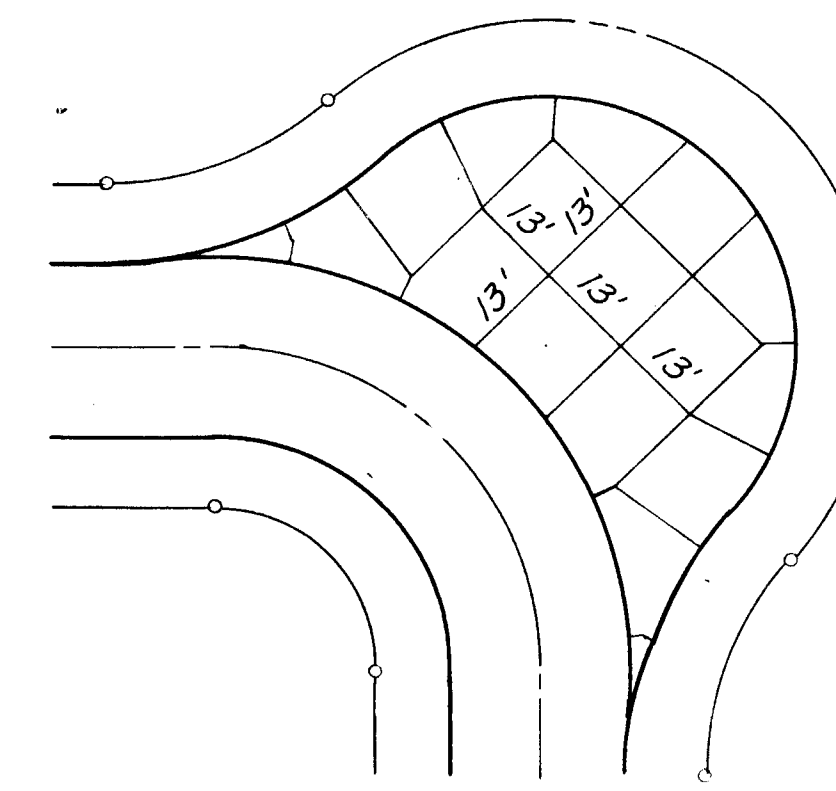
*Wally Crabtree*  
REGISTERED ENGINEER NO. 32105

CITY OF COLUMBUS, OHIO  
DEPARTMENT OF PUBLIC SERVICE  
DIVISION OF ENGINEERING AND CONSTRUCTION

PLAN FOR IMPROVEMENT OF  
**WISHING WELL ACRES**

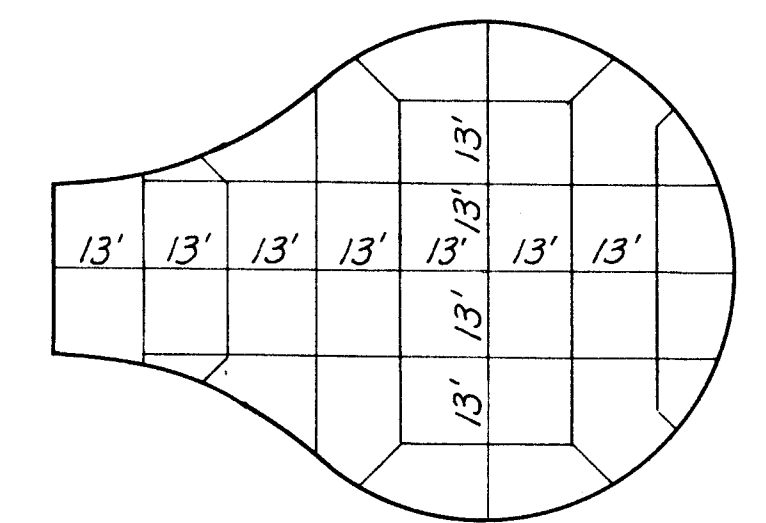
**STANDARD DRAWINGS**

- 1093 DR. A
  - AA-S11
  - AA-S3
  - AA-S5
  - L-6306
  - L-6310
  - L-6312
  - L-6316
  - L-6311
  - L-7001
  - 1096 DR. A
  - AA-S20
  - AA-S36
  - AA-S35
  - 1236 DR. A
  - L-6309
  - L-4409
  - 1241 DR. A
  - 1242 DR. A
  - AA-S19
- DETAIL COMBINED CURB & GUTTER
  - TYPE I BEDDING 6" TO 27" DIAMETER
  - STANDARD MANHOLE STEPS
  - TYPE A MANHOLE
  - CONCRETE VALVE SUPPORTS
  - BACKING FOR VERTICAL BENDS
  - BACKING FOR TEES
  - COLUMBUS STANDARD HEAVY DUTY VALVE BOX
  - BACKING FOR BENDS
  - THURST BLOCK DETAIL FOR END OF PIPE
  - DETAIL OF TYPICAL 24 FT. SECTION (1" CONCRETE BASE)
  - STANDARD CURB INLET
  - CAST IRON TOP FOR STANDARD MANHOLE
  - CASTING FOR CURB INLETS
  - 24' SECTION WITH CONCRETE CURB
  - TYPICAL TRENCH
  - TYPICAL HYDRANT SETTING-TYPE B
  - EYEBROW TYPICAL SECTION
  - 6" CONCRETE CURB & GUTTER
  - PIPE CULVERT ENDWALL



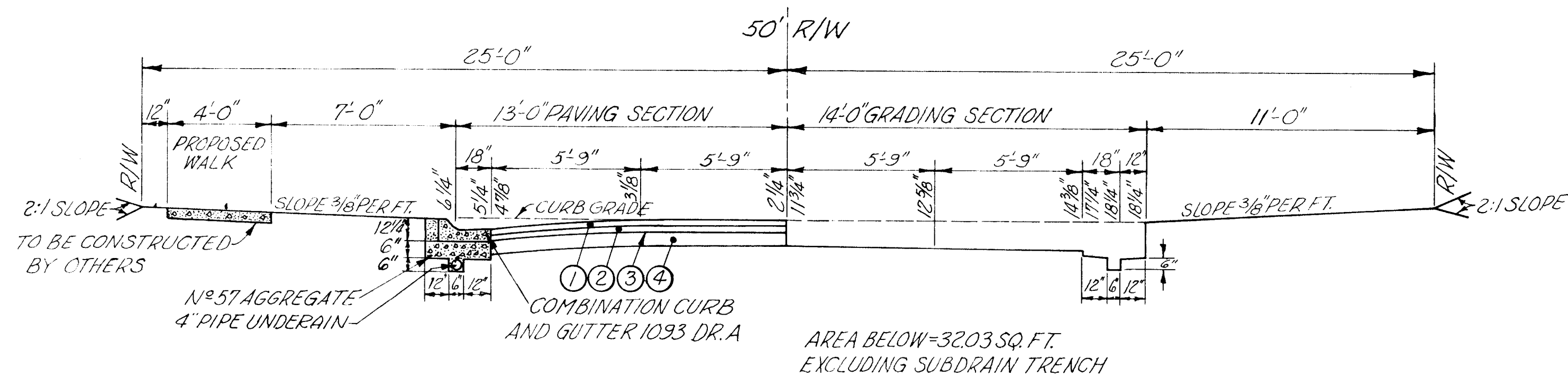
TYPICAL EYEBROW JOINT DETAIL

SCALE: 1"=30'



TYPICAL CUL-DE-SAC JOINT DETAIL

SCALE: 1"=30'

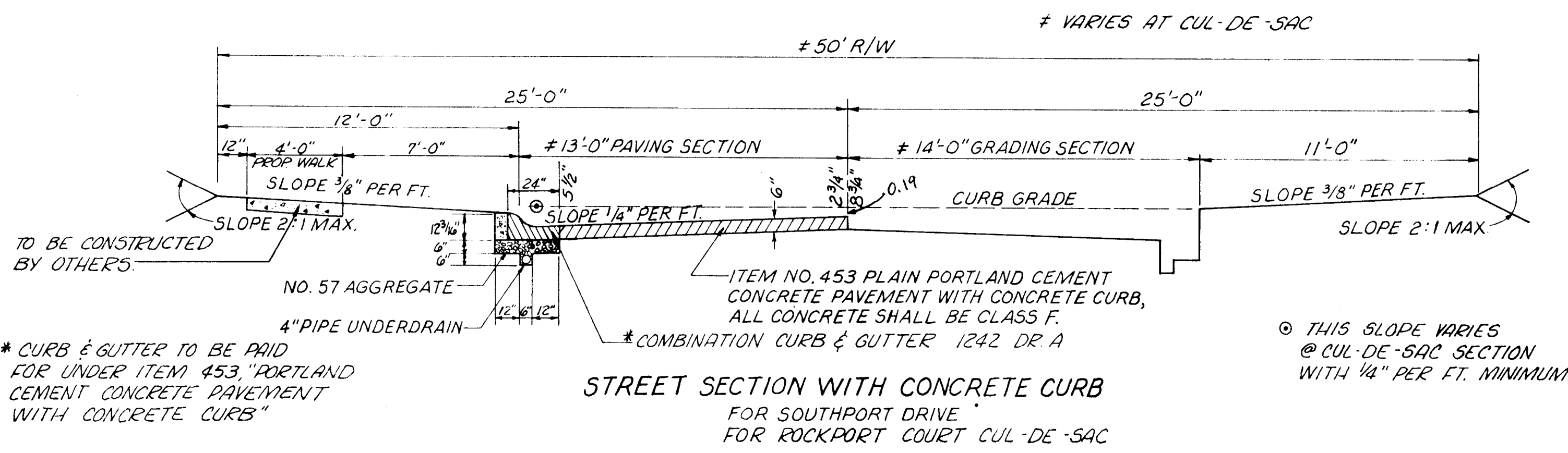


TYPICAL STREET SECTION

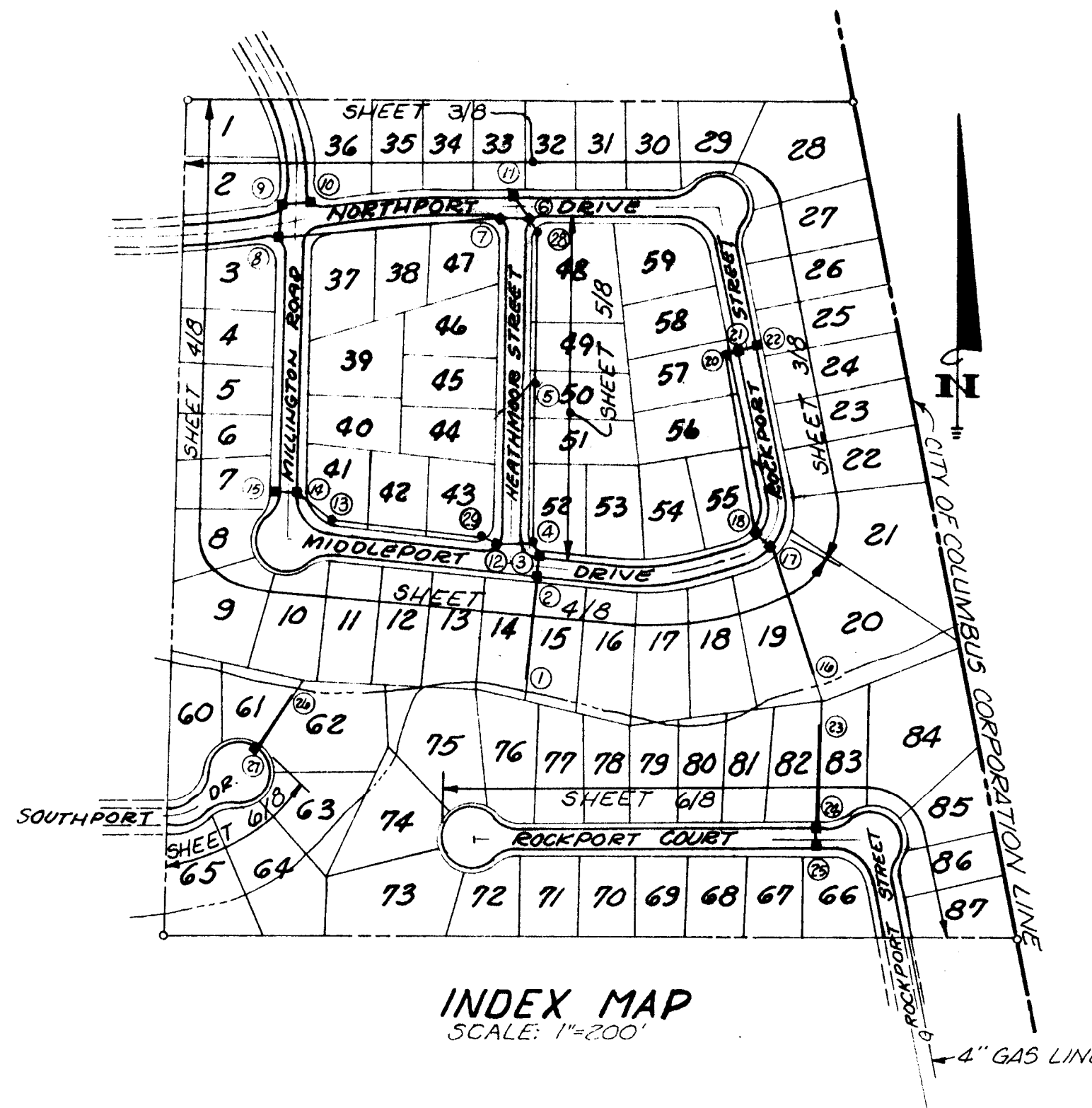
- ① 1 1/4" HOT MIXED, HOT LAID ASPHALT CONCRETE, ITEM 404 (85-100).
- ② 1 1/4" HOT MIXED, HOT LAID ASPHALT CONCRETE, ITEM 402 (85-100).
- ③ TACK COAT, ITEM 407 BITUMINOUS MATERIAL, 702.02, RC-70 OR RC-250 OR 702.04, RS-1, RS-2 OR MS-2, APPLIED 0.1 GAL. PER SQ. YD. AND COVER CONSISTING OF CAUSHED GRAVEL OR LIMESTONE SIZE N#9.
- ④ 1" PORTLAND CEMENT CONCRETE BASE-RESIDENTIAL ITEM 306.

**TYPICAL STREET SECTION APPLIES TO:**

NORTHPORT DRIVE	STA. 0+00.00 TO STA. 7+19.59
MILLINGTON ROAD	STA. 0+00.00 TO STA. 5+88.64
HEATHMOOR STREET	STA. 0+00.00 TO STA. 5+28.05
ROCKPORT STREET (NORTH)	STA. 0+55.49 TO STA. 4+82.54
MIDDLEPORT DRIVE	STA. 0+53.44 TO STA. 7+14.10
ROCKPORT COURT	STA. 1+92.95 TO STA. 6+31.89
ROCKPORT STREET (SOUTH)	STA. 0-14.00 TO STA. 0+31.93

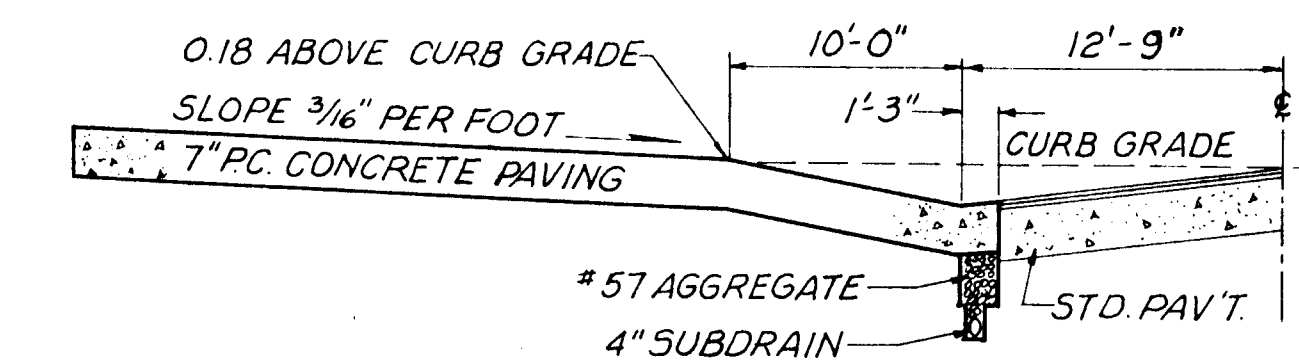


STREET SECTION WITH CONCRETE CURB  
FOR SOUTHPORT DRIVE  
FOR ROCKPORT COURT CUL-DE-SAC



INDEX MAP  
SCALE: 1"=200'

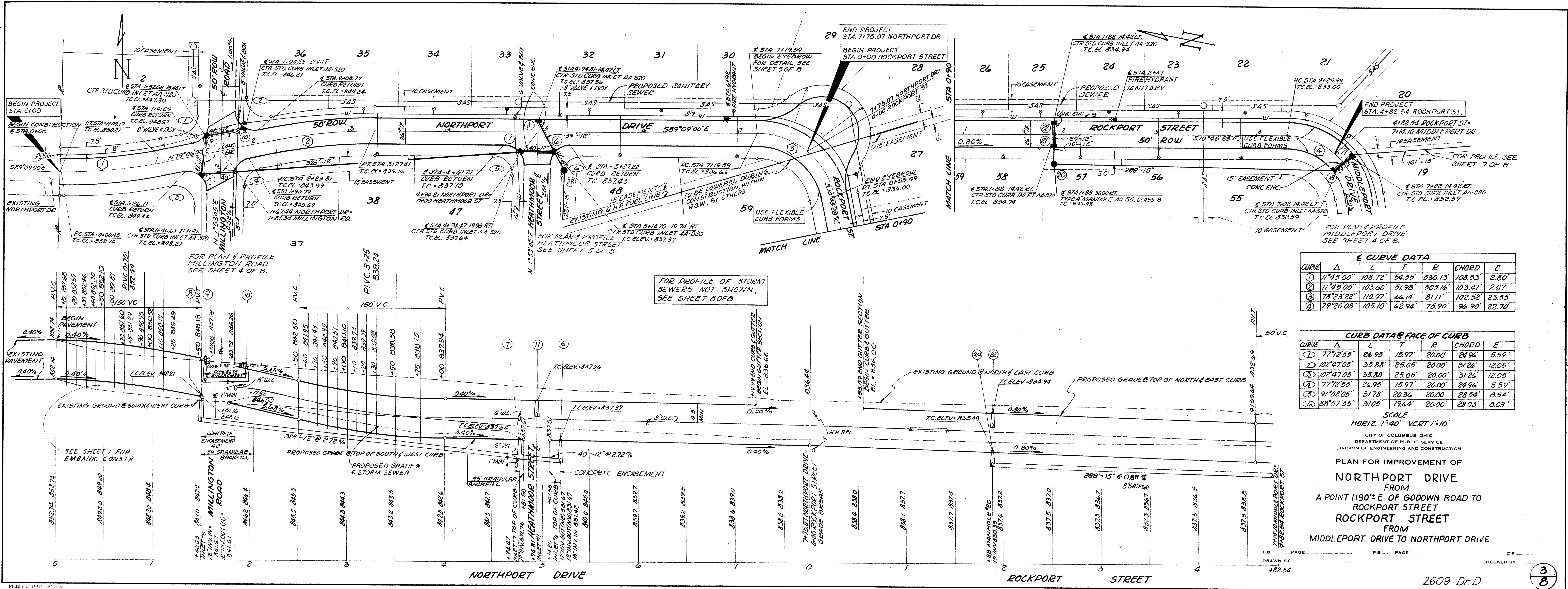
NOTE:  
THE PROPOSED OWNERS OF LOTS # 12, 13, 14, 15, 16, 17, 18, 19, 20, 61, 62, 63, 64, 65, 74, 75, 79, 80 AND 81 WHICH HAVE A STREAM CROSSING THE REAR OF THEIR PROPERTY SHALL BE RESPONSIBLE FOR MAINTAINING SAID STREAM. ALL FUTURE TITLE TRANSFERS SHALL CARRY A PROTECTIVE COVENANT OBLIGATING FUTURE OWNERS TO MAINTAIN THE NATURAL WATER COURSES FOR THE PURPOSE FOR WHICH THEY WERE INTENDED IF THE OWNERS OF THE ABOVE MENTIONED LOTS PETITION THE CITY OF COLUMBUS TO ENCLOSE SAID STREAM THEY SHALL DO SO AT THEIR OWN EXPENSE.



TYPICAL EYEBROW SECTION

CITY OF COLUMBUS, OHIO  
DEPARTMENT OF PUBLIC SERVICE  
DIVISION OF ENGINEERING AND CONSTRUCTION  
PLAN FOR IMPROVEMENT OF  
WISHING WELL ACRES

2609 Dr. D



**Curve Data**

Curve	Δ	L	T	R	CHORD	E
1	11°45'00"	108.72	54.55	530.13	108.53	2.80'
2	11°39'00"	103.60	51.98	505.16	103.41	2.27'
3	78°23'22"	110.97	44.14	81.11	102.52	23.55'
4	79°20'08"	105.10	42.94	75.90	94.90	22.70'

**Curb Data @ Face of Curbs**

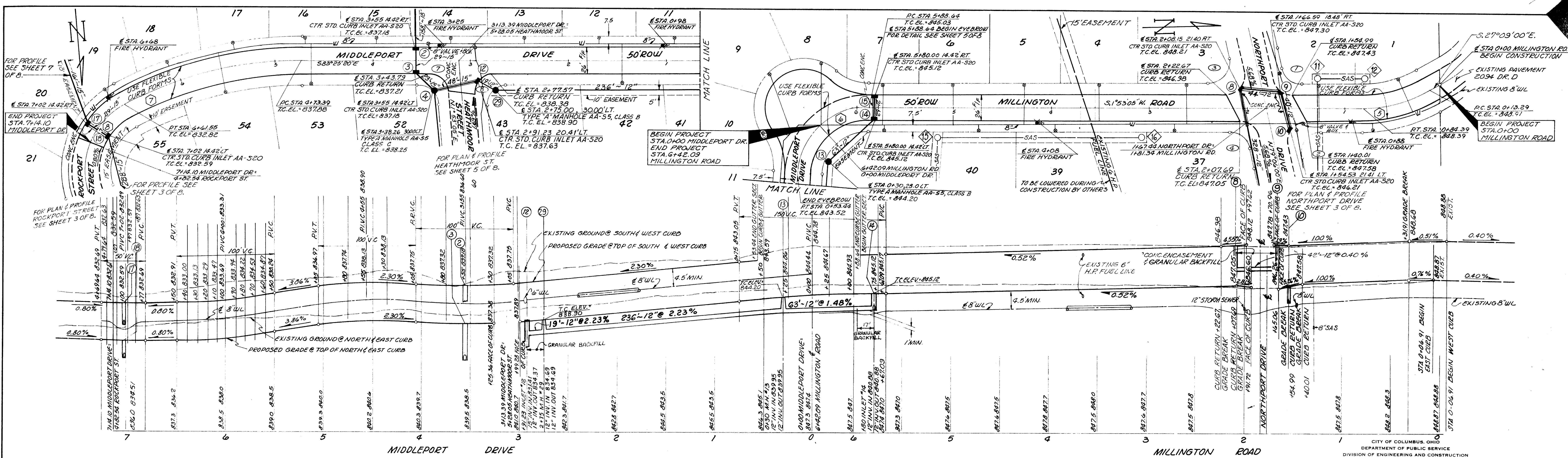
Curve	Δ	L	T	E	CHORD	E
1	77°12'55"	26.95	15.97	20.00	28.96	5.59'
2	102°47'05"	35.88	25.05	20.00	31.26	12.05'
3	102°47'05"	35.88	25.05	20.00	31.26	12.05'
4	77°12'55"	26.95	15.97	20.00	28.96	5.59'
5	91°02'05"	31.78	20.36	20.00	28.84	8.54'
6	88°57'55"	31.05	19.64	20.00	28.03	8.03'

SCALE  
 HORIZ 1"=40'  
 VERT 1"=10'

CITY OF COLUMBUS, OHIO  
 DEPARTMENT OF PUBLIC SERVICE  
 DIVISION OF ENGINEERING AND CONSTRUCTION

PLAN FOR IMPROVEMENT OF  
**NORTHPORT DRIVE**  
 FROM  
 A POINT 1190°E. OF GODDOWN ROAD TO  
 ROCKPORT STREET  
**ROCKPORT STREET**  
 FROM  
 MIDDLEPORT DRIVE TO NORTHPORT DRIVE

DATE: \_\_\_\_\_ PAGE: \_\_\_\_\_ OF \_\_\_\_\_  
 DRAWN BY: \_\_\_\_\_ CHECKED BY: \_\_\_\_\_  
 482.54



CURVE DATA						
CURVE	Δ	L	T	R	CHORD	C
①	29°02'05"	71.10	36.33'	140.30'	70.34'	4.63'
②	85°18'25"	106.89	46.14'	71.79'	97.28'	25.82'
③	28°00'00"	188.16'	96.00'	385.03'	186.29'	11.79'
④	79°20'08"	105.10'	62.94'	75.90'	96.90'	22.70'

CURB DATA @ FACE OF CURB						
CURVE	Δ	L	T	R	CHORD	E
①	77°12'55"	26.95'	15.97'	20.00'	24.96'	5.59'
②	102°47'05"	35.88'	25.05'	20.00'	31.26'	12.05'
③	102°47'05"	35.88'	25.05'	20.00'	31.26'	12.05'
④	77°12'55"	26.95'	15.97'	20.00'	24.96'	5.59'
⑤	85°18'25"	29.78'	18.43'	20.00'	27.10'	7.19'
⑥	94°41'35"	33.05'	21.71'	20.00'	29.42'	9.52'

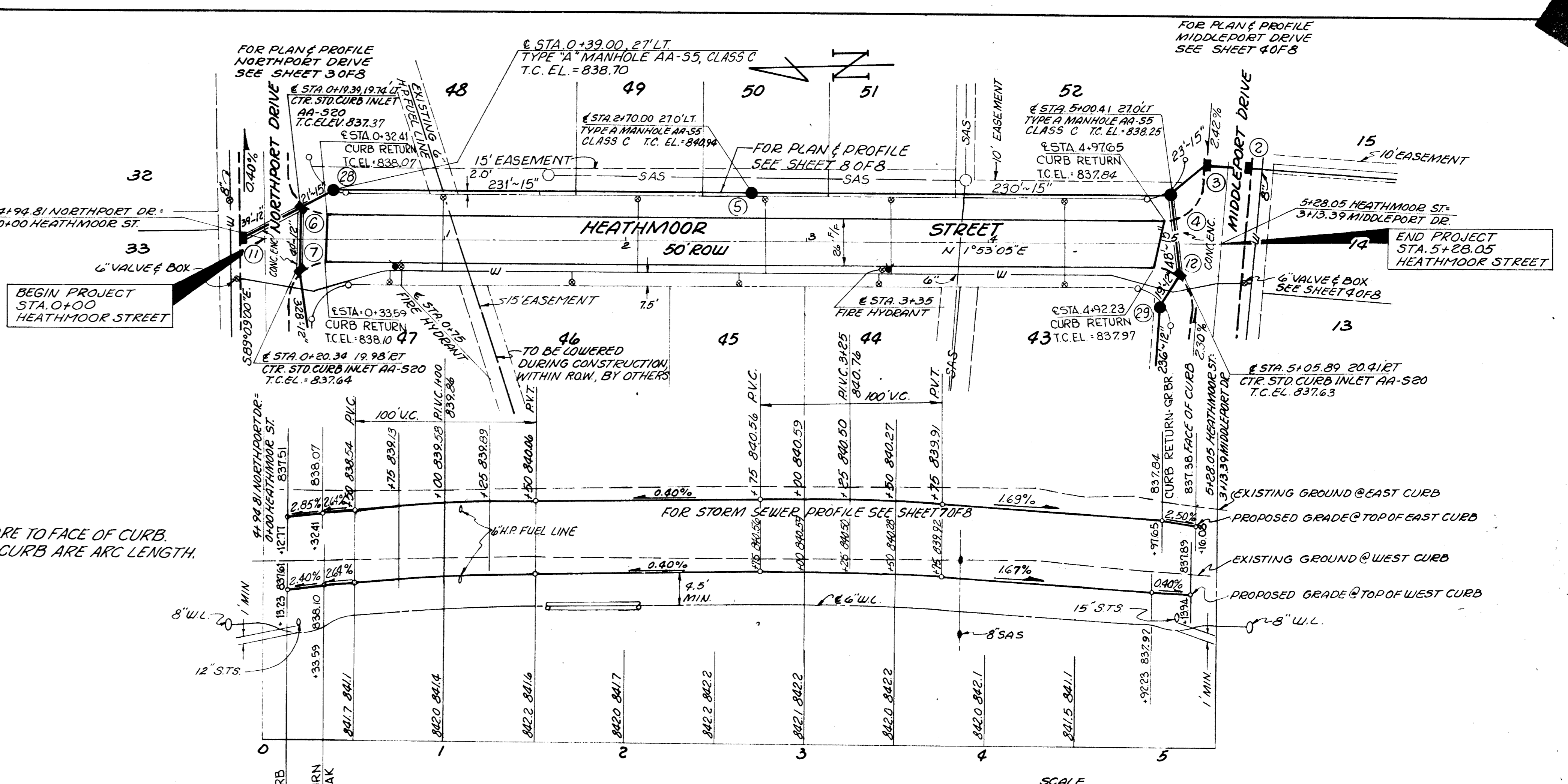
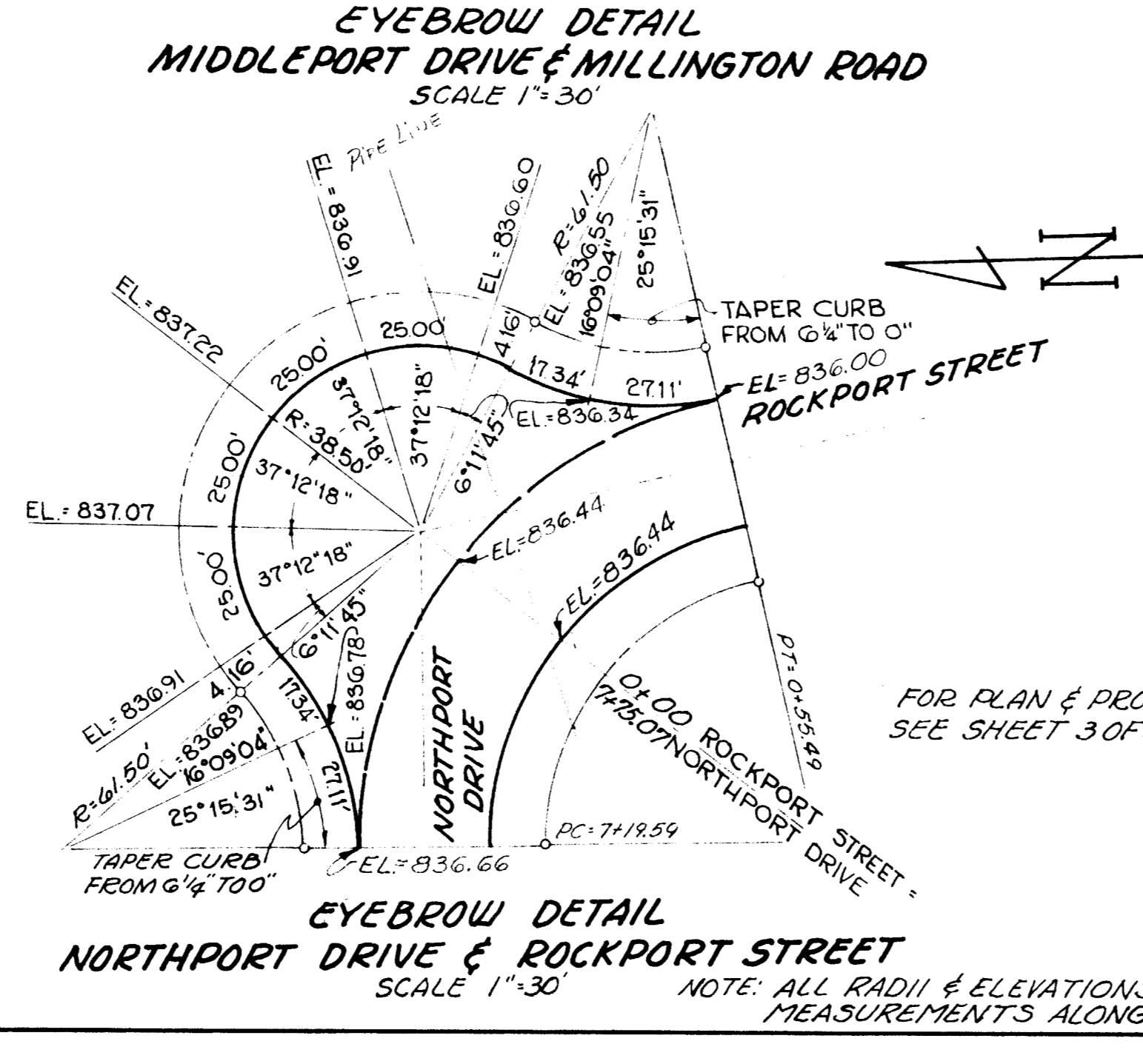
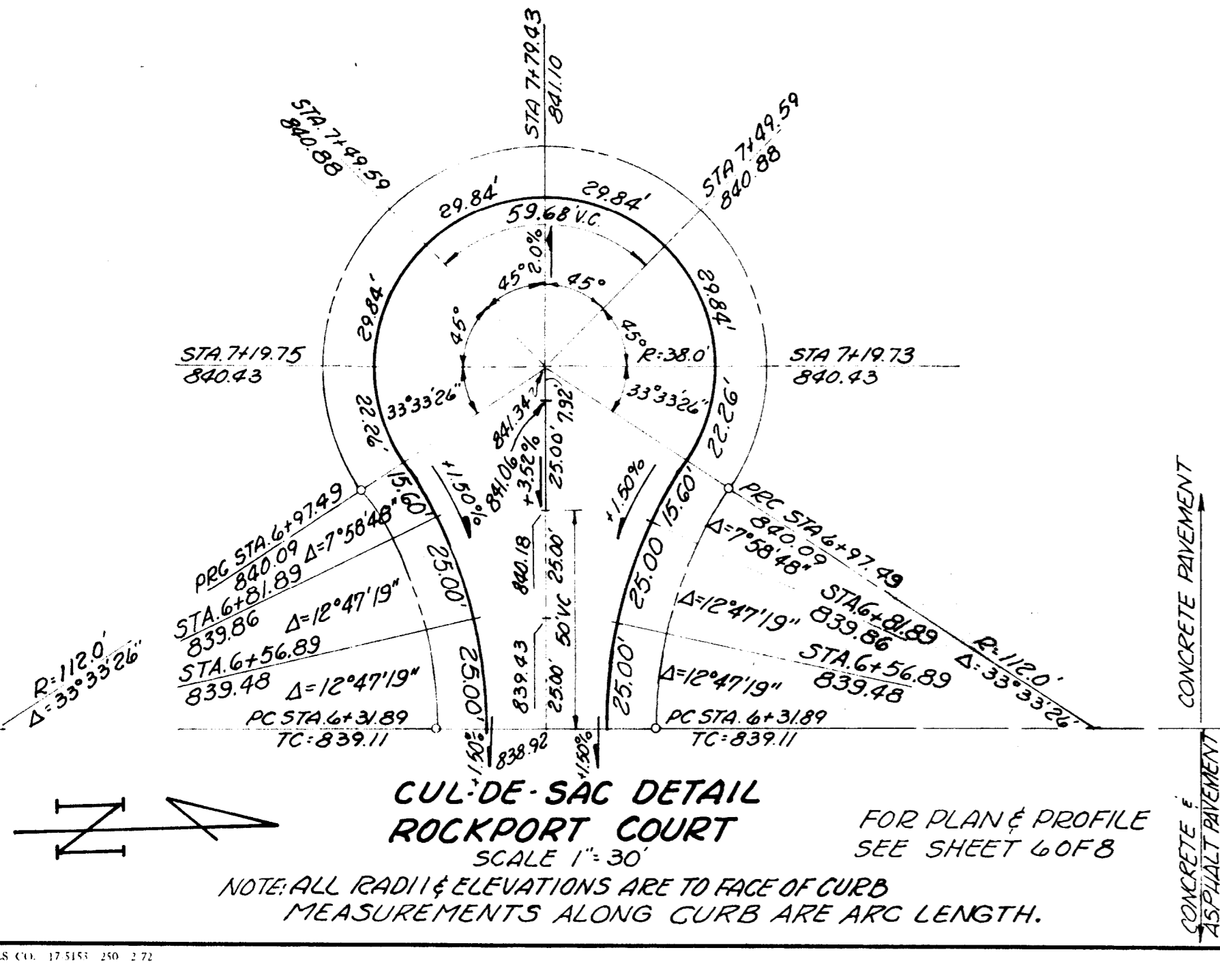
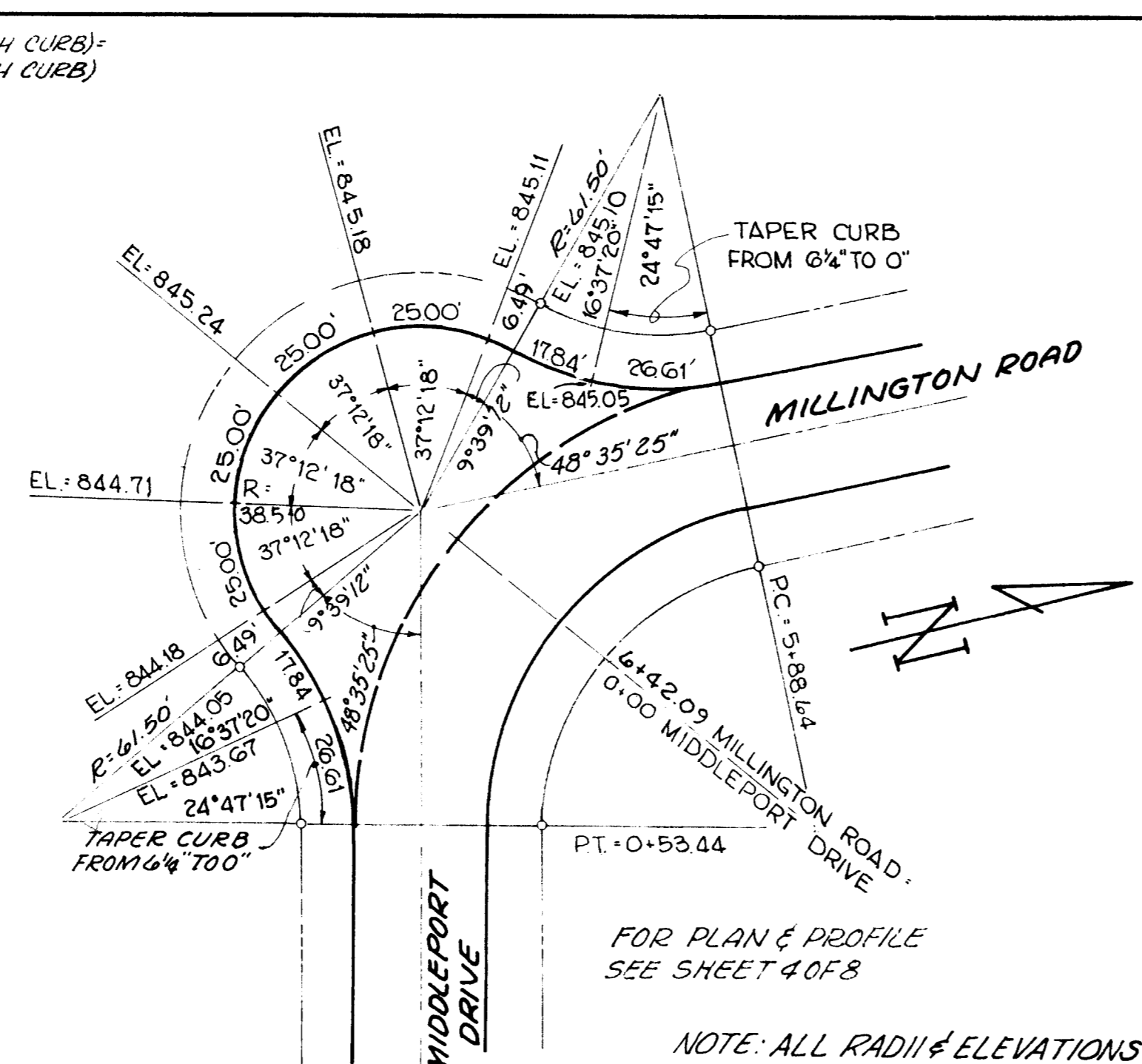
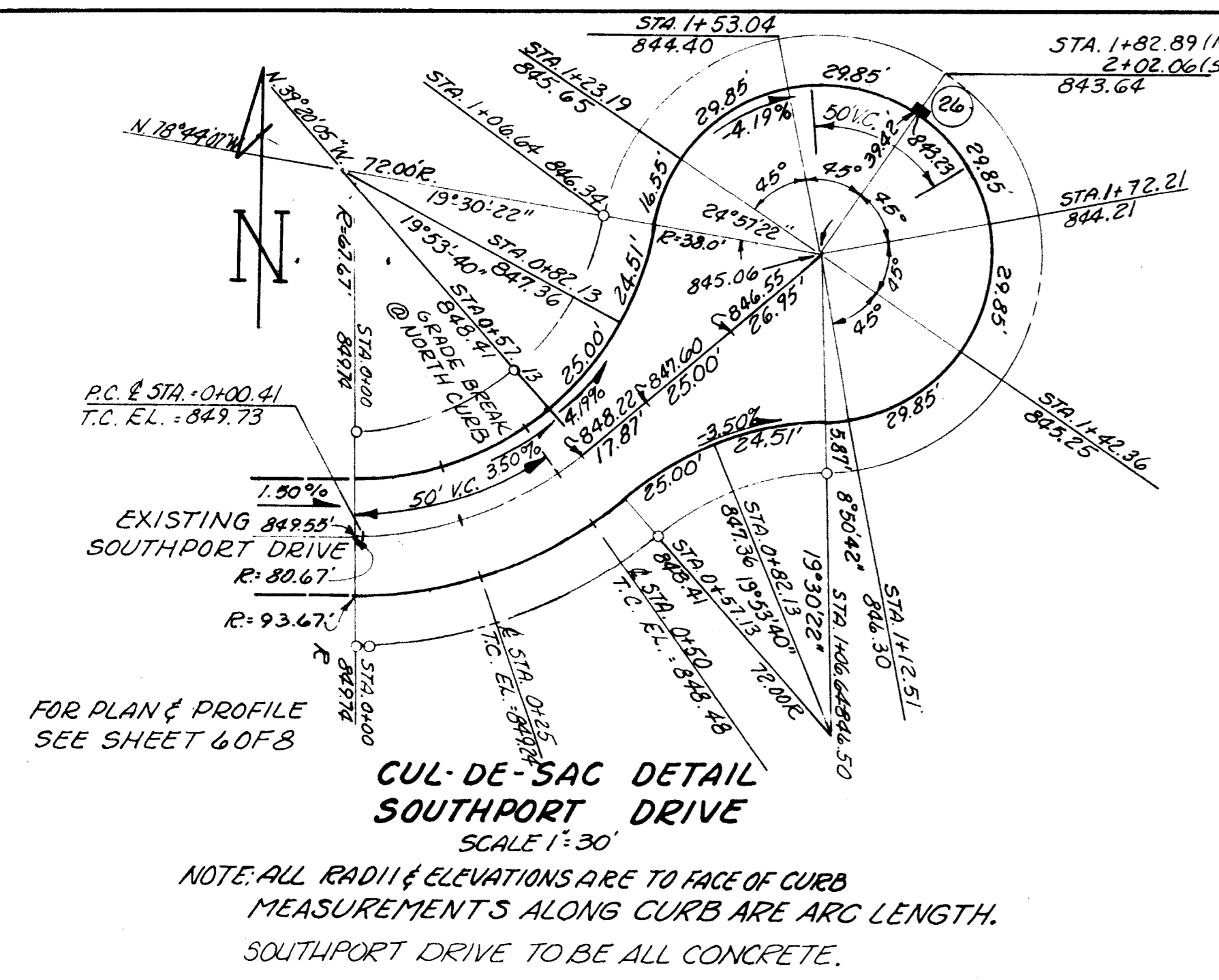
SCALE  
HORIZ. 1"=40' VEET. 1"=10'

CITY OF COLUMBUS, OHIO  
DEPARTMENT OF PUBLIC SERVICE  
DIVISION OF ENGINEERING AND CONSTRUCTION

PLAN FOR IMPROVEMENT OF  
MILLINGTON ROAD  
FROM MIDDLEPORT DRIVE TO A POINT 138.12'±  
SOUTH OF PEPPERELL DRIVE  
AND  
MIDDLEPORT DRIVE  
FROM MILLINGTON ROAD TO ROCKPORT STREET

FB PAGE \_\_\_\_\_ P.B. PAGE \_\_\_\_\_ C.P. \_\_\_\_\_  
DRAWN BY \_\_\_\_\_ CHECKED BY \_\_\_\_\_

2609 Dr. D



CITY OF COLUMBUS OHIO  
DEPARTMENT OF PUBLIC SERVICE  
DIVISION OF ENGINEERING AND CONSTRUCTION

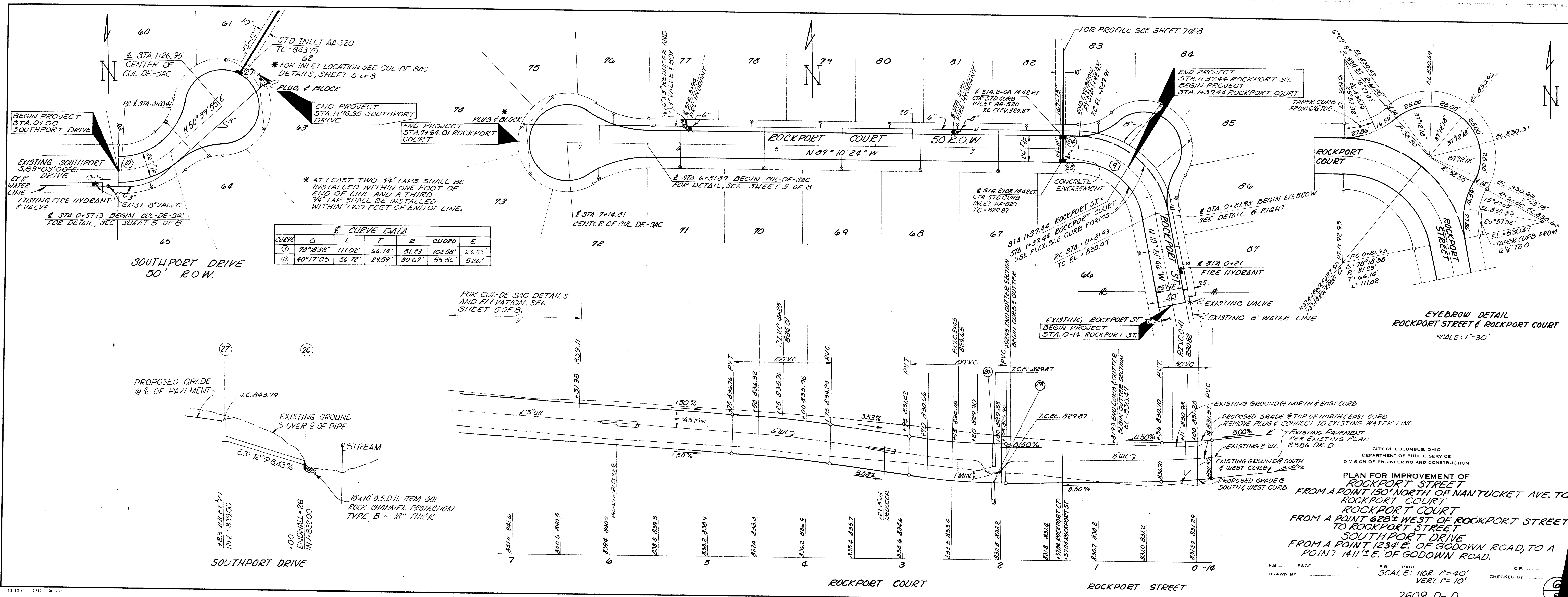
**PLAN FOR IMPROVEMENT OF  
HEATHMOOR STREET**  
FROM  
NORTHPORT DRIVE TO MIDDLEPORT DRIVE

FB PAGE \_\_\_\_\_ P.B. PAGE \_\_\_\_\_ C.P. \_\_\_\_\_  
DRAWN BY \_\_\_\_\_ CHECKED BY \_\_\_\_\_

2609 Dr. D

5  
8

PRINTED APR 13 '73

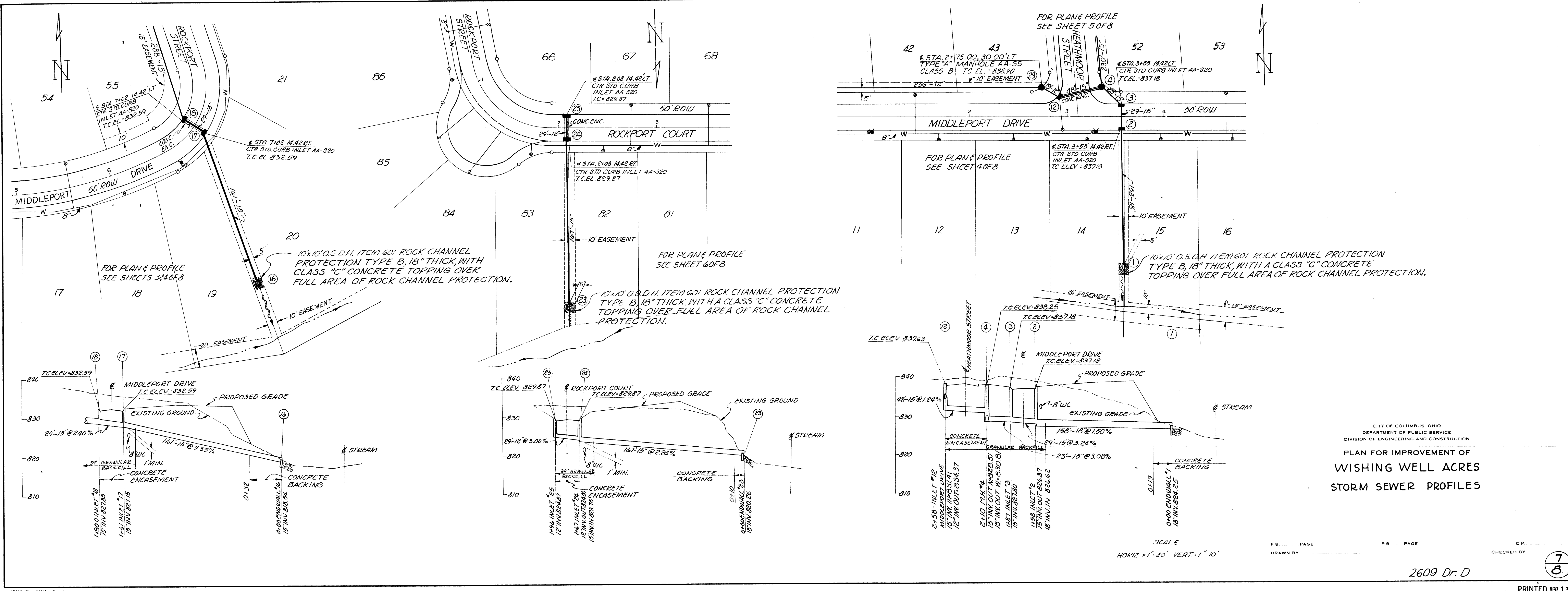


\* AT LEAST TWO 3/4" TAPS SHALL BE INSTALLED WITHIN ONE FOOT OF END OF LINE AND A THIRD 3/4" TAP SHALL BE INSTALLED WITHIN TWO FEET OF END OF LINE.

CURVE	Δ	L	T	R	CURVED	E
①	78°19'38"	1110.2'	64.14'	51.53'	102.58'	23.52'
②	40°17'05"	56.72'	29.59'	20.67'	55.54'	5.26'

CITY OF COLUMBUS, OHIO  
 DEPARTMENT OF PUBLIC SERVICE  
 DIVISION OF ENGINEERING AND CONSTRUCTION  
 PLAN FOR IMPROVEMENT OF  
**ROCKPORT STREET**  
 FROM A POINT 150' NORTH OF NANTUCKET AVE. TO  
 ROCKPORT COURT  
 FROM A POINT 628' WEST OF ROCKPORT STREET  
 TO ROCKPORT STREET  
 SOUTHPORT DRIVE  
 FROM A POINT 123' E. OF GODOWN ROAD, TO A  
 POINT 141' E. OF GODOWN ROAD.

DRAWN BY: \_\_\_\_\_ PAGE: \_\_\_\_\_  
 SCALE: HOR. 1" = 40'  
 VERT. 1" = 10'  
 CHECKED BY: \_\_\_\_\_  
 2609 Dr. D  
 PRINTED APR 13

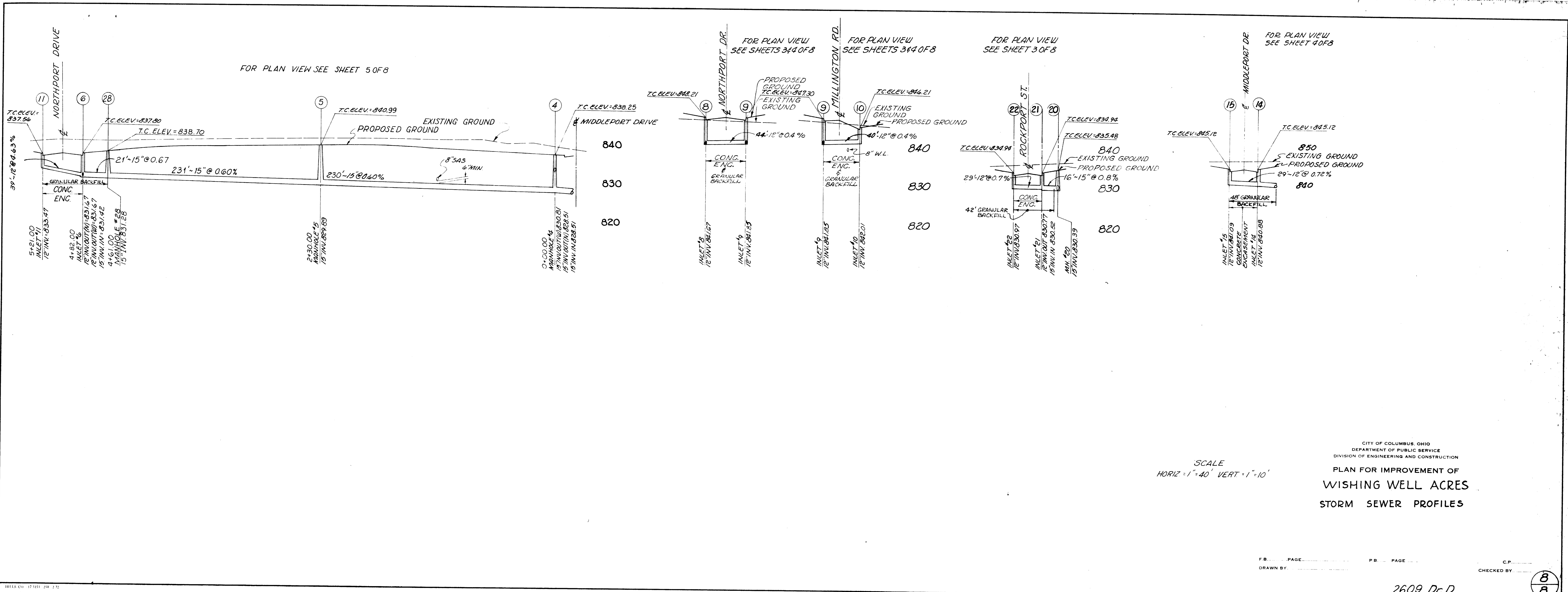


CITY OF COLUMBUS OHIO  
 DEPARTMENT OF PUBLIC SERVICE  
 DIVISION OF ENGINEERING AND CONSTRUCTION  
**PLAN FOR IMPROVEMENT OF  
 WISHING WELLS ACRES  
 STORM SEWER PROFILES**

SCALE  
 HORIZ - 1" = 40' VERT - 1" = 10'

FB PAGE \_\_\_\_\_ PB PAGE \_\_\_\_\_ CP \_\_\_\_\_  
 DRAWN BY \_\_\_\_\_ CHECKED BY \_\_\_\_\_

2609 Dr. D



SCALE  
 HORIZ = 1" = 40' VERT = 1" = 10'

CITY OF COLUMBUS, OHIO  
 DEPARTMENT OF PUBLIC SERVICE  
 DIVISION OF ENGINEERING AND CONSTRUCTION  
 PLAN FOR IMPROVEMENT OF  
 WISHING WELL ACRES  
 STORM SEWER PROFILES

FB PAGE \_\_\_\_\_ P.B. PAGE \_\_\_\_\_ C.P. \_\_\_\_\_  
 DRAWN BY \_\_\_\_\_ CHECKED BY \_\_\_\_\_

2609 Dr. D

PRINTED APR 13 '78

8  
8