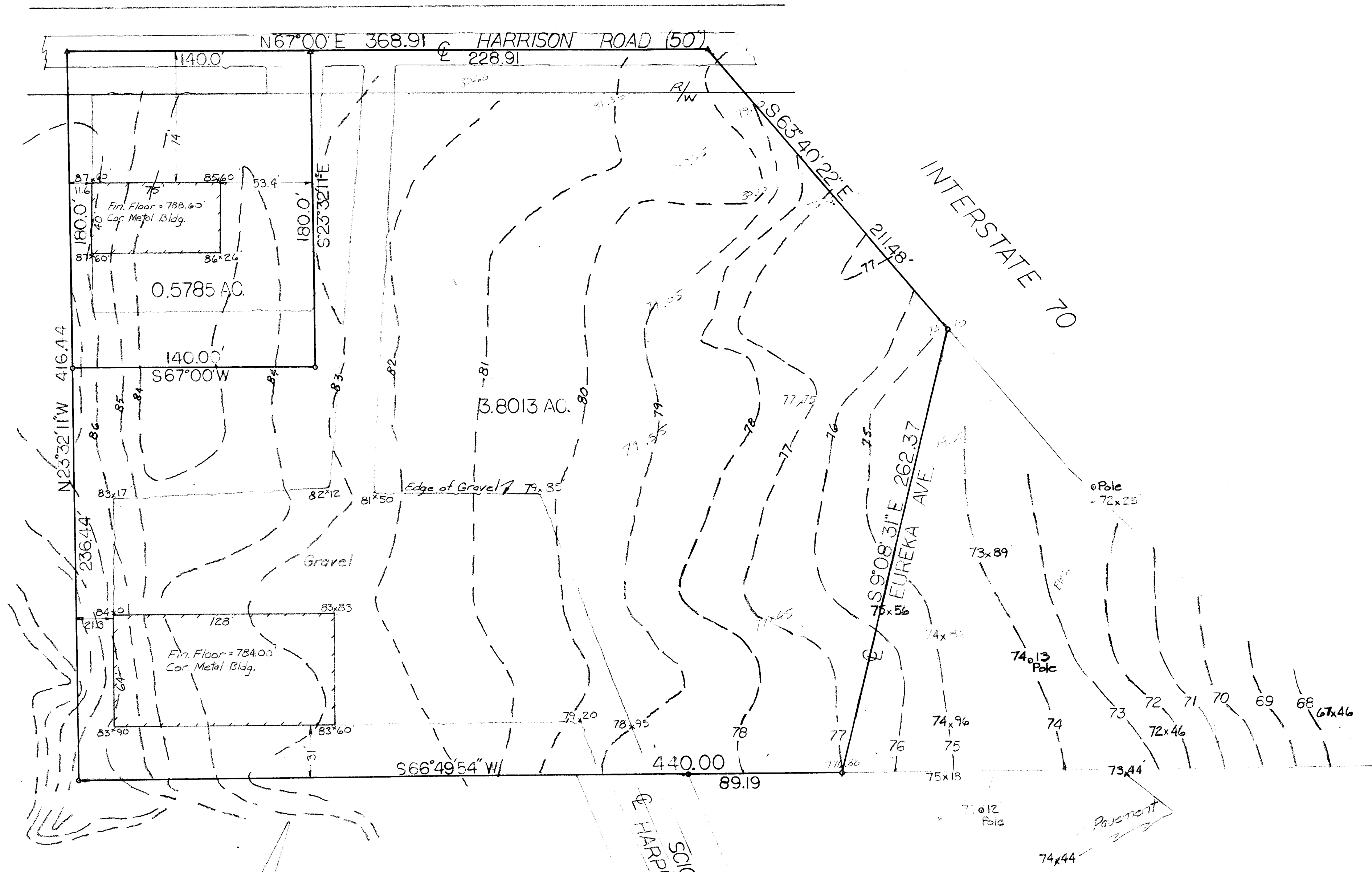


Fire Hydr. N. Side Harrison
 Rd. North bolt - Top flange
 Elev. 788.12.



BASIS FOR BEARINGS
 IS PLAT BOOK 49 PAGE 33
 HARRISON ROAD
 INDUSTRIAL PARK

PLAT SHOWING SURVEY OF 0.5785 AC. AND
 3.8013 AC. ORIGINALLY 4.69 AC. CONVEYED TO
 THOMAS R. SABATINGO OFFICAL REG. 10763 J10
 FRANKLIN COUNTY RECORDER'S OFFICE.
 SCALE 1"=40' DEC. 7, 1990

HARRY L. GREENE REG. SURVEYOR NO. 4058