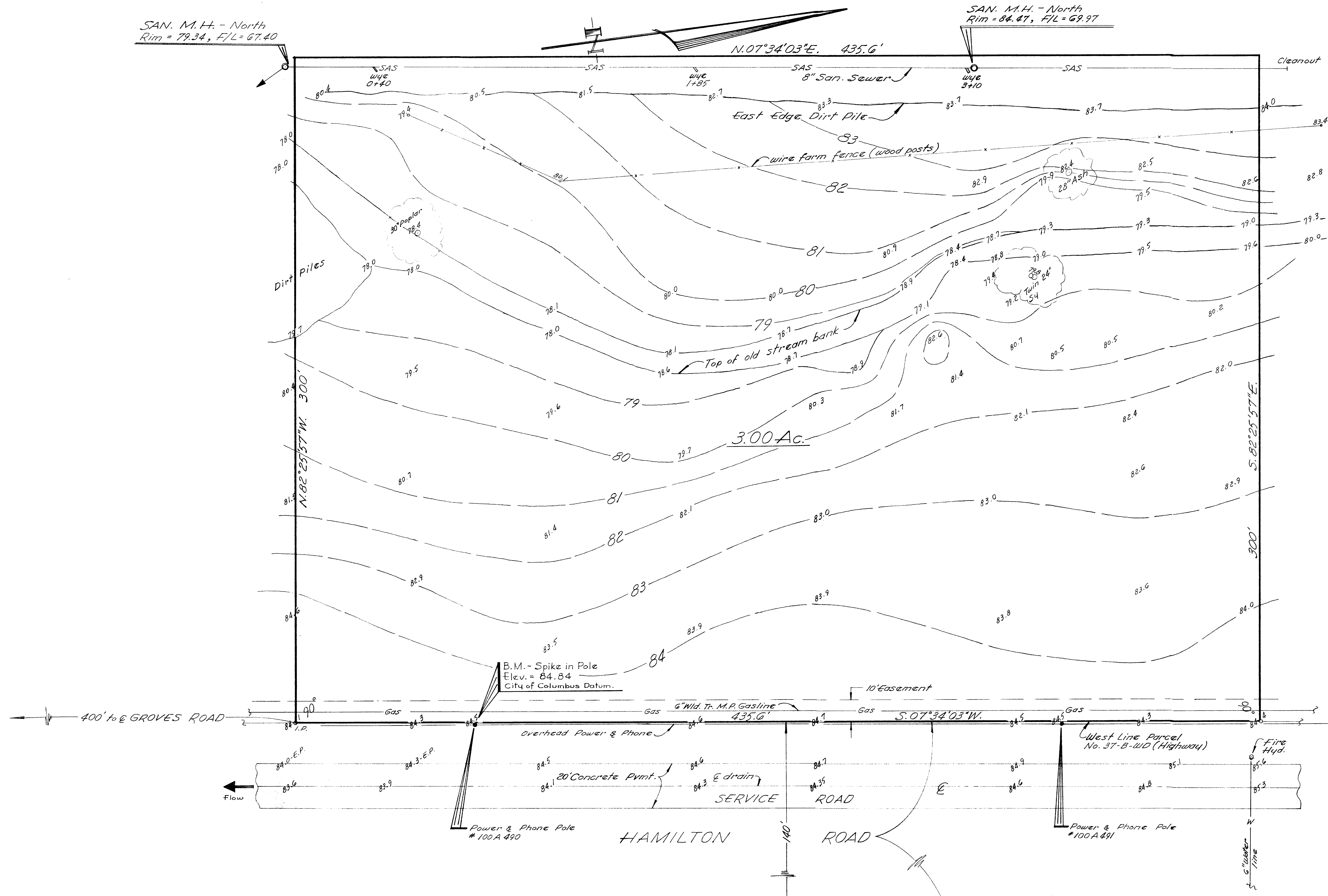


SAN. M.H. - North
Rim = 79.34, F/L = 67.40

SAN. M.H. - North
Rim = 84.47, F/L = 69.97



TOPO MAP showing a 3.00 Ac. Tract, City of Columbus, Ohio, being part of The Farm Bureau Cooperative Association, Inc. lands, as shown of record in D.B. 1269, Pg. 196, Recorder's Office, Franklin County, Ohio.

for
 — Mr. Vince K. Oliver —

Harry L. Greene
 Harry L. Greene, Reg. Surveyor - No. 4058.

Feb. 19, 1971
 Scale 1" = 20'

