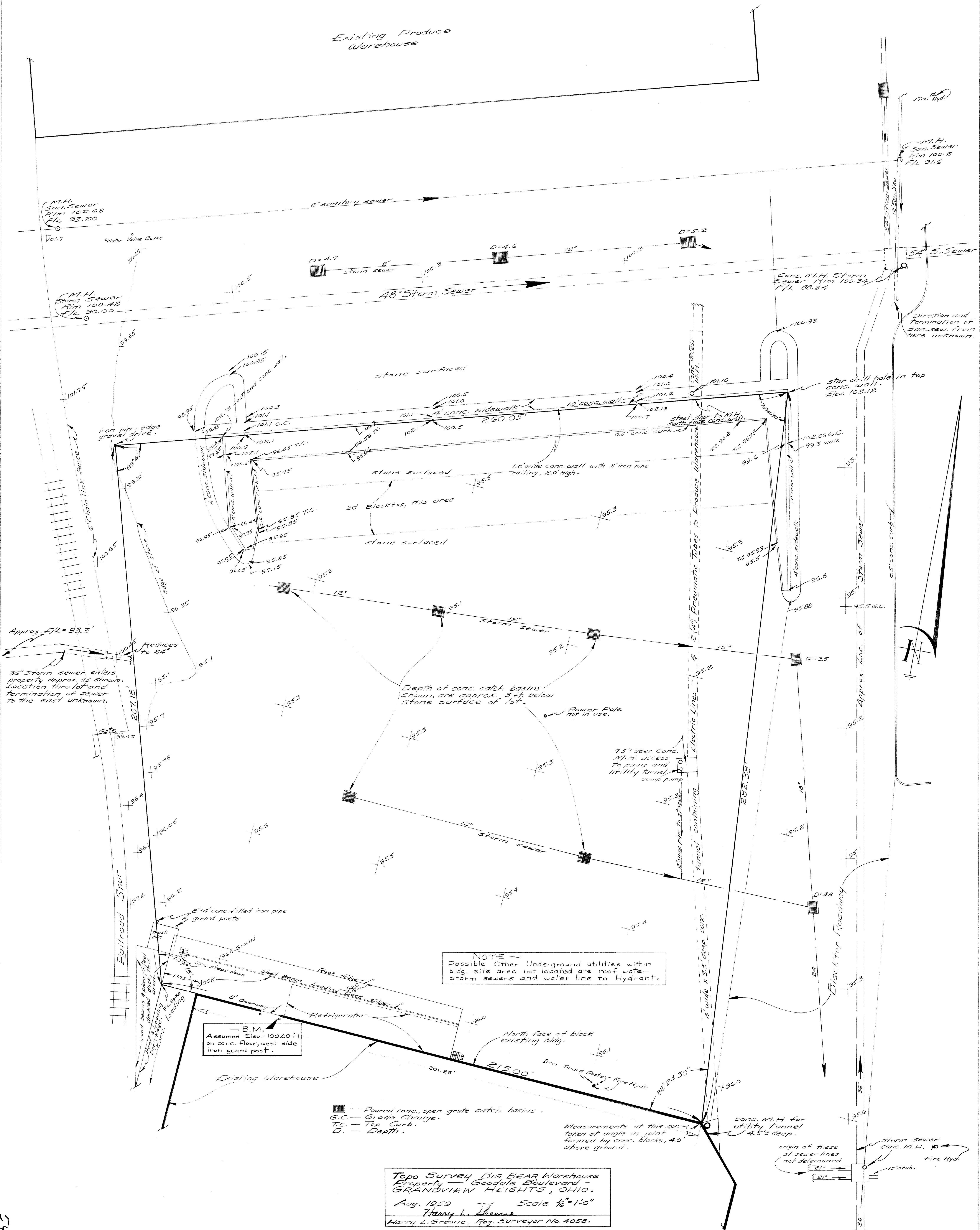


Existing Produce Warehouse



M.H. San. Sewer  
Rim 102.68  
F/L 93.20

M.H. Storm Sewer  
Rim 100.48  
F/L 90.00

M.H. San. Sewer  
Rim 100.2  
F/L 91.6

Conc. M.H. Storm Sewer  
Rim 100.34  
F/L 98.34

Direction and Termination of San. Sewer from here unknown.

Approx. F/L = 93.3'

36" Storm sewer enters property approx. as shown. Location thru lot and termination of sewer to the east unknown.

Depth of conc. catch basins shown, are approx. 3 ft. below stone surface of lot.

Power Pole not in use.

7.5' Deep Conc. M.H. access to pump and utility tunnel sump pump

NOTE - Possible Other underground utilities within bldg. site area not located are roof water storm sewers and water line to Hydrant.

- B.M. Assumed Elev. 100.00 ft on conc. floor, west side iron guard post.

Measurements of this construction taken at angle in joint formed by conc. blocks, 40' above ground.

origins of these st. sewer lines not determined

- Floured conc., open grate catch basins.
- G.C. - Grade Change.
- T.C. - Top Curb.
- D. - Depth.

Topo Survey BIG BEAR Warehouse  
Property - Goodale Boulevard -  
GRANDVIEW HEIGHTS, OHIO.  
Aug. 1959 Scale 1/8" = 1'-0"  
Harry L. Greene  
Harry L. Greene, Reg. Surveyor No. 4058.