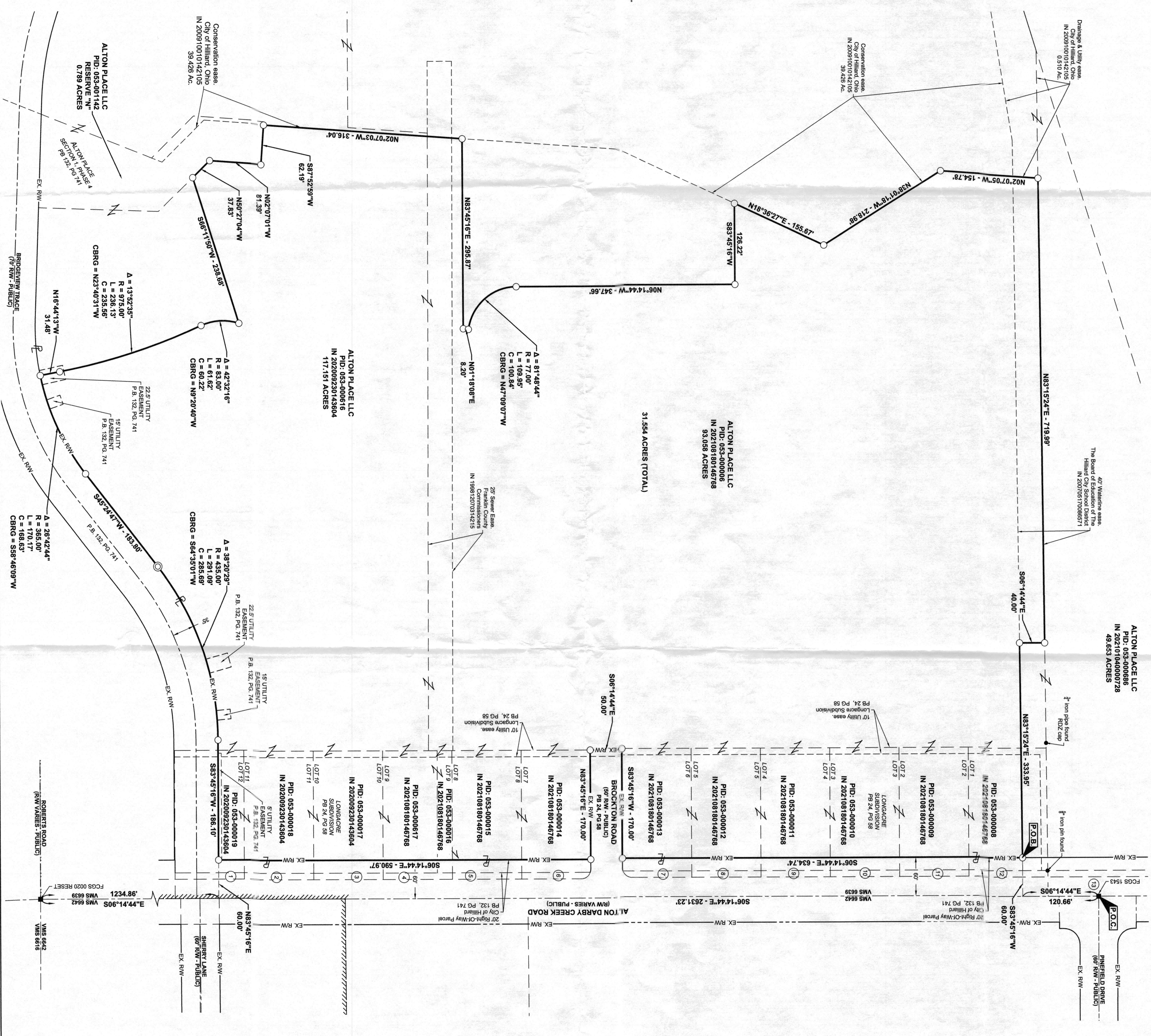


- LINE TYPE LEGEND**
- Lot Split Boundary
 - Existing Easement
 - Centerline RW
 - Historic Lot Line
 - Property Line
 - Corporation Line
 - EX. RW
 - R/W

- MONUMENT LEGEND**
- MAG SPIKE SET
 - 3"x3" REBAR SET OR PREVIOUSLY SET WITH CAP YAS - FRM 1648"
 - PERMANENT MONUMENT PREVIOUSLY SET (1"x3" REBAR)
 - MONUMENT BOX FOUND (SEE PLAT NOTES)
 - IRON PIPE/PIPE FOUND (SEE PLAT NOTES)

- Franklin County Commissioners
N 1988120703 4228
0.025 Acres
- Franklin County Commissioners
N 1988120703 4229
0.025 Acres
- Franklin County Commissioners
N 19881112028577
0.025 Acres
- Franklin County Commissioners
N 1988120703 4222
0.025 Acres
- Franklin County Commissioners
N 1988120703 4221
0.025 Acres
- Franklin County Commissioners
N 1988120703 4219
0.025 Acres
- Franklin County Commissioners
N 1988120703 4217
0.025 Acres
- Franklin County Commissioners
N 1988120703 4223
0.025 Acres
- Franklin County Commissioners
N 1988120703 4224
0.025 Acres
- Franklin County Commissioners
N 1988120703 4225
0.025 Acres
- Franklin County Commissioners
N 1988120703 4222
0.025 Acres
- Franklin County Commissioners
N 1988120703 4223
0.025 Acres
- Franklin County Commissioners
N 1988120703 4224
0.025 Acres
- Franklin County Commissioners
N 1988120703 4225
0.025 Acres
- Franklin County Commissioners
N 1988120703 4222
0.025 Acres
- Franklin County Commissioners
N 1988120703 4223
0.025 Acres
- Franklin County Commissioners
N 1988120703 4224
0.025 Acres
- Franklin County Commissioners
N 1988120703 4225
0.025 Acres



LOT SPLIT SURVEY PLAT

STATE OF OHIO, COUNTY OF FRANKLIN, BROWN TOWNSHIP, CITY OF HILLIARD, VIRGINIA MILITARY SURVEY NO. 6639

GENERAL PROPERTY INFORMATION

Owners of Record: Alton Place LLC

Current Tax Plots: 053-000006, 053-000016, 053-000008, 053-000009, 053-000008, 053-000011, 053-000012, 053-000013, 053-000014, 053-000015, 053-000016, 053-000006, 053-000017, 053-000018, 053-000019.

Current Tax District: City of Hilliard

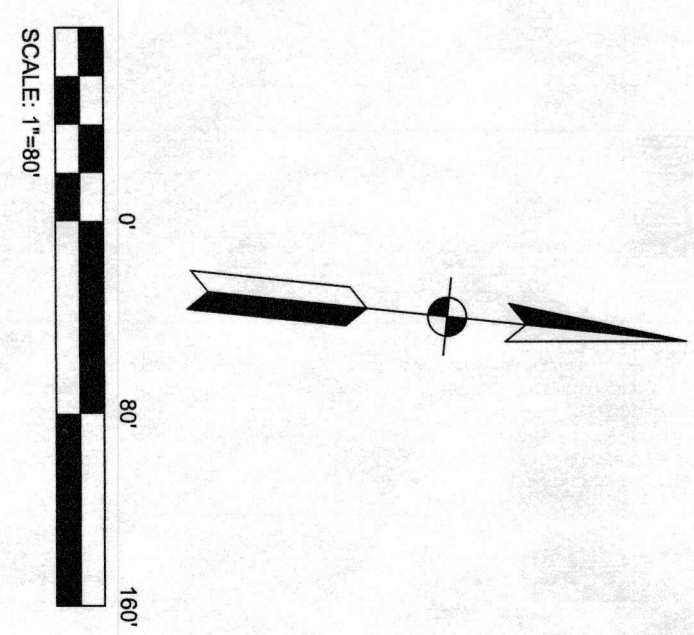
Current Deed Reference: Instrument Number 202108180146768 and Instrument Number 202009230145604

Current Site Address: 2957 Alton Dary Creek Road, Hilliard, OH 43026

ACREAGE	PARCEL	PID
17.632 AC	PID 053-000006	
9.143 AC	PID 053-000016	
0.329 AC	PID 053-000008	
0.429 AC	PID 053-000009	
0.429 AC	PID 053-000010	
0.429 AC	PID 053-000011	
0.429 AC	PID 053-000012	
0.429 AC	PID 053-000013	
0.429 AC	PID 053-000014	
0.429 AC	PID 053-000015	
0.397 AC	PID 053-000017	
0.429 AC	PID 053-000017	
0.429 AC	PID 053-000018	
0.160 AC	PID 053-000019	

PRELIMINARY APPROVAL
 ADAM W. FOWLER, P.E., P.S.
 01/21/2026 8:55:18 AM
 FINDING ORIGINALS
 Approved, No Plat Required
 City of Hilliard
 City Engineer
 Date: 1/21/2026

RECEIVED
 MAY 01 2025
 FRANKLIN COUNTY ENGINEER
 ADAM W. FOWLER, P.E., P.S.

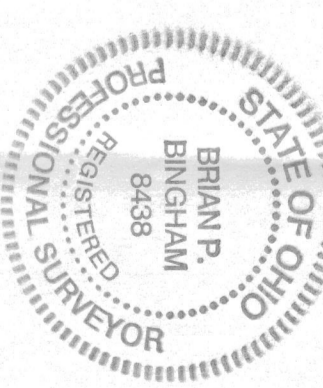


FLOOD NOTE

The accuracy of any flood hazard data shown on this survey is subject to map scale uncertainty and to any other uncertainty in location or elevation on the referenced Flood Insurance Rate Map. Flood Insurance Rate Maps having Community-Fpanel Number 39454501N34 (effective date 08/12/2009) in Zone "AE" (100-year floodplain), Zone "X" (500-year floodplain), and Zone "X" (outside floodplain).

BASIS OF BEARINGS

Bearings described herein are based on North 08 degrees 14 minutes 44 seconds West from the centerline of right-of-way of Alton Dary Creek Road, measured from Grid North, referenced to the Ohio State Plane Coordinate System (South Zone) and the North American Datum of 1983 (2011 Adjustment) (EPOCH:2010.0000), as established utilizing a GPS survey and a NGS OPUS solution.



This lot split plat was prepared based on an actual field survey of the premises performed in July 2019 by American Structural, Inc., and is the only contract to use Brian Bincham's knowledge and skill.

Brian P. Bincham
 Professional Land Surveyor #8438