



Evans, Mechwart, Hambleton & Tilton, Inc.
 Engineers • Surveyors • Planners • Scientists
 5500 New Albany Road, Columbus, OH 43054
 Phone: 614.775.4500 Toll Free: 888.775.3648
 emht.com

SURVEY OF ACREAGE PARCEL

SURVEY NUMBER 2542
 VIRGINIA MILITARY DISTRICT

CITY OF DUBLIN, COUNTY OF FRANKLIN, STATE OF OHIO

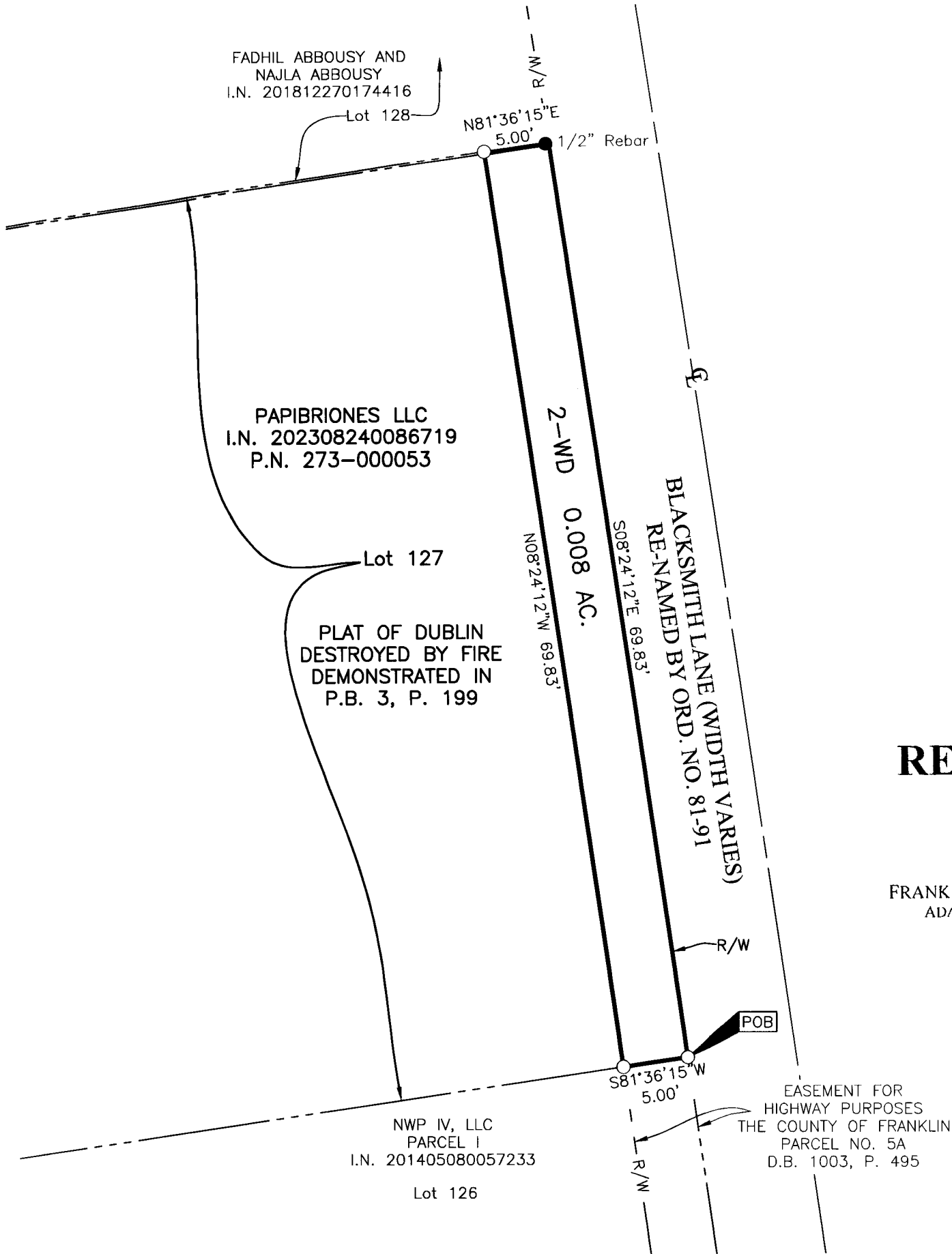
Date: September 12, 2025

Scale: 1" = 10'

Job No: 2024-0344

Sheet No:

1 of 1



RECEIVED

MAR 18 2025

FRANKLIN COUNTY ENGINEER
 ADAM W. FOWLER, P.E., P.S.

BASIS OF BEARINGS:

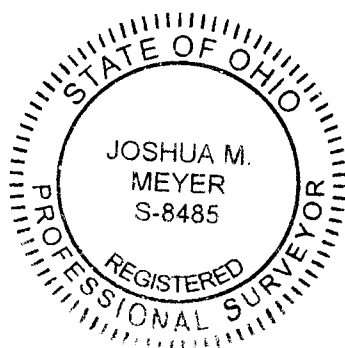
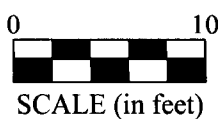
The Bearings shown hereon are based on the Ohio State Plane Coordinate System South Zone as per NAD83 (1986 Adjustment). Control for bearings was from coordinates of monuments FRANK 73 and FRANK 74, having a bearing of South 73° 57' 18" East, established by the Franklin County Engineering Department.

SURVEY NOTE:

This survey was prepared using documents of record, prior plats of survey, and observed evidence located by an actual field survey performed between 2013 and 2024.

- Iron Pin Set
- Iron Pin Found
- Stone Found
- P.K. Nail Found
- Monument Found
- Magnetic Nail Set
- Magnetic Nail Found
- ▲ Railroad Spike Found

Iron Pins Set are 13/16" I.D. iron pipes 30" long with cap inscribed EMHT INC.



By *Joshua M. Meyer*
 Joshua M. Meyer
 Professional Surveyor No. 8485
 jmeyer@emht.com

9-12-2025
 Date

J:\20240344\Dwg\04Sheets\Boundary\2WD-20240344-VS-BNDY.dwg plotted by Goodheart, Owen on 9/12/2025 3:19:55 PM last saved by ogoodheart on 9/12/2025 11:01:49 AM