



Evans, Mechwart, Hambleton & Tilton, Inc.
 Engineers • Surveyors • Planners • Scientists
 5500 New Albany Road, Columbus, OH 43054
 Phone: 614.775.4500 Toll Free: 888.775.3648
 emht.com

SURVEY OF ACREAGE PARCEL

SECTION 6, TOWNSHIP 16, RANGE 20

REFUGEE LANDS

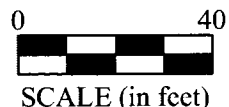
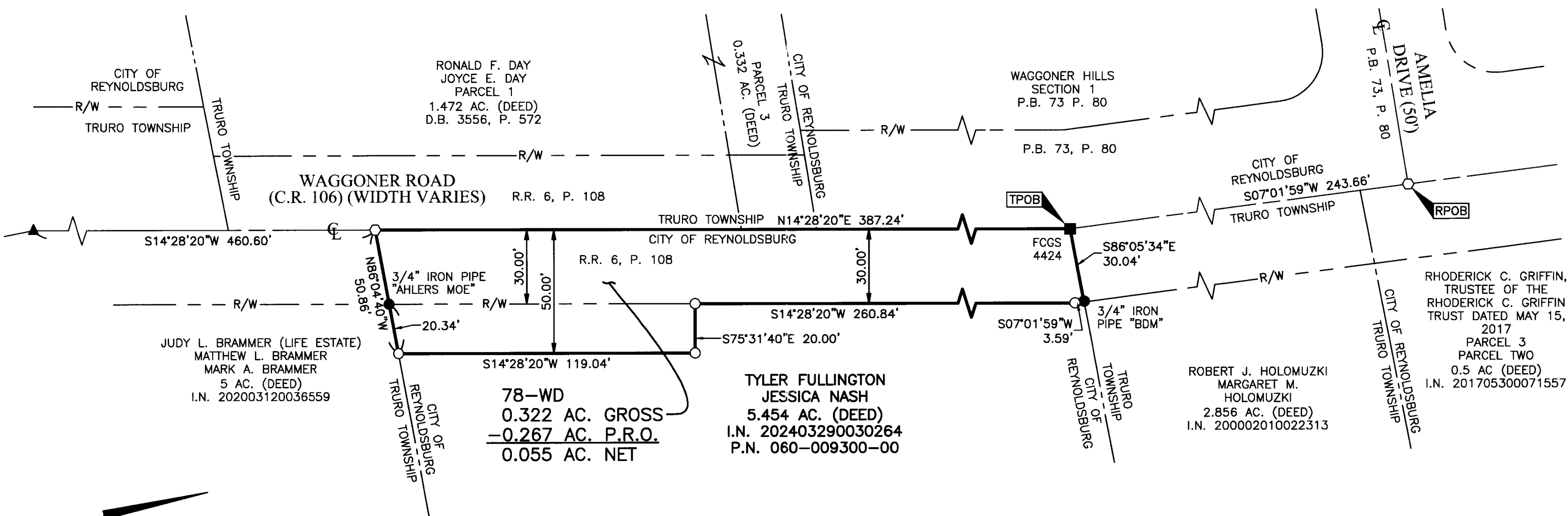
CITY OF REYNOLDSBURG, COUNTY OF FRANKLIN, STATE OF OHIO

Date: February 3, 2025

Scale: 1" = 40'

Job No: 2021-1337

Sheet No: 1 of 1



PRELIMINARY APPROVAL

ADAM W. FOWLER, P.E., P.S.

jwiggins

02/07/2025 10:15:01 AM

PENDING ORIGINALS

*Submitted via digital format

Please return this approval, along with the original description and plat of survey, as prepared by the surveyor, signed, sealed, and dated in blue ink.



BASIS OF BEARINGS:

The Bearings shown hereon are based on the Ohio State Plane Coordinate System South Zone as per NAD83 (NSRS2007). Control for bearings was from coordinates of monuments GLENREST and FRANK48, having a bearing of North 08° 32' 44" East, established by the Franklin County Engineering Department, using G.N.S.S. procedures and equipment.

REFERENCE:

- Road Record 6, Page 108 and Roadway Plan titled "Waggoner Road 1937" on file with the Franklin County Engineer.
- Deeds and Plats of record shown hereon are on file with the Franklin County Recorder.

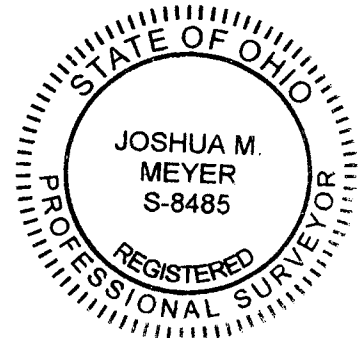
SURVEY NOTE:

This survey was prepared using documents of record, prior plats of survey, and observed evidence located by an actual field survey performed in 2022 and 2023.

RECEIVED

MAR 18 2026

FRANKLIN COUNTY ENGINEER
ADAM W. FOWLER, P.E., P.S.



By *Joshua M. Meyer*

Joshua M. Meyer
Professional Surveyor No. 8485
jmeyer@emht.com

2-3-2025

Date

Iron Pins Set are 13/16" I.D. iron pipes
30" long with cap inscribed EMHT INC.