



Evans, Mechwart, Hambleton & Tilton, Inc.  
 Engineers • Surveyors • Planners • Scientists  
 5500 New Albany Road, Columbus, OH 43054  
 Phone: 614.775.4500 Toll Free: 888.775.3648  
 emht.com

# SURVEY OF ACREAGE PARCEL

SECTION 6, TOWNSHIP 16, RANGE 20

REFUGEE LANDS

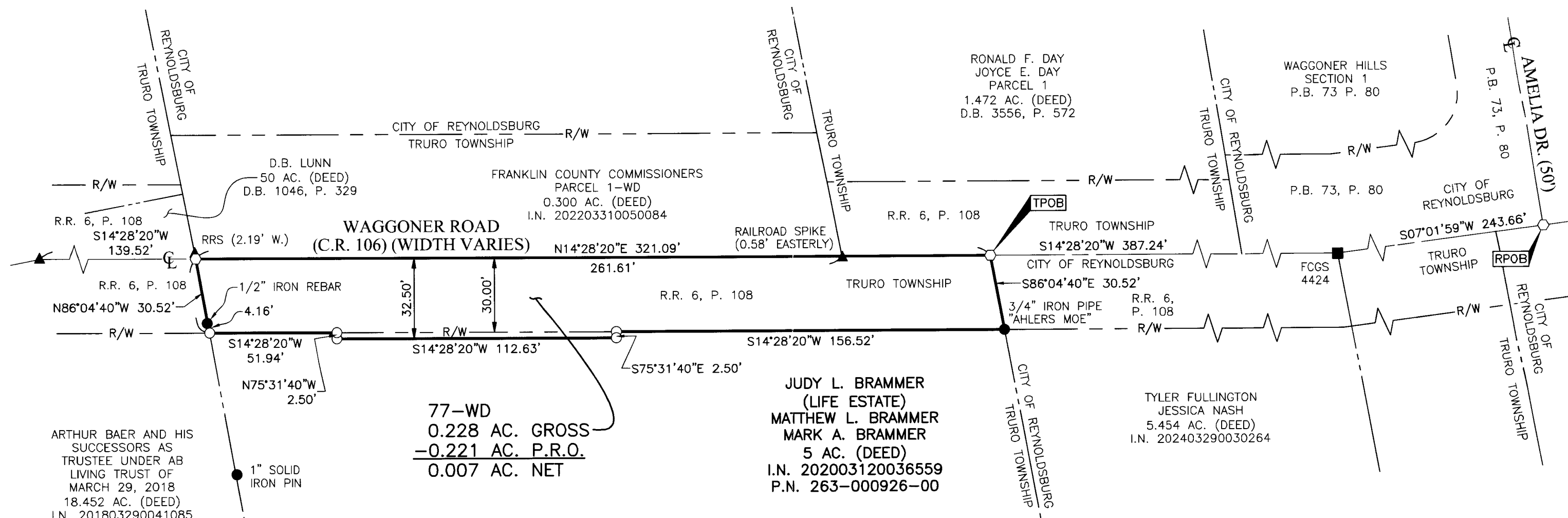
TOWNSHIP OF TRURO, COUNTY OF FRANKLIN, STATE OF OHIO

Date: February 25, 2025

Scale: 1" = 40'

Job No: 2021-1337

Sheet No: 1 of 1



77-WD  
 0.228 AC. GROSS  
 -0.221 AC. P.R.O.  
 0.007 AC. NET

**PRELIMINARY APPROVAL**

ADAM W. FOWLER, P.E., P.S.

jwiggins

02/27/2025 8:39:29 AM

PENDING ORIGINALS

\*Submitted via digital format

Please return this approval, along with the original description and plat of survey, as prepared by the surveyor, signed, sealed, and dated in blue ink.

**SURVEY NOTE:**

This survey was prepared using documents of record, prior plats of survey, and observed evidence located by an actual field survey performed in 2022 and 2023.

**BASIS OF BEARINGS:**

The Bearings shown heron are based on the Ohio State Plane Coordinate System South Zone as per NAD83 (NSRS2007). Control for bearings was from coordinates of monuments GLENREST and FRANK48, having a bearing of North 08° 32' 44" East, established by the Franklin County Engineering Department, using G.N.S.S. procedures and equipment.

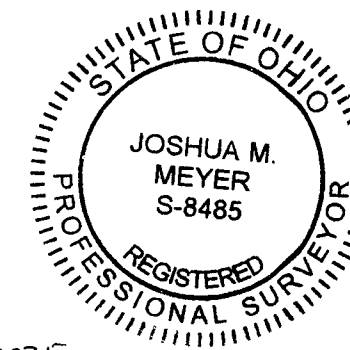
**REFERENCE:**

- Road Record 6, Page 108 and Roadway Plan titled "Waggoner Road 1937" on file with the Franklin County Engineer.
- Deeds and Plats of record shown hereon are on file with the Franklin County Recorder.

**RECEIVED**

MAR 18 2025

FRANKLIN COUNTY ENGINEER  
 ADAM W. FOWLER, P.E., P.S.

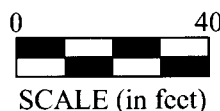


By *Joshua M. Meyer*  
 Joshua M. Meyer  
 Professional Surveyor No. 8485  
 jmeyer@emht.com

2-25-2025  
 Date

- Iron Pin Set
- Iron Pin Found
- ⦿ Stone Found
- ⬤ P.K. Nail Found
- Monument Found
- ◊ Magnetic Nail Set
- Magnetic Nail Found
- ▲ Railroad Spike Found

Iron Pins Set are 13/16" I.D. iron pipes  
 30" long with cap inscribed EMHT INC.



SCALE (in feet)