

SURVEY OF ACREAGE PARCELS

QUARTER TOWNSHIP 3, TOWNSHIP 2, RANGE 16

UNITED STATES MILITARY DISTRICT

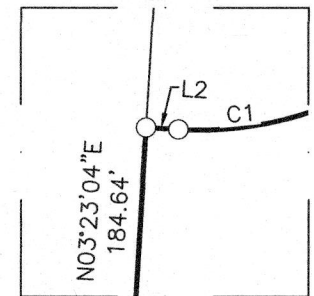
CITY OF COLUMBUS, COUNTY OF FRANKLIN, STATE OF OHIO

RECEIVED

MAR 03 2026

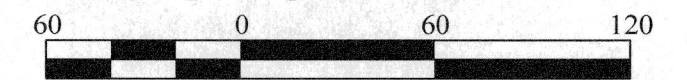
FRANKLIN COUNTY ENGINEER
ADAM W. FOWLER, P.E., P.S.

DETAIL A



- Iron Pin Set
- Iron Pin Found
- Stone Found
- P.K. Nail Found
- Monument Found
- Magnetic Nail Set
- Magnetic Nail Found
- ▲ Railroad Spike Found

Iron Pins Set are 13/16" I.D. iron pipes
30" long with cap inscribed EMHT INC.

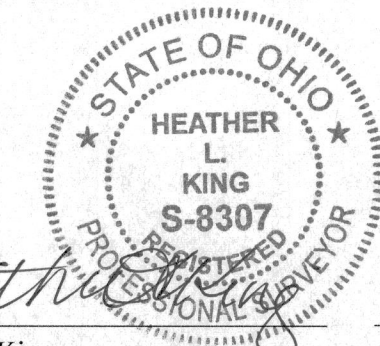


GRAPHIC SCALE (in feet)

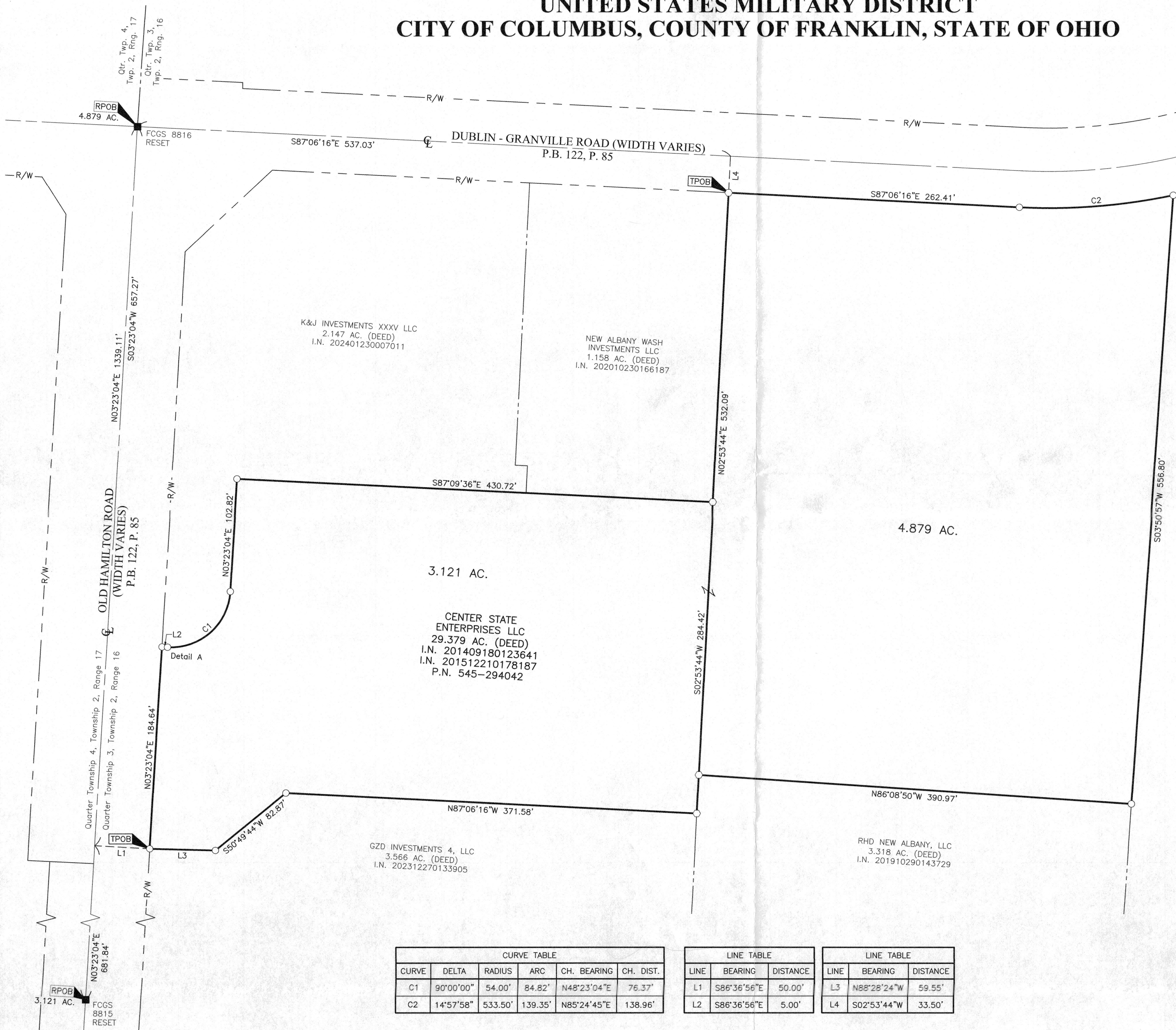
HAMILTON CROSSING LLC
44,294 AC. (DEED)
I.N. 201810290147105

BASIS OF BEARINGS:
Bearings are based on the Ohio State Plane Coordinate System, South Zone, as per NAD83 (2007 Adjustment). Control for bearings was from coordinates of monuments FCGS 8815 & FCGS 8816, having a bearing of North 03° 23' 04" East for a portion of the centerline of Hamilton Road (Relocated), established by the Franklin County Engineering Department, using Global Positioning System procedures and equipment.

SURVEY NOTE:
This survey was prepared using documents of record, prior plats of survey, and observed evidence located by an actual field survey in September 2014 and April 2020.



By Heather L. King Date 2/23/26
Heather L. King
Professional Surveyor No. 8307
hking@emht.com



CURVE TABLE					
CURVE	DELTA	RADIUS	ARC	CH. BEARING	CH. DIST.
C1	90°00'00"	54.00'	84.82'	N48°23'04"E	76.37'
C2	14°57'58"	533.50'	139.35'	N85°24'45"E	138.96'

LINE TABLE		
LINE	BEARING	DISTANCE
L1	S86°36'56"E	50.00'
L2	S86°36'56"E	5.00'

LINE TABLE		
LINE	BEARING	DISTANCE
L3	N88°28'24"W	59.55'
L4	S02°53'44"W	33.50'

<p>EMHT Evans, Mechwart, Hambleton & Tilton, Inc. Engineers • Surveyors • Planners • Scientists 5500 New Albany Road, Columbus, OH 43054 Phone: 614.775.4500 Toll Free: 888.775.3648 emht.com</p>	Date: February 11, 2026
	Scale: 1" = 60'
	Job No: 2026-0074
	Sheet: 1 of 1
REVISIONS	
MARK	DATE

I:\20260074\Drawings\04Sheets\Boundary\20260074-VS-BNDY-01.dwg plotted by King, Heather on 2/23/2026 10:21:35 AM last saved by hking on 2/23/2026 10:21:19 AM