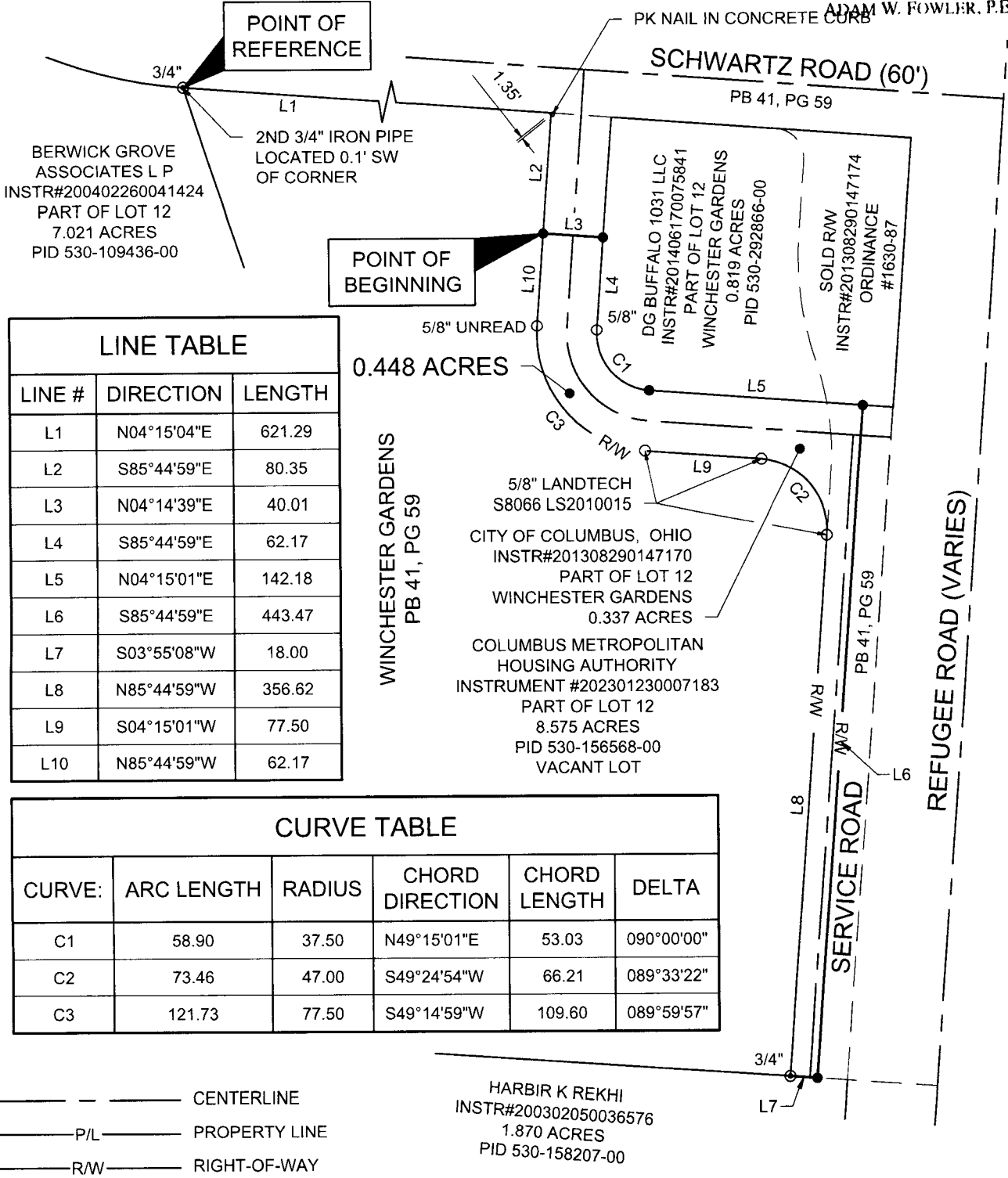
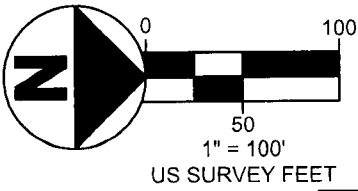


FEB 11 2026

FRANKLIN COUNTY ENGINEER  
ADAM W. FOWLER, P.E., P.S.

SECTION 5  
TOWNSHIP 11 N, RANGE 21 W  
CONGRESS LANDS EAST  
OF SCIOTO RIVER  
CITY OF COLUMBUS  
COUNTY OF FRANKLIN  
STATE OF OHIO



**LINE TABLE**

| LINE # | DIRECTION   | LENGTH |
|--------|-------------|--------|
| L1     | N04°15'04"E | 621.29 |
| L2     | S85°44'59"E | 80.35  |
| L3     | N04°14'39"E | 40.01  |
| L4     | S85°44'59"E | 62.17  |
| L5     | N04°15'01"E | 142.18 |
| L6     | S85°44'59"E | 443.47 |
| L7     | S03°55'08"W | 18.00  |
| L8     | N85°44'59"W | 356.62 |
| L9     | S04°15'01"W | 77.50  |
| L10    | N85°44'59"W | 62.17  |

**CURVE TABLE**

| CURVE: | ARC LENGTH | RADIUS | CHORD DIRECTION | CHORD LENGTH | DELTA      |
|--------|------------|--------|-----------------|--------------|------------|
| C1     | 58.90      | 37.50  | N49°15'01"E     | 53.03        | 090°00'00" |
| C2     | 73.46      | 47.00  | S49°24'54"W     | 66.21        | 089°33'22" |
| C3     | 121.73     | 77.50  | S49°14'59"W     | 109.60       | 089°59'57" |

- — — — — CENTERLINE
- P/L — — — — — PROPERTY LINE
- R/W — — — — — RIGHT-OF-WAY

**BASIS OF BEARINGS**

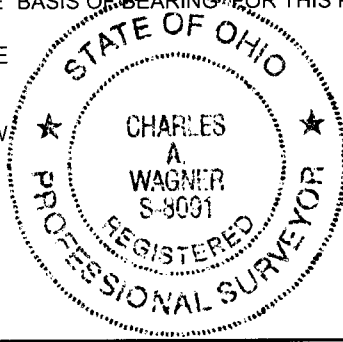
THE BEARINGS SHOWN ON THIS PLAT ARE BASED ON THE OHIO STATE PLANE COORDINATE SYSTEM, SOUTH ZONE, NAD83 (2012) EPOCH 2010. SAID BEARINGS ORIGINATED FROM A FIELD TRAVERSE WHICH WAS TIED (REFERENCED) TO SAID COORDINATE SYSTEM BY GPS OBSERVATIONS AND OBSERVATIONS OF SELECTED STATIONS IN THE OHIO DEPARTMENT OF TRANSPORTATION REAL-TIME-NETWORK. THE SOUTH RIGHT OF WAY LINE OF SERVICE ROAD, HAVING A BEARING OF N 85°44'59" W AND MONUMENTED AS SHOWN HEREON, IS DESIGNATED THE "BASIS OF BEARING" FOR THIS PLAT.

SOURCE DOCUMENTS AND AUDITOR'S PARCEL NUMBERS ARE SHOWN ON PLAT.

THIS PLAT WAS BASED ON A FIELD SURVEY CONDUCTED BY CW DESIGN GROUP, LLC UNDER MY GUIDANCE IN OCTOBER 2022.

CHARLES A. WAGNER, S-8091 DATE  
CW DESIGN GROUP, LLC

HARBIR K REKHI  
INSTR#200302050036576  
1.870 ACRES  
PID 530-158207-00



- IRON PIN FOUND
- ⊙ IRON PIPE FOUND
- PK NAIL FOUND
- IRON PIN SET-5/8"ØX30" LONG REBAR WITH A CAP THAT READS "CW DESIGN GROUP"

xBase.dwg - February 05, 2026 @ 2:09pm - © 2026

**CW Design Group**  
CIVIL ENGINEERING - LAND SURVEYING  
PHONE: 614-846-9279  
972 Linkfield Drive  
Worthington, Ohio 43085

**EXHIBIT B  
PLAT OF SURVEY**

22-0068

