



AMERICAN
STRUCTUREPOINT
INC.

2550 CORPORATE EXCHANGE DR, STE 300
COLUMBUS, OH 43231
TEL 614.901.2235 FAX 614.901.2236
www.structurepoint.com

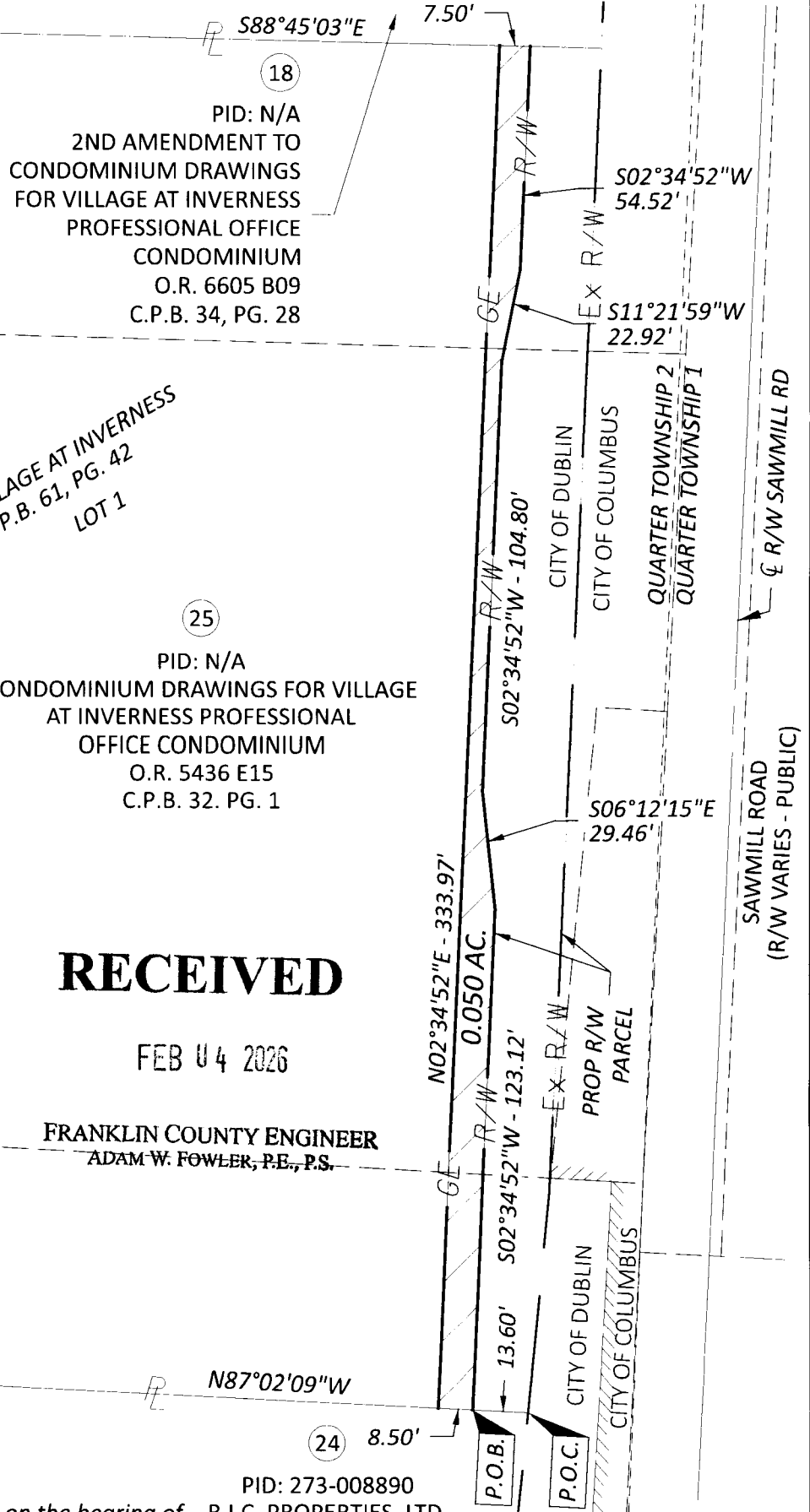
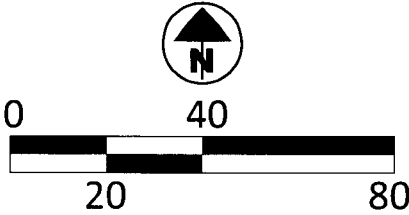
**BRIGHT ROAD
CORRIDOR
IMPROVEMENTS**

EXHIBIT "B"
0.050 AC.
25-GE

SCALE:	1" = 40'
DRAWN BY:	AHM
CHECKED BY:	JBY
DATE:	04/10/2023
JOB #:	2021.03400

1 OF 1

**SITUATED IN THE STATE OF OHIO, COUNTY OF FRANKLIN, CITY OF DUBLIN,
LOT 11, QUARTER TOWNSHIP 2, TOWNSHIP 2, RANGE 19,
UNITED STATES MILITARY LANDS**



BASIS OF BEARINGS:

Bearings described hereon are based on the bearing of South 88 degrees 40 minutes 54 seconds East for the centerline of right-of-way of Bright Road between Franklin County Geodetic Survey monument numbers 6656 and 7739, based on Grid North, referenced to the Ohio State Plane Coordinate System (South Zone) and the North American Datum of 1983 (2011 Adjustment), as established utilizing a GPS survey and an NGS OPUS solution.

I hereby certify that this drawing represents the results of an actual field survey of the premises performed by American Structurepoint, Inc., and is true and correct to the best of my knowledge and belief.

Michael J. Ward, P.S. No. 8808
American Structurepoint, Inc.

MJW

9/19/23
Date

