

SURVEY OF ACREAGE PARCEL

HALF SECTION 9, TOWNSHIP 5, RANGE 22

REFUGEE LANDS

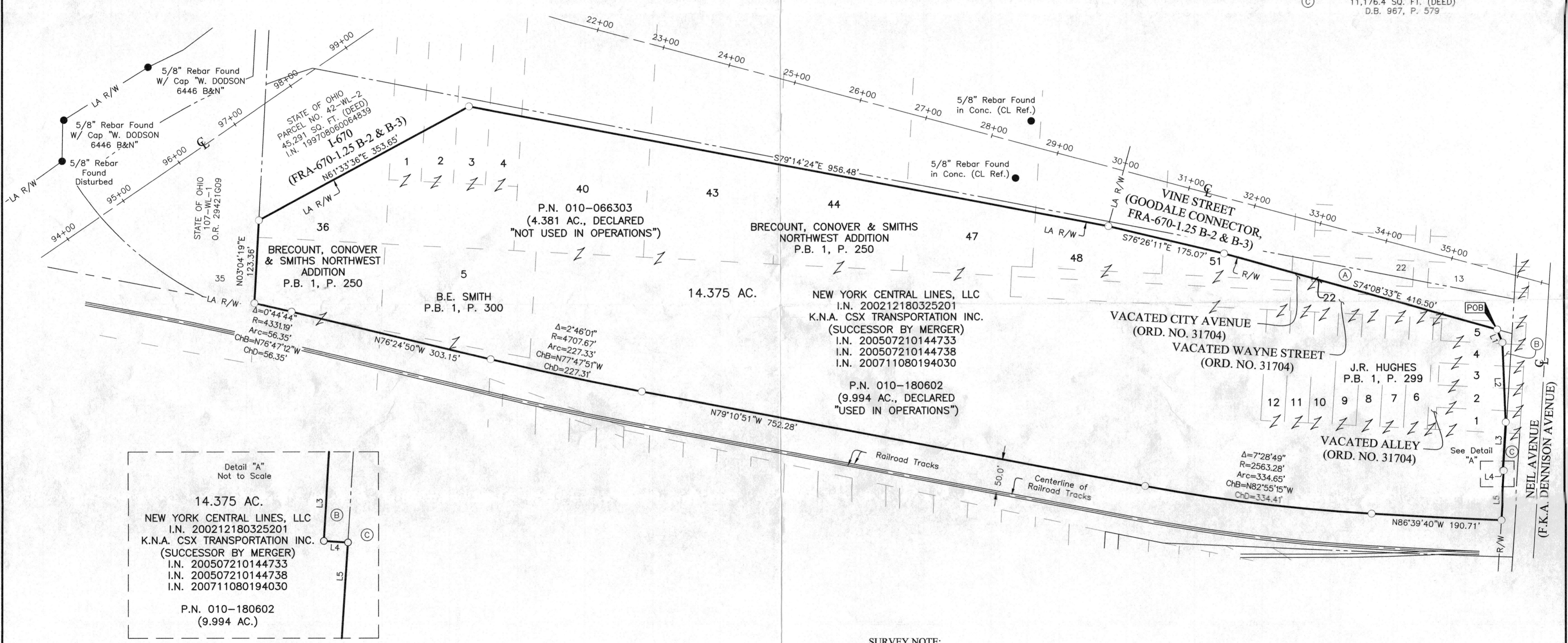
CITY OF COLUMBUS, COUNTY OF FRANKLIN, STATE OF OHIO

RECEIVED

JAN 14 2026

FRANKLIN COUNTY ENGINEER
ADAM W. FOWLER, P.E., P.S.

- (A) STATE OF OHIO
PARCEL NO. 42-WD
15,861 SQ. FT. (DEED)
I.N. 199708060064839
- (B) CITY OF COLUMBUS, OHIO
PARCEL 5-WD
0.029 AC. (DEED)
I.N. 201204160051987
- (C) CITY OF COLUMBUS, OHIO
11,176.4 SQ. FT. (DEED)
D.B. 967, P. 579



Detail "A"
Not to Scale

14.375 AC.

NEW YORK CENTRAL LINES, LLC
I.N. 200212180325201
K.N.A. CSX TRANSPORTATION INC.
(SUCCESSOR BY MERGER)
I.N. 200507210144733
I.N. 200507210144738
I.N. 200711080194030

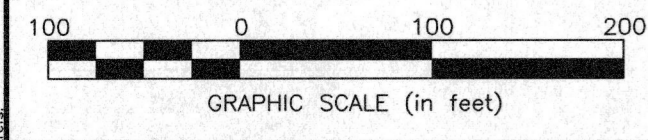
P.N. 010-180602
(9.994 AC.)

SURVEY NOTE:
This survey was prepared using documents of record, prior plats of survey, and observed evidence located by an actual field survey in August 2017.

BASIS OF BEARINGS:
The bearings shown hereon are based on the same meridian as the north right-of-way line of Nationwide Boulevard, having a bearing of North 82° 18' 16" East, per Ohio State Plane Coordinate System, South Zone (NAD83) 1986 Adjustment.

- = STONE FND.
 - = MON. FND.
 - = I.P. FND.
 - = I.P. SET
 - = MAG. NAIL FND.
 - = MAG. NAIL SET
 - ▲ = R.R. SPK. FND.
 - △ = R.R. SPK. SET
 - ◆ = P.K. NAIL FND.
- I.P. Set are 13/16" I.D. iron pipes 30" long with cap inscribed EMHT INC.

LINE TABLE		
LINE	BEARING	DISTANCE
L1	S22°03'15"E	20.85'
L2	S02°13'01"E	118.38'
L3	S03°30'08"W	72.08'
L4	S86°29'52"E	1.43'
L5	S03°34'59"W	74.33'



By *Joshua M. Meyer* 8-24-2017
Joshua M. Meyer
Professional Surveyor No. 8485
Date

EMHT Evans, Mechwart, Hambleton & Tilton, Inc. Engineers • Surveyors • Planners • Scientists 5500 New Albany Road, Columbus, OH 43054 Phone: 614.775.4500 Toll Free: 888.775.3648 emht.com	Date: August 24, 2017	
	Scale: 1" = 100'	
	Job No: 2017-0908	
	Sheet: 1 of 1	
REVISIONS		
MARK	DATE	DESCRIPTION