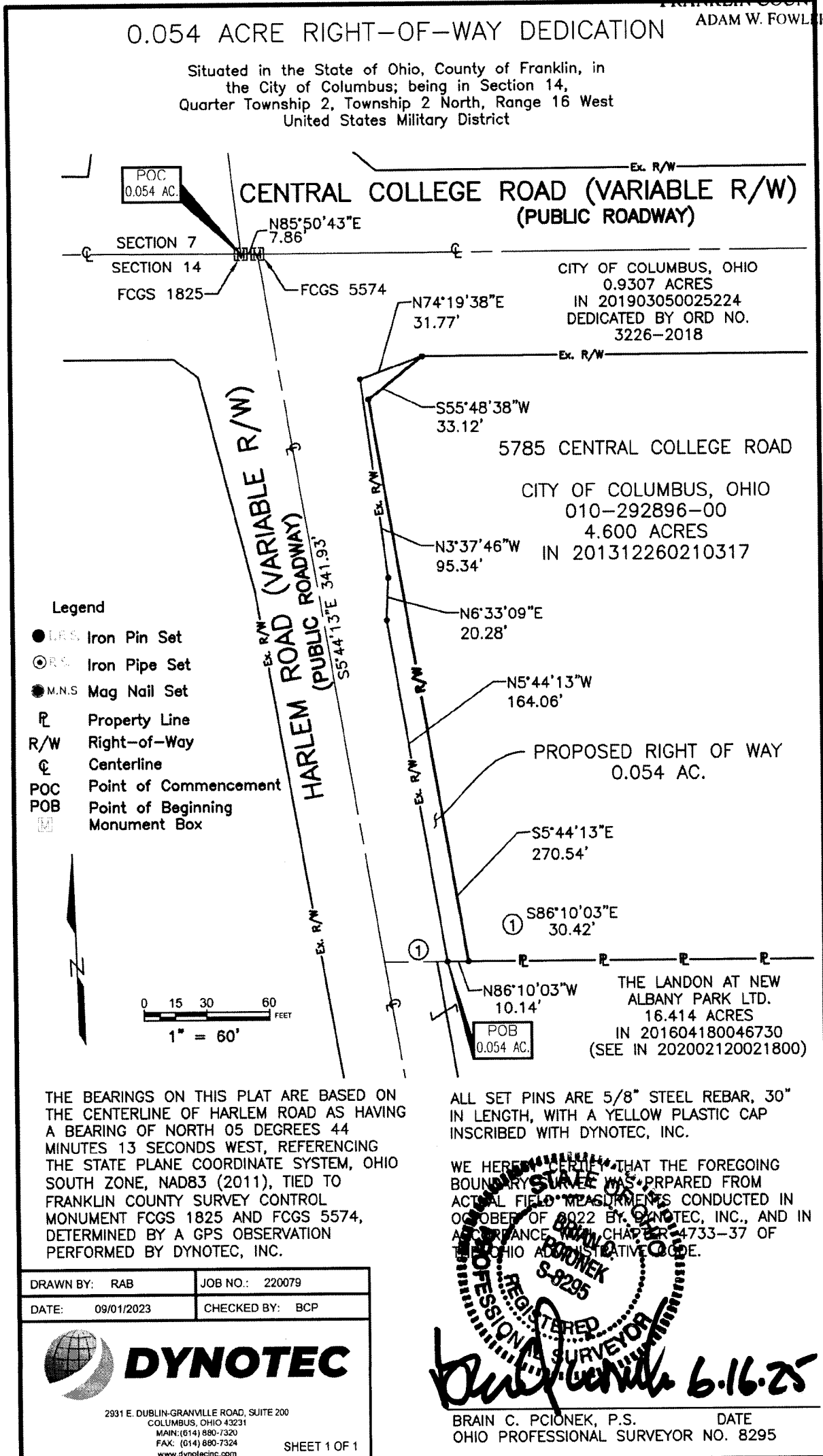


JUL 10 2025

FRANKLIN COUNTY ENGINEER  
ADAM W. FOWLER, P.E., P.S.

0.054 ACRE RIGHT-OF-WAY DEDICATION

Situated in the State of Ohio, County of Franklin, in  
the City of Columbus; being in Section 14,  
Quarter Township 2, Township 2 North, Range 16 West  
United States Military District



POC  
0.054 AC.

SECTION 7  
SECTION 14

FCGS 1825

FCGS 5574

CENTRAL COLLEGE ROAD (VARIABLE R/W)  
(PUBLIC ROADWAY)

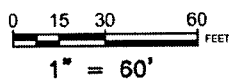
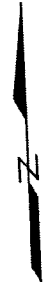
CITY OF COLUMBUS, OHIO  
0.9307 ACRES  
IN 201903050025224  
DEDICATED BY ORD NO.  
3226-2018

5785 CENTRAL COLLEGE ROAD

CITY OF COLUMBUS, OHIO  
010-292896-00  
4.600 ACRES  
IN 201312260210317

THE LONDON AT NEW  
ALBANY PARK LTD.  
16.414 ACRES  
IN 201604180046730  
(SEE IN 202002120021800)

- Legend**
- I.R.S. Iron Pin Set
  - ⊙ I.R.S. Iron Pipe Set
  - M.N.S. Mag Nail Set
  - ℙ Property Line
  - R/W Right-of-Way
  - ⊕ Centerline
  - POC Point of Commencement
  - POB Point of Beginning Monument Box



THE BEARINGS ON THIS PLAT ARE BASED ON THE CENTERLINE OF HARLEM ROAD AS HAVING A BEARING OF NORTH 05 DEGREES 44 MINUTES 13 SECONDS WEST, REFERENCING THE STATE PLANE COORDINATE SYSTEM, OHIO SOUTH ZONE, NAD83 (2011), TIED TO FRANKLIN COUNTY SURVEY CONTROL MONUMENT FCGS 1825 AND FCGS 5574, DETERMINED BY A GPS OBSERVATION PERFORMED BY DYNOTEC, INC.

ALL SET PINS ARE 5/8" STEEL REBAR, 30" IN LENGTH, WITH A YELLOW PLASTIC CAP INSCRIBED WITH DYNOTEC, INC.

WE HEREBY CERTIFY THAT THE FOREGOING BOUNDARY STATE WAS PREPARED FROM ACTUAL FIELD MEASUREMENTS CONDUCTED IN OCTOBER OF 2022 BY DYNOTEC, INC., AND IN ACCORDANCE WITH CHAPTER 4733-37 OF THE OHIO ADMINISTRATIVE CODE.

DRAWN BY: RAB	JOB NO.: 220079
DATE: 09/01/2023	CHECKED BY: BCP



2931 E. DUBLIN-GRANVILLE ROAD, SUITE 200  
COLUMBUS, OHIO 43231  
MAIN: (614) 880-7320  
FAX: (614) 880-7324  
www.dynotecinc.com

SHEET 1 OF 1

REGISTERED PROFESSIONAL SURVEYOR  
BRAIN C. PCIONEK  
S-8295  
6.16.25

BRAIN C. PCIONEK, P.S. DATE  
OHIO PROFESSIONAL SURVEYOR NO. 8295