

Line Table		
Line #	Direction	Length
L1	S13° 51' 14"E	24.05
L2	N61° 40' 22"E	138.55
L3	N56° 05' 08"E	81.02
L4	S86° 16' 43"E	30.75
L5	S03° 46' 28"W	1.00
L6	N86° 16' 43"W	30.75
L7	S61° 27' 19"W	200.23
L8	N07° 44' 11"W	73.94

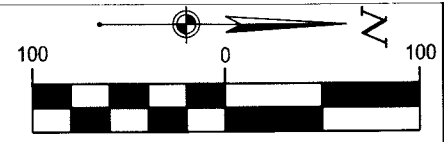
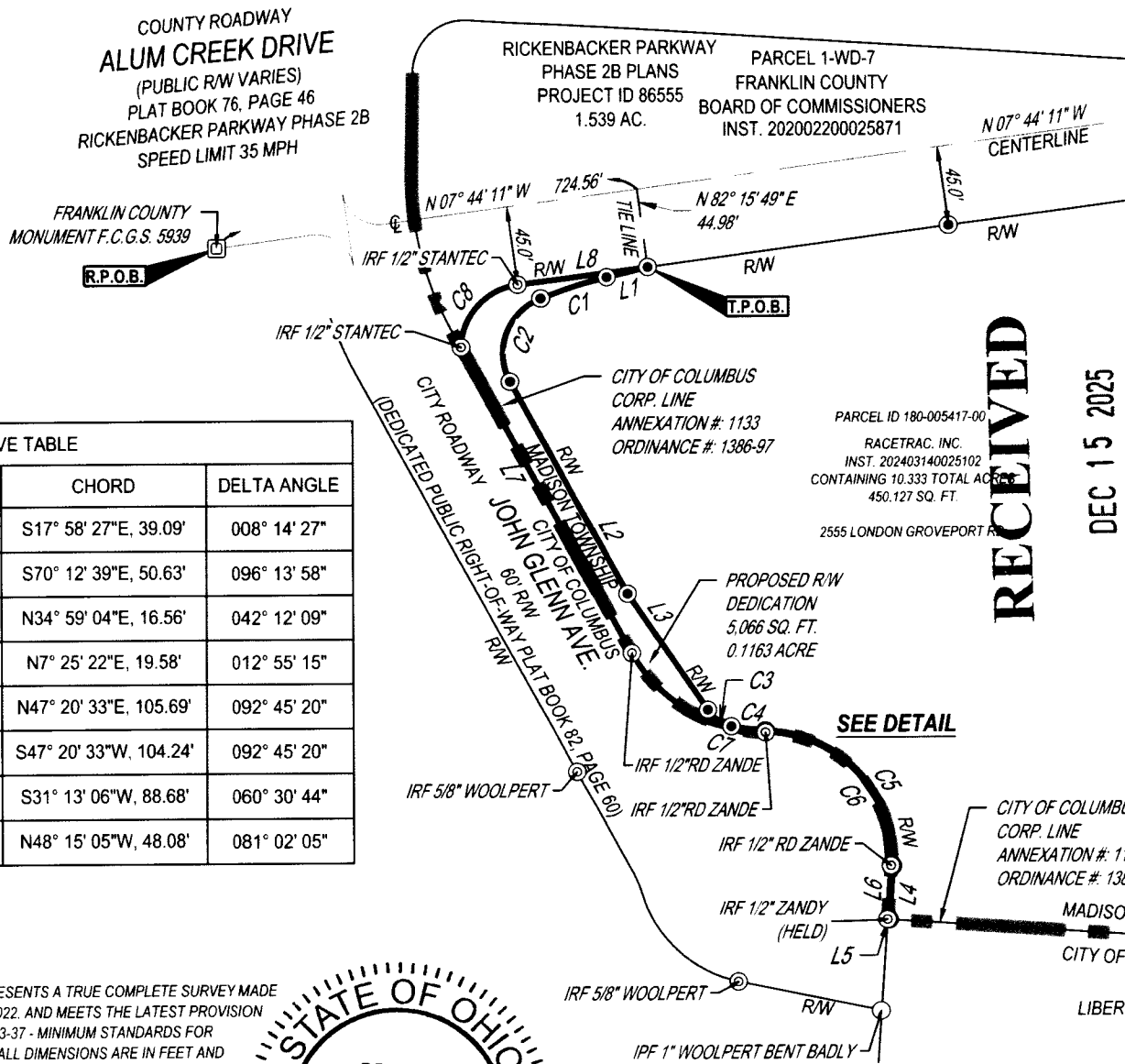
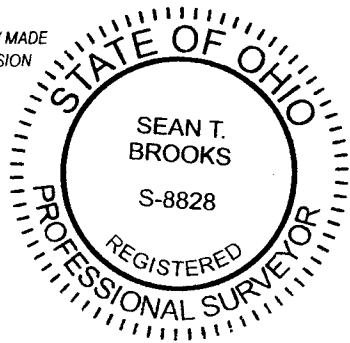
CURVE TABLE				
CURVE	RADIUS	ARC LENGTH	CHORD	DELTA ANGLE
C1	272.00'	39.12'	S17° 58' 27"E, 39.09'	008° 14' 27"
C2	34.00'	57.11'	S70° 12' 39"E, 50.63'	096° 13' 58"
C3	23.00'	16.94'	N34° 59' 04"E, 16.56'	042° 12' 09"
C4	87.00'	19.62'	N7° 25' 22"E, 19.58'	012° 55' 15"
C5	73.00'	118.18'	N47° 20' 33"E, 105.69'	092° 45' 20"
C6	72.00'	116.56'	S47° 20' 33"W, 104.24'	092° 45' 20"
C7	88.00'	92.94'	S31° 13' 06"W, 88.68'	060° 30' 44"
C8	37.00'	52.33'	N48° 15' 05"W, 48.08'	081° 02' 05"

**CERTIFICATION:**

I HEREBY CERTIFY THAT THIS DRAWING REPRESENTS A TRUE COMPLETE SURVEY MADE BY ME OR UNDER MY SUPERVISION IN JULY, 2022, AND MEETS THE LATEST PROVISION OF OHIO ADMINISTRATIVE CODE CHAPTER 4733-37 - MINIMUM STANDARDS FOR BOUNDARY SURVEYS IN THE STATE OF OHIO. ALL DIMENSIONS ARE IN FEET AND DECIMAL PARTS THEREOF.

FIELD WORK COMPLETED IN JUNE 2024.

*Signature*  
 SEAN T. BROOKS, OHIO P.S. NO. 8828  
 DATE 10-29-2025



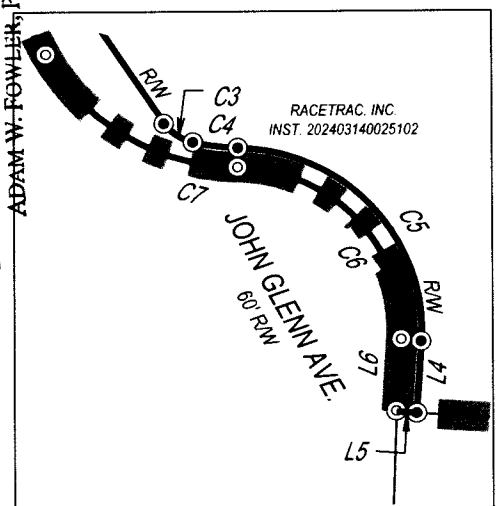
GRAPHIC SCALE (IN FEET)

**MONUMENT LEGEND:**

- SET 5/8" x 30" IRON PIN WITH YELLOW CAP STAMPED "CESO"
- MAG SPIKE SET
- ⊙ MONUMENT FOUND AS NOTED
- MONUMENT BOX
- IPF IRON PIPE FOUND
- IRF IRON PIN FOUND

FRANKLIN COUNTY ENGINEER  
 ADAM W. FOWLER, P.E., P.S.

RECEIVED  
 DEC 15 2025



**DETAIL**

N.T.S.

**LINE LEGEND:**

- PROPOSED R/W LINE
- PARCEL LINE
- CORPORATION LINE

**BASIS OF BEARINGS & HORIZONTAL DATUM**

OHIO STATE PLANE COORDINATE SYSTEM, OHIO SOUTH ZONE, NAD(83), NORTH 07°44'11" WEST FOR THE CONSTRUCTION CENTERLINE OF ALUM CREEK DRIVE BETWEEN FRANKLIN COUNTY MONUMENTS F.C.G.S. 5953 AND F.C.G.S. 5939. AS SHOWN ON THE RICKENBACKER PARKWAY PHASE 2B PROJECT NUMBER 86555 AND AVAILABLE AT THE FRANKLIN COUNTY ENGINEER'S OFFICE.



**SURVEYOR:**  
 CESO, INC.  
 3601 RIGBY ROAD, SUITE 300  
 MIAMISBURG, OHIO 45342  
 (937) 435-8584

**RACETRAC, INC.**

**ALUM CREEK DRIVE**

STATE OF OHIO, COUNTY OF FRANKLIN,  
 MADISON TOWNSHIP, SECTION 6, TOWNSHIP 10 NORTH,  
 RANGE 21 WEST, CONGRESS LANDS

© 2025 CESO, INC.

Project Number:	760926-03
Drawn By:	CTT
Checked By:	STB
Date:	10-27-2025
Issue:	

Drawing Title:  
**RW DROP**

1