

# SURVEY OF ACREAGE PARCEL

## QUARTER TOWNSHIP 3, TOWNSHIP 2, RANGE 16

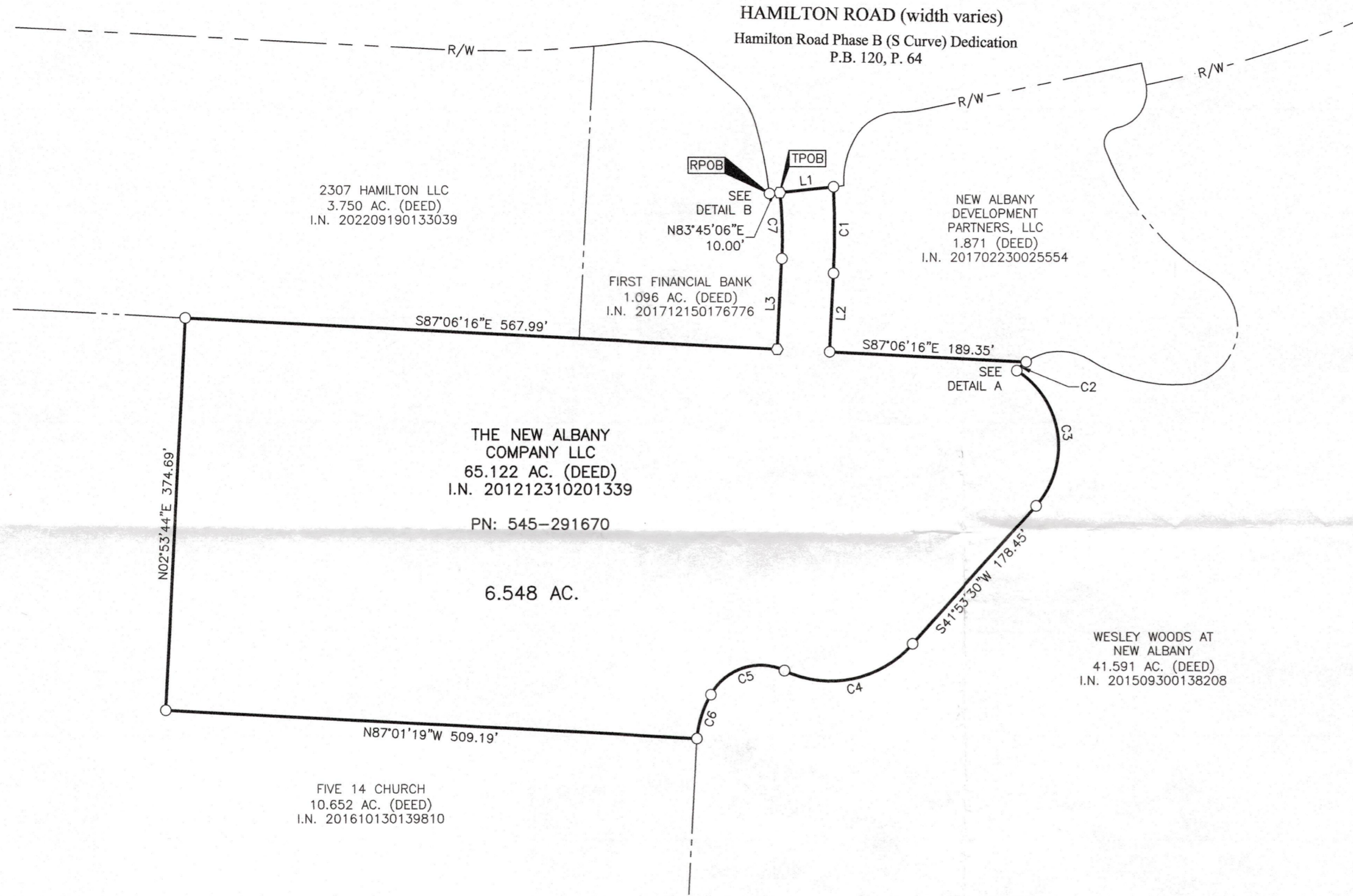
### UNITED STATES MILITARY DISTRICT

### CITY OF COLUMBUS, COUNTY OF FRANKLIN, STATE OF OHIO

**RECEIVED**

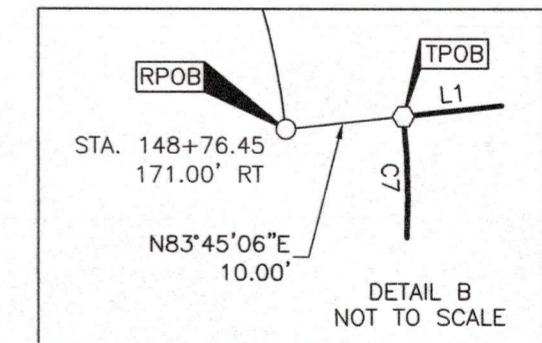
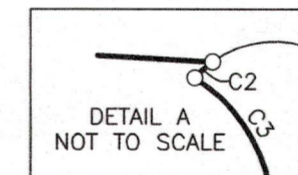
AUG 29 2025

FRANKLIN COUNTY ENGINEER  
ADAM W. FOWLER, P.E., P.S.



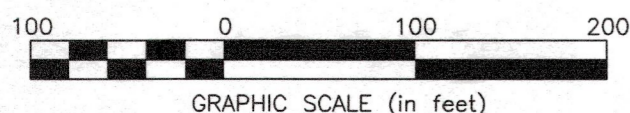
CURVE TABLE					
CURVE	DELTA	RADIUS	ARC	CH. BEARING	CH. DIST.
C1	5°45'11"	818.00'	82.14'	S00°01'11"W	82.10'
C2	12°51'13"	55.00'	12.34'	S47°53'33"W	12.31'
C3	100°04'12"	85.00'	148.46'	S08°08'36"E	130.29'
C4	72°45'43"	105.75'	134.30'	S78°16'21"W	125.45'
C5	84°44'23"	55.00'	81.34'	S72°17'01"W	74.13'
C6	24°06'44"	105.00'	44.19'	S17°51'28"W	43.86'
C7	9°08'38"	393.00'	62.72'	N01°40'35"W	62.65'

LINE TABLE		
LINE	BEARING	DISTANCE
L1	N83°45'06"E	51.53'
L2	S02°53'44"W	74.73'
L3	N02°53'44"E	86.08'



- Iron Pin Set
- Iron Pin Found
- Magnetic Nail Set
- Magnetic Nail Found

Iron Pins Set are 13/16" I.D. iron pipes  
30" long with cap inscribed EMHT INC.

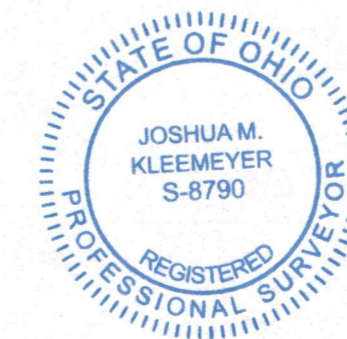


**BASIS OF BEARINGS:**

Bearings are based on the Ohio State Plane Coordinate System, South Zone, as per NAD83 (2007 Adjustment). Control for bearings was from coordinates of monuments FCGS 8815 RESET & FCGS 8814 RESET, as established by the Franklin County Engineering Department, using Global Positioning System procedures and equipment. The bearing of South 03° 12' 44" West for a portion of the centerline of Hamilton Road (Relocated) is designated the Basis of Bearings for this survey.

**SURVEY NOTE:**

This survey was prepared using documents of record, prior plats of survey, and observed evidence located by an actual field survey performed in March 2023 and March 2025.



By *Joshua M. Kleemeyer* 3/27/25  
Date  
Joshua M. Kleemeyer  
Professional Surveyor No. 8790  
jkleemeyer@emht.com

<b>EMHT</b>		Date: March 27, 2025
Evans, Mechwart, Hambleton & Tilton, Inc. Engineers • Surveyors • Planners • Scientists 5500 New Albany Road, Columbus, OH 43054 Phone: 614.775.4500 Toll Free: 888.775.3648 emht.com		Scale: 1" = 100'
		Job No: 2025-0281
		Sheet: 1 of 1
REVISIONS		
MARK	DATE	DESCRIPTION

J:\20250281\UNCL\04-SHEETS\BOUNDARY\20250281-VS-BNDY-01.DWG, plotted by JCLEEMEYER, JOSHUA on 4/15/2025 3:32:54 PM last saved by JCLEEMEYER on 4/15/2025 3:32:21 PM