



Evans, Mechwart, Hambleton & Tilton, Inc.  
 Engineers • Surveyors • Planners • Scientists  
 5500 New Albany Road, Columbus, OH 43054  
 Phone: 614.775.4500 Toll Free: 888.775.3648  
 emht.com

# SURVEY OF ACREAGE PARCELS

SURVEY NUMBER 2542

VIRGINIA MILITARY DISTRICT

CITY OF DUBLIN, COUNTY OF FRANKLIN, STATE OF OHIO

Date: February 19, 2025

Scale: 1" = 30'

Job No: 2024-0344

Sheet No: 1 of 1

### BASIS OF BEARINGS:

The Bearings shown hereon are based on the Ohio State Plane Coordinate System South Zone as per NAD83 (1986 Adjustment). Control for bearings was from coordinates of monuments FRANK 73 and FRANK 74, having a bearing of South 73° 57' 18" East, established by the Franklin County Engineering Department.

### SURVEY NOTES:

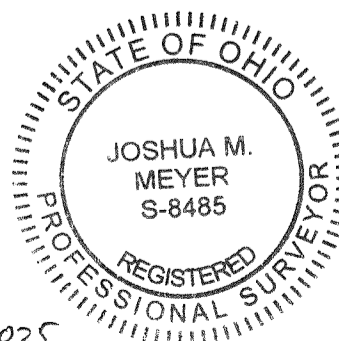
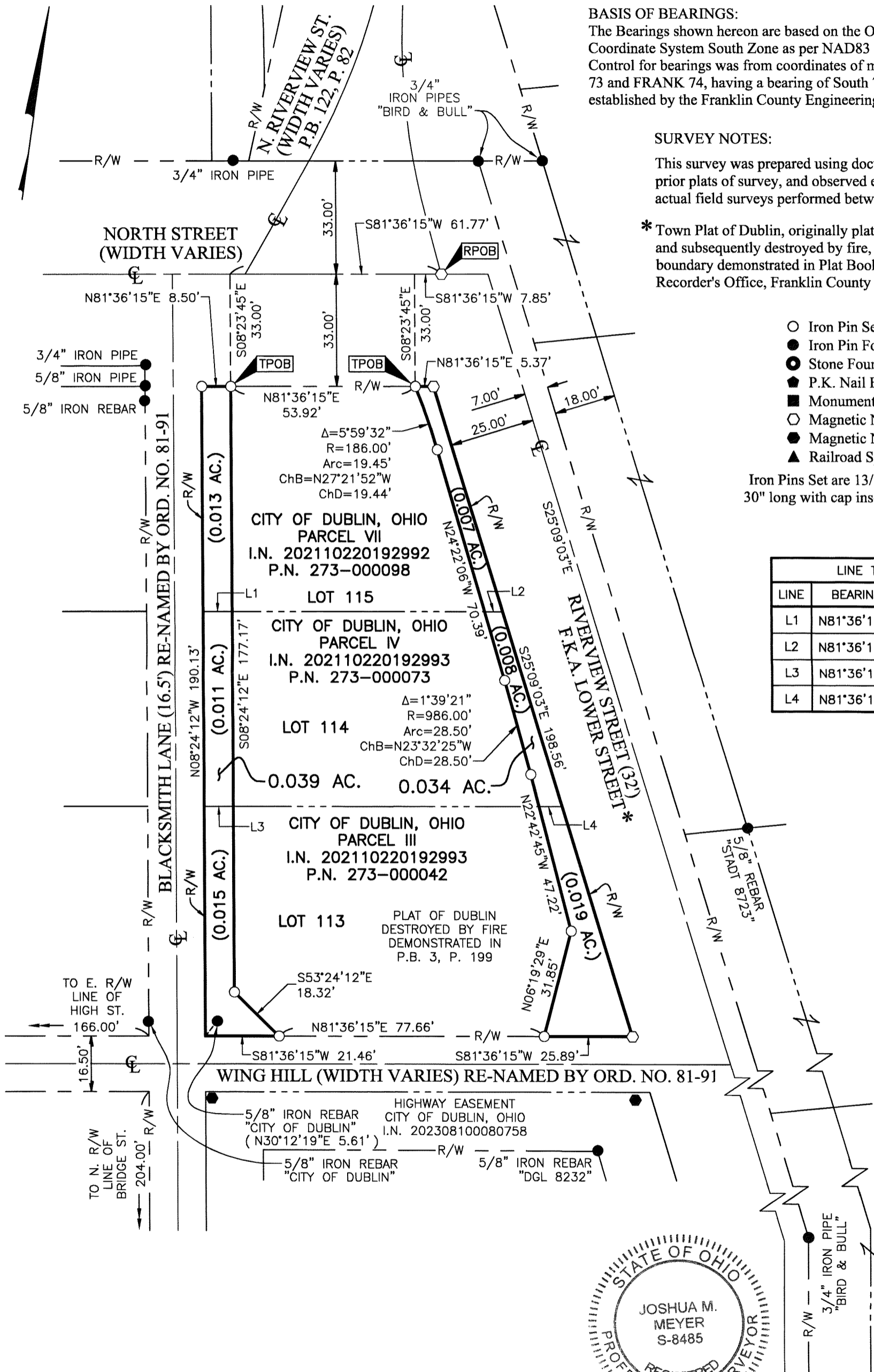
This survey was prepared using documents of record, prior plats of survey, and observed evidence located by actual field surveys performed between 2013 and 2024.

\* Town Plat of Dublin, originally platted in 1810 and subsequently destroyed by fire, incorporated boundary demonstrated in Plat Book 3, Page 199, Recorder's Office, Franklin County Ohio.

- Iron Pin Set
- Iron Pin Found
- Stone Found
- P.K. Nail Found
- Monument Found
- Magnetic Nail Set
- Magnetic Nail Found
- ▲ Railroad Spike Found

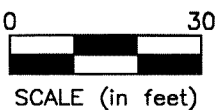
Iron Pins Set are 13/16" I.D. iron pipes 30" long with cap inscribed EMHT INC.

LINE TABLE		
LINE	BEARING	DISTANCE
L1	N81°36'15"E	8.50'
L2	N81°36'15"E	5.29'
L3	N81°36'15"E	8.50'
L4	N81°36'15"E	6.86'



By Joshua M. Meyer  
 Professional Surveyor No. 8485  
 jmeyer@emht.com

2-19-2025  
 Date



J:\20240344\DWG\04SHEETS\BOUNDARY\20240344-VS-BNDY-02.DWG plotted by FERGIUSON, DAVID on 2/19/2025 11:44:24 AM last saved by DFERGIUSON on 2/19/2025 11:44:22 AM