



Evans, Mechwart, Hambleton & Tilton, Inc.
 Engineers • Surveyors • Planners • Scientists
 5500 New Albany Road, Columbus, OH 43054
 Phone: 614.775.4500 Toll Free: 888.775.3648
 emht.com

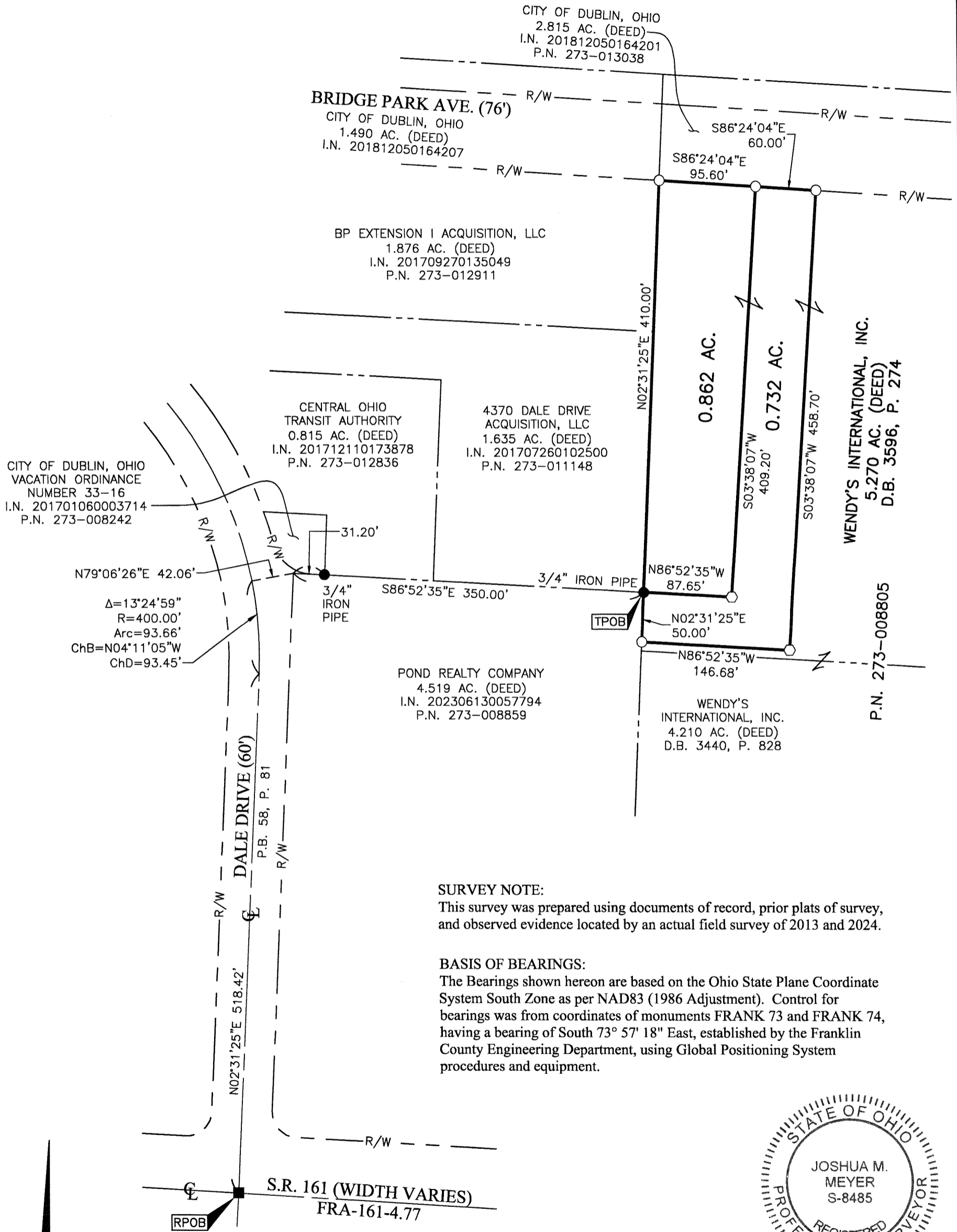
SURVEYS OF ACREAGE PARCELS

LOT 11, QUARTER TOWNSHIP 3, TOWNSHIP 2, RANGE 19

UNITED STATES MILITARY DISTRICT

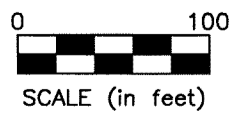
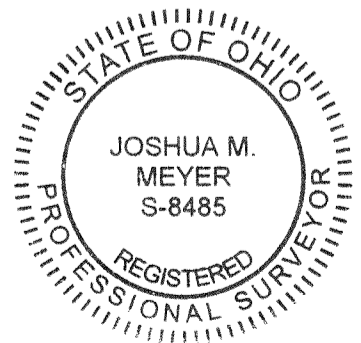
CITY OF DUBLIN, COUNTY OF FRANKLIN, STATE OF OHIO

Date: March 13, 2025 Scale: 1" = 100' Job No: 2024-0817 Sheet No: 1 of 1



SURVEY NOTE:
 This survey was prepared using documents of record, prior plats of survey, and observed evidence located by an actual field survey of 2013 and 2024.

BASIS OF BEARINGS:
 The Bearings shown hereon are based on the Ohio State Plane Coordinate System South Zone as per NAD83 (1986 Adjustment). Control for bearings was from coordinates of monuments FRANK 73 and FRANK 74, having a bearing of South 73° 57' 18" East, established by the Franklin County Engineering Department, using Global Positioning System procedures and equipment.



- Iron Pin Set
- Iron Pin Found
- Monument Found

Iron Pins Set are 13/16" I.D. iron pipes 30" long with cap inscribed EMHT INC.

By *Joshua M. Meyer* Date 3-13-2025
 Joshua M. Meyer
 Professional Surveyor No. 8485
 jmeyer@emht.com

J:\20240817\DWG\04SHEETS\BOUNDARY\20240817-VS-BNDY-01 - WITHOUT_IMP.DWG plotted by FERGUSON, DAVID on 3/13/2025 9:53:36 AM last saved by DFERGUSON on 3/13/2025 9:53:33 AM