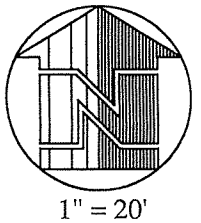


# 0.062 Acre Tract As conveyed to the City of Columbus Franklin County, Ohio

Situated in the State of Ohio, County of Franklin, City of Columbus, and located in Half  
Section 12, Township 5, Range 22, Refugee Lands,  
being parts of Lots 17 and 18 of John C. Bullitt's Eighth Street Addition (P.B. 3 PG 299)



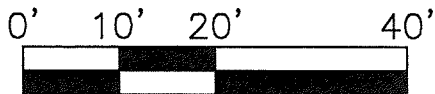
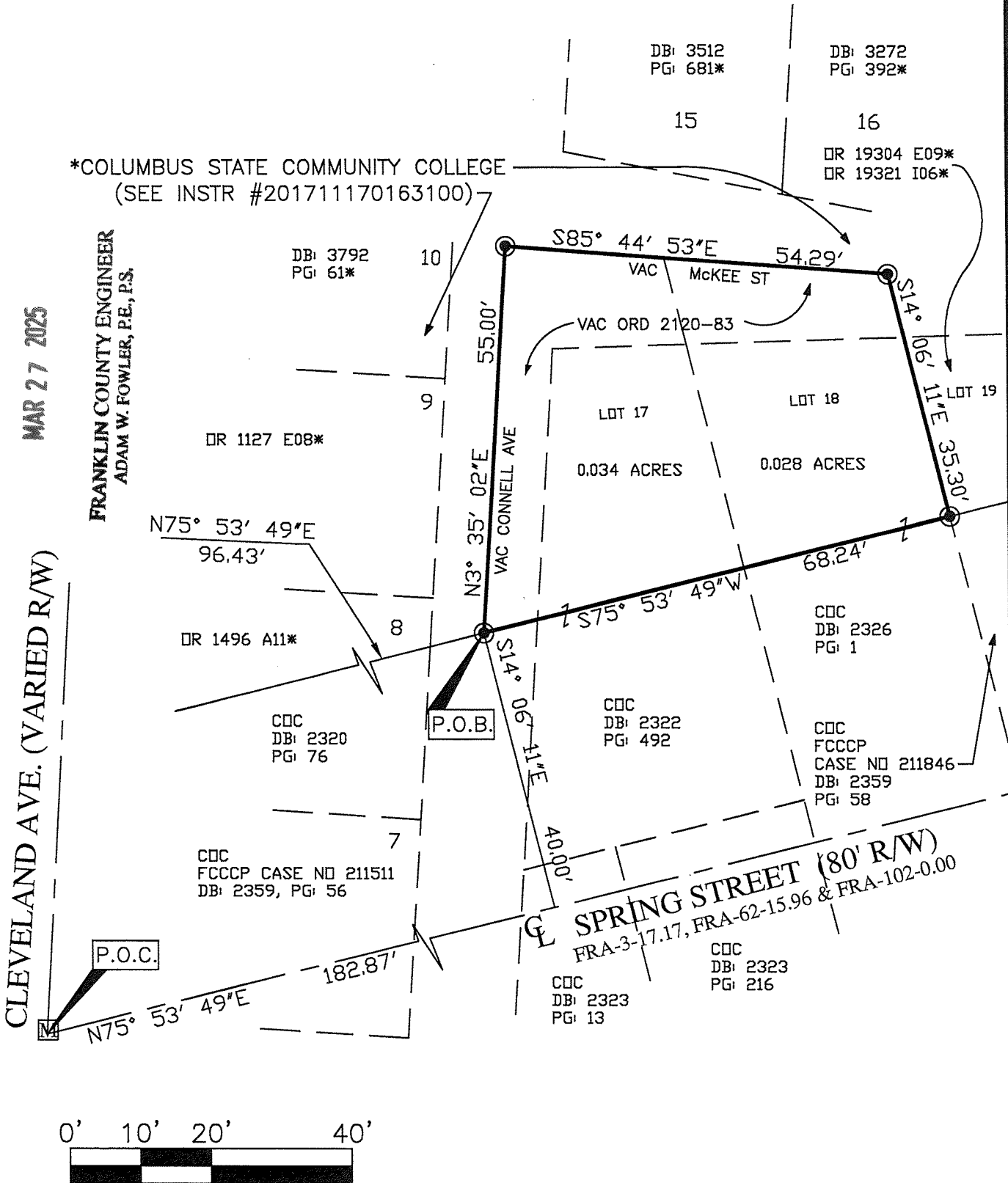
1" = 20'

**RECEIVED**

MAR 27 2025

FRANKLIN COUNTY ENGINEER  
ADAM W. FOWLER, P.E., P.S.

CLEVELAND AVE. (VARIED R/W)



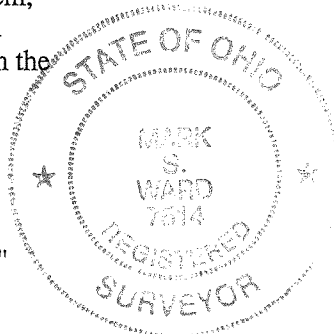
SCALE IN FEET

**Basis of Bearings:**

The bearings system shown hereon is based on the Ohio State Plane Coordinate System, South Zone as per NAD 83, and were established utilizing ODOT RTN system, GPS equipment and procedures with an established bearing of N 75 degrees 53 minutes 49 seconds E on the centerline of Spring Street.

**LEGEND**

- ☐ Monument Box
- 5/8"x 30" rebar with caps stamped "RII"



RESOURCE INTERNATIONAL INC.  
6350 PRESIDENTIAL GATEWAY  
COLUMBUS, OHIO 43231  
(614) 823-4949

I hereby state that the above map was prepared from record information and field measurements conducted by Resource International, Inc. in April 2024.

*Mark S. Ward*  
Mark S. Ward Date  
P.S. S-7514

3-4-25