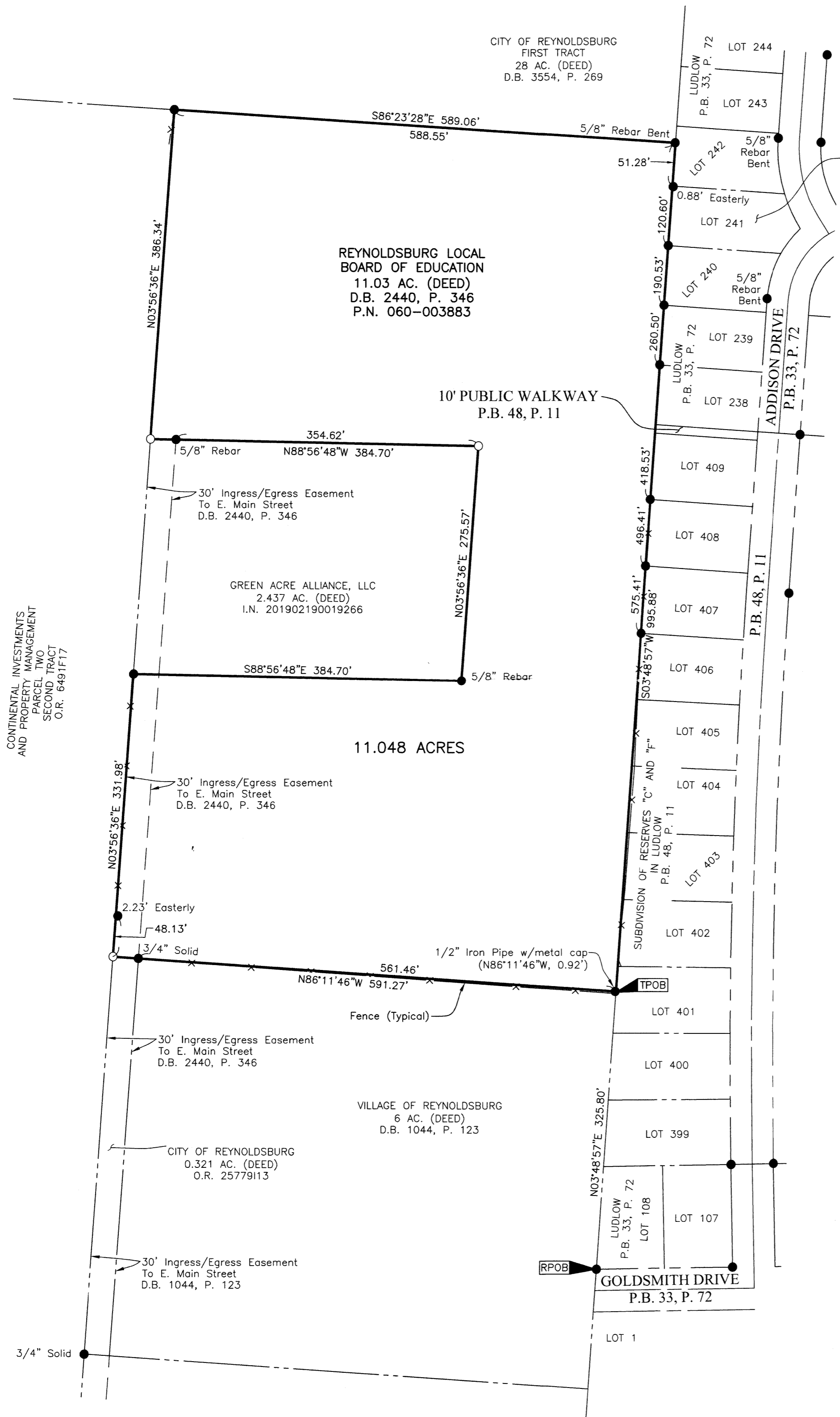


SURVEY OF ACREAGE PARCEL

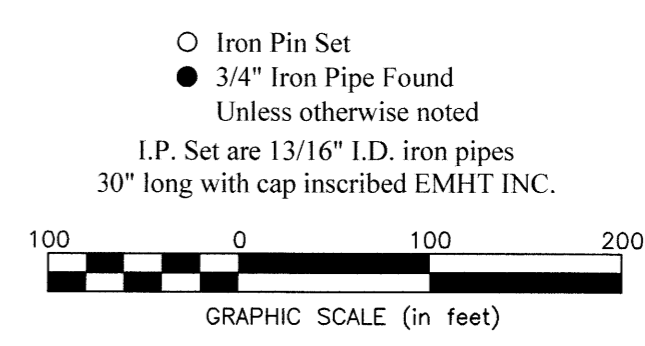
HALF SECTION 9, SECTION 8, TOWNSHIP 16, RANGE 20

REFUGEE LANDS

CITY OF REYNOLDSBURG, COUNTY OF FRANKLIN, STATE OF OHIO



AMENDED PLAT OF PARTS OF LUDLOW P.B. 45, P. 15



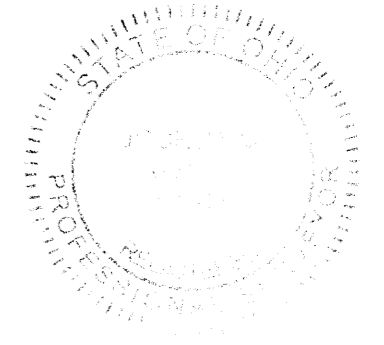
BASIS OF BEARINGS:
The Bearings shown hereon are based on the Ohio State Plane Coordinate System South Zone as per NAD83 (NSRS2007). Control for bearings was from coordinates of monuments GLENREST and FRANK48, having a bearing of North 08° 32' 44" East, established by the Franklin County Engineering Department, using Global Positioning System procedures and equipment.

SURVEY NOTE:
This survey was prepared using documents of record, prior plats of survey, and observed evidence located by an actual field survey in August 2022.

RECEIVED

FEB U 4 2025

FRANKLIN COUNTY ENGINEER
JOSHUA M. MEYER, P.E., P.S.



By Joshua M. Meyer Date 9-3-2022
Joshua M. Meyer
Professional Surveyor No. 8485
jmeyer@emht.com

PRELIMINARY APPROVAL
Completed 09/08/2022
BY: jwiggins
09/08/2022
PENDING ORIGINALS

EMHT		Date: September 8, 2022
Evans, Mechwart, Hambleton & Tilton, Inc. Engineers • Surveyors • Planners • Scientists 5500 New Albany Road, Columbus, OH 43054 Phone: 614.775.4500 Toll Free: 888.775.3648 emht.com		Scale: 1" = 100'
		Job No: 2022-0688
		Sheet: 1 of 1
REVISIONS		
MARK	DATE	DESCRIPTION

J:\20220688\DWG\CAD\SHETS\BOUNDARY\FRANKLIN CNTY\20220688-VS-BNDY-01.DWG plotted by MEYER, JOSH on 9/8/2022 1:18:22 PM last saved by MEYER, JOSH on 9/8/2022 1:17:56 PM