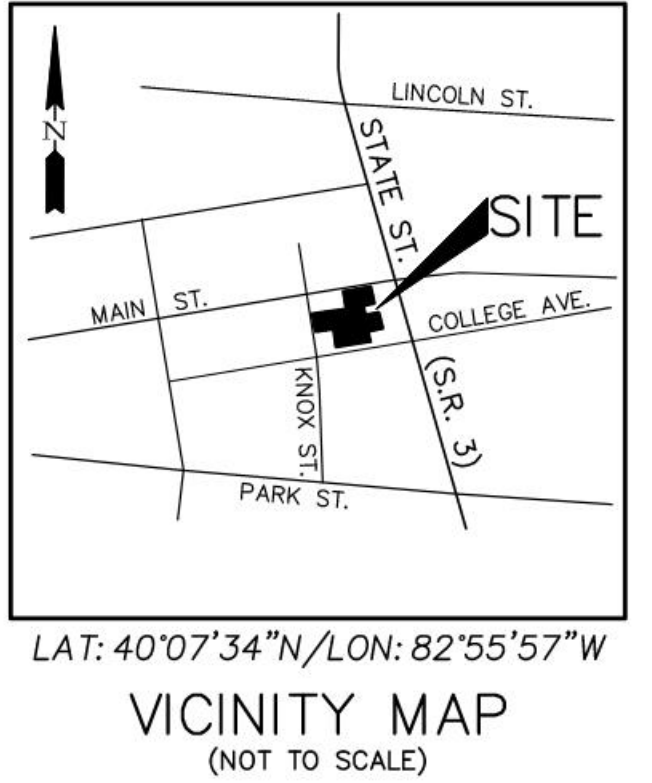
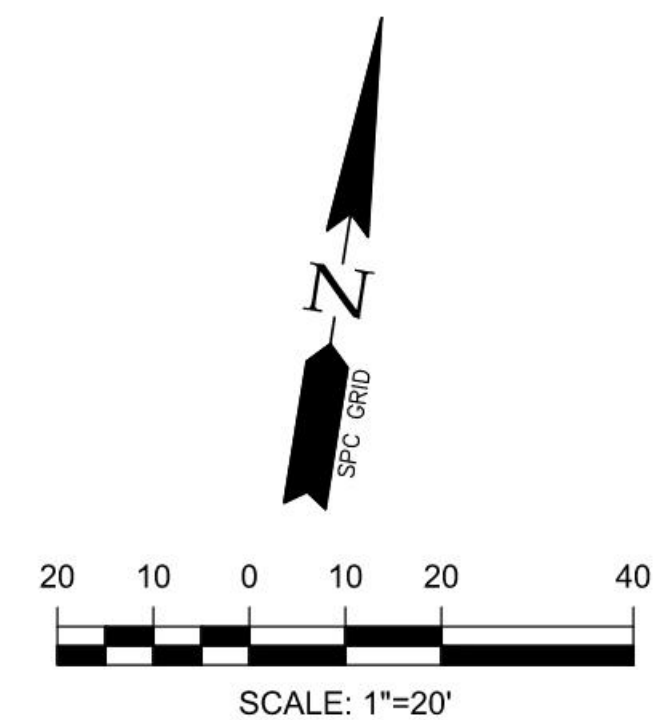
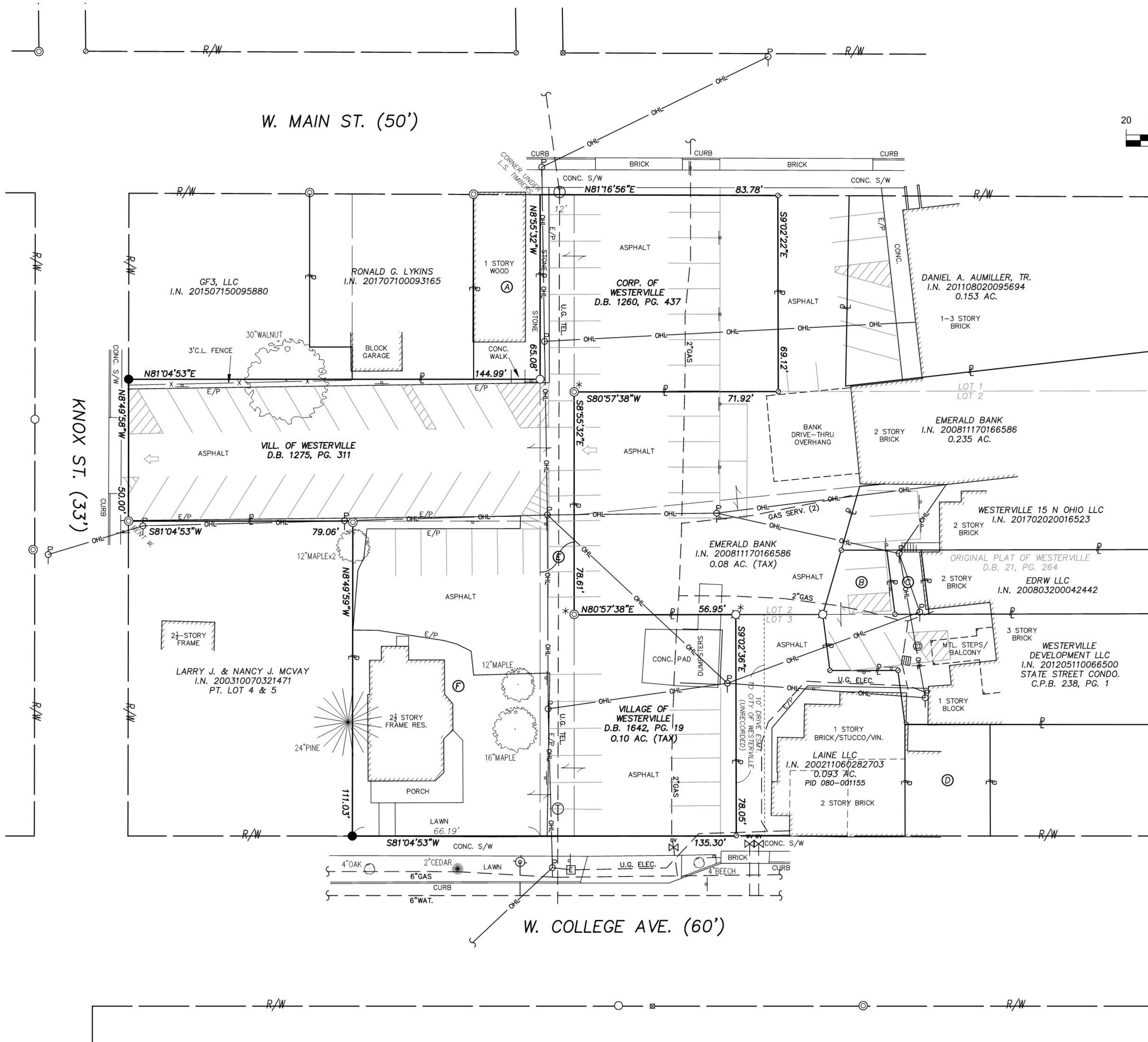


PROPERTY OWNERS

- Ⓐ DAVID S. BIRCHEM AND KAREN R. BIRCHEM D.B. 3374, PG. 399
- Ⓑ WESTERVILLE DEVELOPMENT, LLC I.N. 201604290053369 0.011 AC.
- Ⓒ UNKNOWN OWNER 0.006 AC.
- Ⓓ LEHNER INVESTMENT CORP. I.N. 200805130073697 0.027 AC.
- Ⓔ CORP. OF WESTERVILLE D.B. 1275, PG. 311 0.07 AC. (TAX)
- Ⓕ CITY OF WESTERVILLE, OHIO I.N. 201412160166455 PT. LOT 4



LEGEND

- ⊙ IRON PIPE FOUND
- IRON PIN FOUND
- ⊗ RR SPK FOUND
- ⊙ MAG NAIL FOUND
- ⊗ DRILL HOLE FOUND
- IRON PIN SET (5/8" O.D. REBAR 30" LONG W/CAP (LOMANO 7711))
- MAG NAIL SET
- ⊕ SIGN
- ⊗ GAS VALVE
- ⊕ TEL. MANHOLE
- ⊕ UTILITY POLE
- ⊕ ELEC. MANHOLE
- ⊕ STORM CATCH BASIN
- ⊕ GREASE TRAP
- ⊕ FIRE HYDRANT
- ⊕ WATER VALVE
- ⊕ DECIDUOUS TREE
- ⊕ CONIFER TREE
- R/W ROAD RIGHT-OF-WAY
- P PROPERTY LINE
- X FENCE
- OHL OVERHEAD UTILITY LINE

NOT REVIEWED BY TAX MAP

SURVEY NOTES

- 1) SURVEY COORDINATE SYSTEM REFERENCED TO STATE PLANE GRID, OHIO SOUTH ZONE, PER A VRS, GPS SURVEY.
- 2) SOME SURVEY MONUMENTS SHOWN HEREON WERE RECOVERED DURING PREVIOUS SURVEYS AND HAVE SINCE BEEN PAVED OVER. THESE CORNER MONUMENTS DENOTED BY "*" ON DRAWING.
- 3) LOT NOS. REFERENCED TO THE ORIGINAL PLAT OF WESTERVILLE, OF RECORD IN D.B. 21, PG. 264.
- 4) UNDERGROUND UTILITIES SHOWN HEREON ARE BASED ON FIELD EVIDENCE AND RECORD PLANS. OTHER UTILITIES MAY EXIST WHICH ARE NOT SHOWN.
- 5) SURVEYOR WAS NOT PROVIDED A TITLE COMMITMENT FOR PROJECT AREA PROPERTIES. OTHER EASEMENTS MAY EXIST ON WESTERVILLE PROPERTIES OR ADJOINING PROPERTIES WHICH ARE NOT SHOWN.

REVISIONS



WESTERVILLE LAND SURVEYING, LLC
 BY: Michael P. Lomano
 OHIO PROFESSIONAL SURVEYOR No. 7711
 125 E. HOME ST., "A"
 WESTERVILLE, OH 43081
 (614) 899-2209

BOUNDARY/PLANIMETRIC SURVEY
 UPTOWN, COLLEGE TO MAIN
 WEST OF STATE ST.

SHEET
 1 / 1