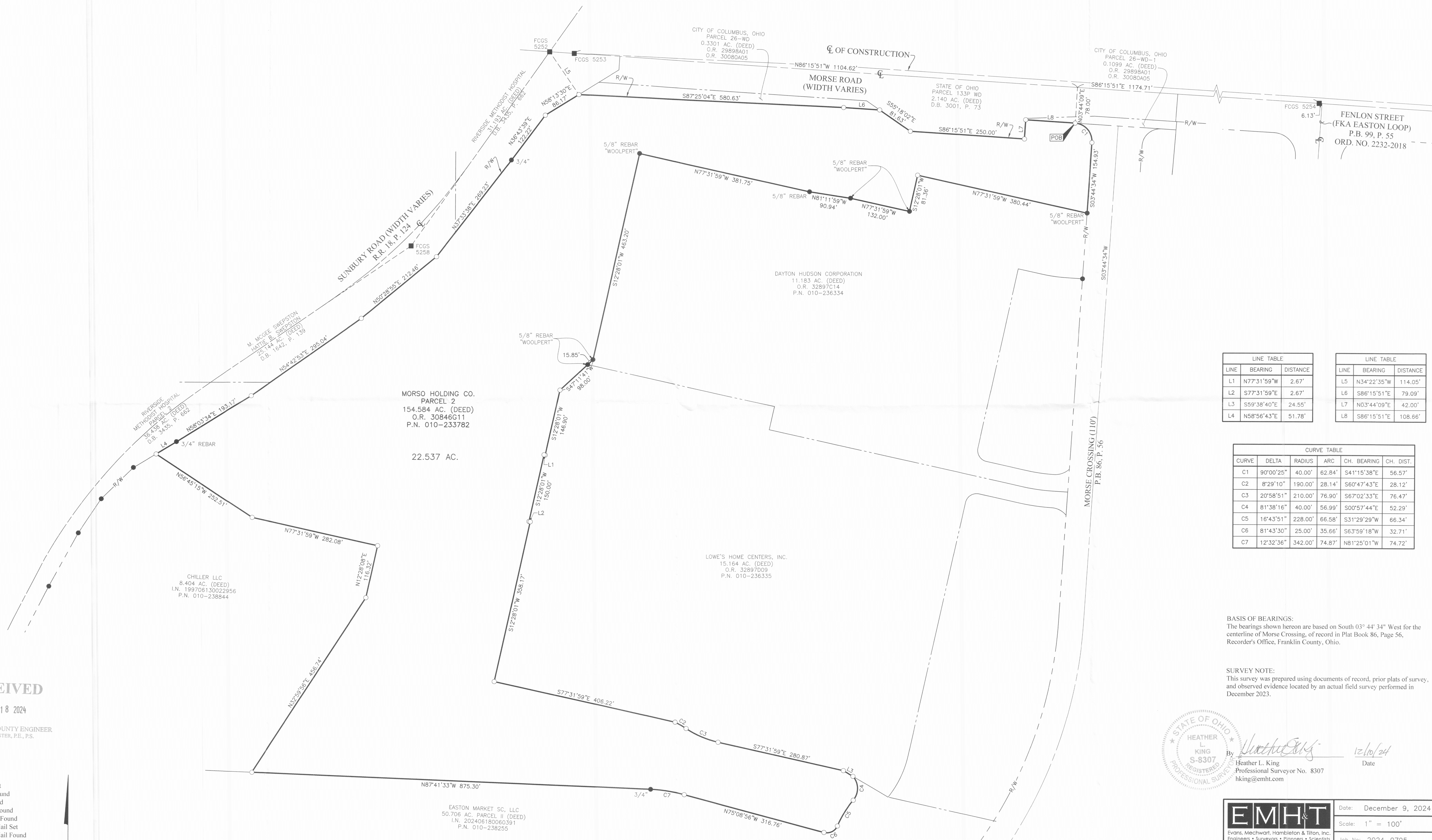


# SURVEY OF ACREAGE PARCEL

## QUARTER TOWNSHIP 2, TOWNSHIP 1, RANGE 17

### UNITED STATES MILITARY DISTRICT

### CITY OF COLUMBUS, COUNTY OF FRANKLIN, STATE OF OHIO



LINE TABLE		
LINE	BEARING	DISTANCE
L1	N77°31'59"W	2.67'
L2	S77°31'59"E	2.67'
L3	S59°38'40"E	24.55'
L4	N58°56'43"E	51.78'

LINE TABLE		
LINE	BEARING	DISTANCE
L5	N34°22'35"W	114.05'
L6	S86°15'51"E	79.09'
L7	N03°44'09"E	42.00'
L8	S86°15'51"E	108.66'

CURVE TABLE					
CURVE	DELTA	RADIUS	ARC	CH. BEARING	CH. DIST.
C1	90°00'25"	40.00'	62.84'	S41°15'38"E	56.57'
C2	8°29'10"	190.00'	28.14'	S60°47'43"E	28.12'
C3	20°58'51"	210.00'	76.90'	S67°02'33"E	76.47'
C4	81°38'16"	40.00'	56.99'	S00°57'44"E	52.29'
C5	16°43'51"	228.00'	66.58'	S31°29'29"W	66.34'
C6	81°43'30"	25.00'	35.66'	S63°59'18"W	32.71'
C7	12°32'36"	342.00'	74.87'	N81°25'01"W	74.72'

**BASIS OF BEARINGS:**  
 The bearings shown hereon are based on South 03° 44' 34" West for the centerline of Morse Crossing, of record in Plat Book 86, Page 56, Recorder's Office, Franklin County, Ohio.

**SURVEY NOTE:**  
 This survey was prepared using documents of record, prior plats of survey, and observed evidence located by an actual field survey performed in December 2023.

By: *Heather L. King*  
 Heather L. King  
 Professional Surveyor No. 8307  
 hking@emht.com  
 Date: 12/10/24

**RECEIVED**  
 DEC 18 2024  
 FRANKLIN COUNTY ENGINEER  
 BRAD FOSTER, P.E., P.S.

- Iron Pin Set
- Iron Pin Found
- Stone Found
- P.K. Nail Found
- Monument Found
- Magnetic Nail Set
- Magnetic Nail Found
- ▲ Railroad Spike Found

Iron Pins Set are 1 3/16" I.D. iron pipes 30" long with cap inscribed EMHT INC.

 Evans, Mechwart, Hambleton & Tilton, Inc. Engineers • Surveyors • Planners • Scientists 5500 New Albany Road, Columbus, OH 43204 Phone: 614.775.4500    Toll Free: 888.773.3648 emht.com	Date: December 9, 2024	
	Scale: 1" = 100'	
	Job No: 2024-0795	
Sheet: 1 of 1		
REVISIONS		
MARK	DATE	DESCRIPTION