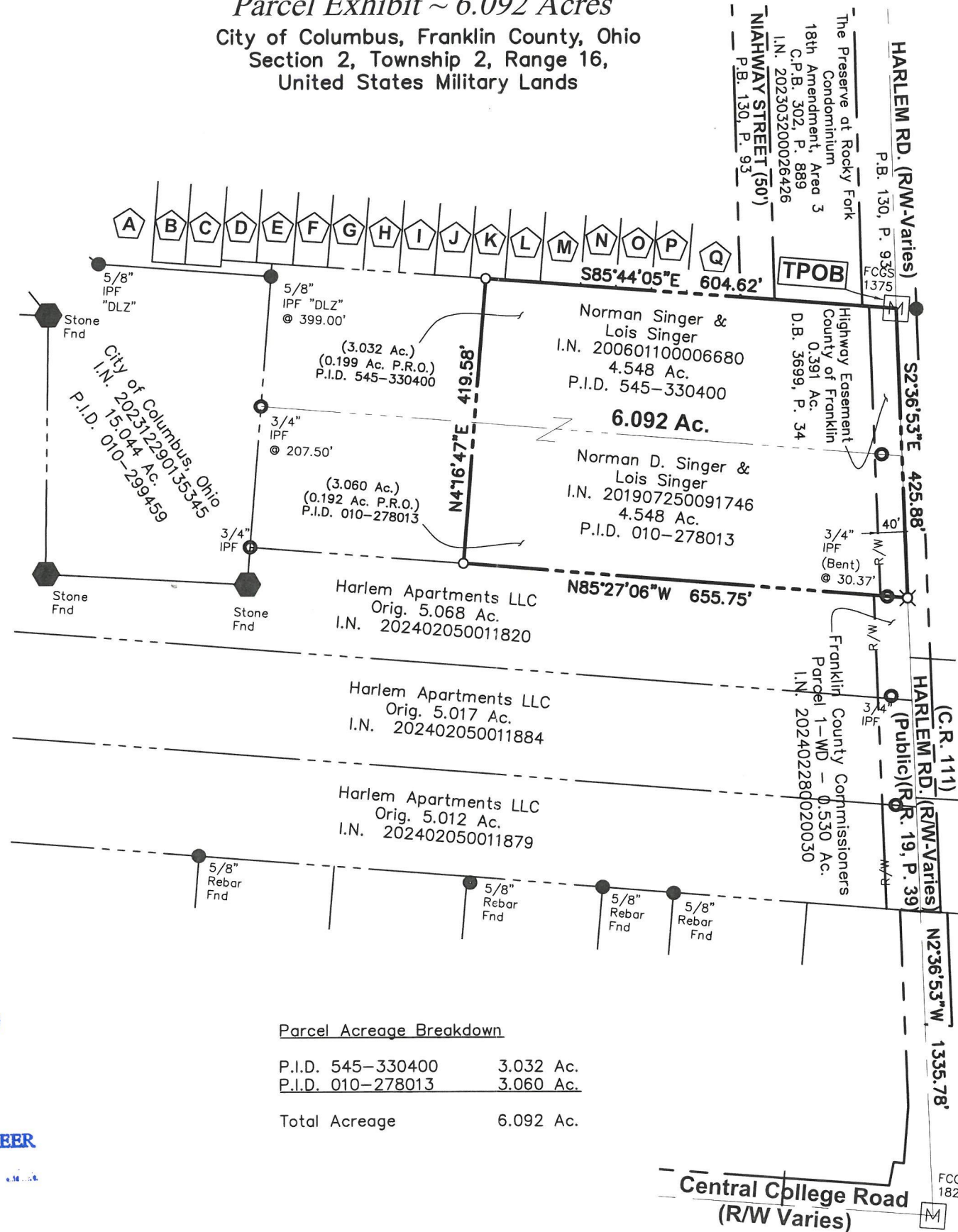


Z:\21-0229-65\DWG\PRODUCTION DRAWINGS\SURVEY\21-0229-65 singer remainder.dwg Layout1-Page 1 Oct 14, 2024 - 8:54:30am bkarshner

- A** The Preserve at Rocky Fork Condominium
18th Amendment, Area 5
C.P.B. 302, P. 889
I.N. 202303200026426
- B** The Preserve at Rocky Fork Condominium
8th Amendment, Area 6
C.P.B. 301, P. 83
I.N. 202112070222078
- C** The Preserve at Rocky Fork Condominium
10th Amendment, Area 4
C.P.B. 301, P. 481
I.N. 202205020066947
- D** The Preserve at Rocky Fork Condominium
7th Amendment
C.P.B. 300, P. 25
I.N. 202110060180472
- E** The Preserve at Rocky Fork Condominium
9th Amendment, Area 4
C.P.B. 301, P. 366
I.N. 202203090037707
- F** The Preserve at Rocky Fork Condominium
8th Amendment, Area 5
C.P.B. 301, P. 83
I.N. 202112070222078
- G** The Preserve at Rocky Fork Condominium
9th Amendment, Area 3
C.P.B. 301, P. 366
I.N. 202203090037707
- H** The Preserve at Rocky Fork Condominium
8th Amendment, Area 4
C.P.B. 301, P. 83
I.N. 202112070222078
- I** The Preserve at Rocky Fork Condominium
9th Amendment, Area 2
C.P.B. 301, P. 366
I.N. 202203090037707
- J** The Preserve at Rocky Fork Condominium
10th Amendment, Area 3
C.P.B. 301, P. 481
I.N. 202205020066947
- K** The Preserve at Rocky Fork Condominium
11th Amendment, Area 3
C.P.B. 301, P. 657
I.N. 202206170090543
- L** The Preserve at Rocky Fork Condominium
12th Amendment, Area 4
C.P.B. 301, P. 791
I.N. 202208220120563
- M** The Preserve at Rocky Fork Condominium
14th Amendment, Area 4
C.P.B. 301, P. 907
I.N. 202210210147576
- N** The Preserve at Rocky Fork Condominium
10th Amendment, Area 2
C.P.B. 301, P. 481
I.N. 202205020066947
- O** The Preserve at Rocky Fork Condominium
12th Amendment, Area 3
C.P.B. 301, P. 791
I.N. 202208220120563
- P** The Preserve at Rocky Fork Condominium
13th Amendment, Area 4
C.P.B. 301, P. 857
I.N. 202209280137656
- Q** The Preserve at Rocky Fork Condominium
14th Amendment, Area 3
C.P.B. 301, P. 907
I.N. 202210210147576

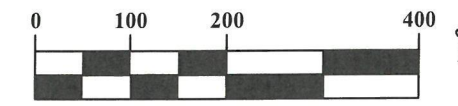
Parcel Exhibit ~ 6.092 Acres
City of Columbus, Franklin County, Ohio
Section 2, Township 2, Range 16,
United States Military Lands



Parcel Acreage Breakdown

P.I.D. 545-330400	3.032 Ac.
P.I.D. 010-278013	3.060 Ac.
Total Acreage	6.092 Ac.

GRAPHIC SCALE



1 inch = 200 feet

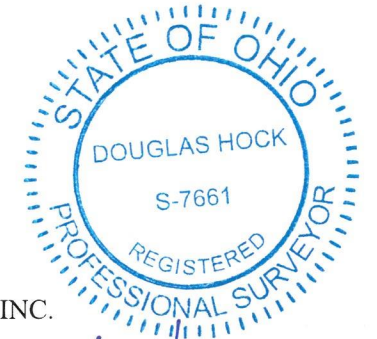
Legend

- Iron Pin Found
- Iron Pipe Found
- ▲ Railroad Spike Found
- ✕ PK Nail Set
- Ⓜ Mon. Box Found
- Iron Pin Set
- ⊗ PK Nail Set
- ⬢ Stone Found

This exhibit is based on information obtained from the Franklin County Auditor's and the Franklin County Recorder's Office. Also on a field survey by Advanced Civil Design, Inc. in September of 2022.

Iron pins noted as set are 5/8" diameter rebar, 30" in length, with a plastic cap in top inscribed "Advanced".

Bearings are based on the Ohio State Plane Coordinate System, South Zone, NAD83 (NSRS2011). Said bearings were derived from GPS observation and determine the centerline of Harlem Road of having a bearing of N02°36'53"W between FCGS 1825 and FCGS 1375.



ADVANCED CIVIL DESIGN, INC.

Douglas R. Hock, P.S. 7661
Date: 10/14/24

RECEIVED

NOV 6 2024

FRANKLIN COUNTY ENGINEER
BRAD FOSTER, P.E., P.S.

DRAWN BY: BCK	JOB NO.: 21-0229-65
DATE: 10/11/24	CHECKED BY: DRB

ADVANCED CIVIL DESIGN ENGINEERS SURVEYORS

781 Science Boulevard ~ Suite 100
Gahanna, Ohio 43230
ph 614.428.7750
fax 614.428.7755