

SURVEY OF ACREAGE PARCELS

QUARTER TOWNSHIP 2, TOWNSHIP 1, RANGE 17

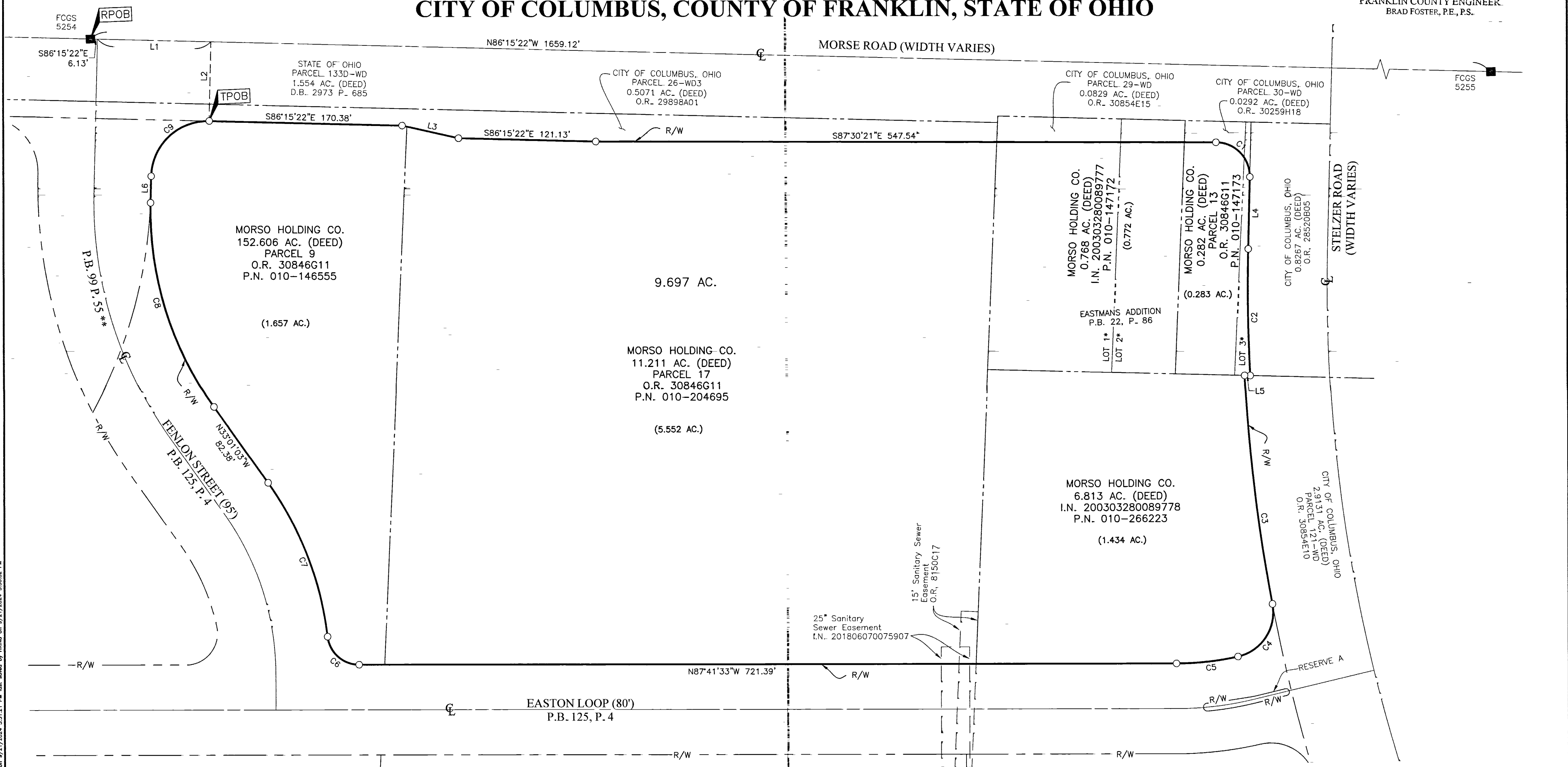
UNITED STATES MILITARY DISTRICT

CITY OF COLUMBUS, COUNTY OF FRANKLIN, STATE OF OHIO

RECEIVED

OCT 21 2024

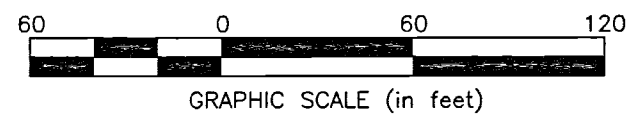
FRANKLIN COUNTY ENGINEER
BRAD FOSTER, P.E., P.S.



NOTE:
* See Franklin County Court of Common Pleas Case No. 06 CVH-17080, as recorded in Instrument Number 200704230070602.

** Portion of Fenlon Street FKA Easton Loop, re-named by Ord. No. 2232-2018

○ Iron Pin Set
■ Monument Found
Iron Pins Set are 13/16" I.D. iron pipes 30" long with cap stamped EMHT INC. Permanent Markers set are one-inch solid iron pins with aluminum cap stamped EMHT INC.



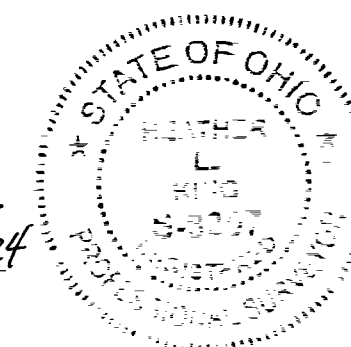
LINE	BEARING	DISTANCE
L1	S86°15'22"E	99.99'
L2	S03°44'38"W	70.00'
L3	S74°56'46"E	50.99'
L4	S03°44'38"W	63.71'
L5	N86°15'22"W	5.01'
L6	N03°44'38"E	23.36'

CURVE	DELTA	RADIUS	ARC	CH. BEARING	CH. DIST.
C1	91°14'59"	30.00'	47.78'	S41°52'52"E	42.89'
C2	4°16'24"	1502.40'	112.05'	S01°36'26"W	112.03'
C3	7°45'00"	1507.40'	203.90'	S04°23'24"E	203.74'
C4	88°02'36"	40.00'	61.47'	S35°45'24"W	55.59'
C5	12°31'45"	250.00'	54.67'	S86°02'34"W	54.56'
C6	83°30'08"	28.00'	40.81'	N45°56'29"W	37.29'
C7	28°49'37"	293.00'	147.42'	N18°36'14"W	145.87'
C8	36°45'41"	300.00'	192.48'	N14°38'12"W	189.20'
C9	90°00'00"	50.00'	78.54'	N48°44'38"E	70.71'

BASIS OF BEARINGS:
The Bearings shown hereon are based on North 02° 18' 27" East for a portion of the centerline of Easton Loop West, of record in Plat Book 99, Page 55, Recorder's Office, Franklin County, Ohio.

SURVEY NOTE:
This survey was prepared using documents of record, prior plats of survey, and observed evidence located by an actual field survey performed in December 2023.

By *Heather L. King* 9/24/24
Heather L. King
Professional Surveyor No. 8307
hking@emht.com



EMHT Evans, Mechwart, Hambleton & Tilton, Inc. Engineers • Surveyors • Planners • Scientists 5500 New Albany Road, Columbus, OH 43054 Phone: 614.775.4500 Toll Free: 888.775.3648 emht.com		Date: September 20, 2024
		Scale: 1" = 60'
		Job No: 2023-0701
		Sheet: 1 of 1
REVISIONS		
MARK	DATE	DESCRIPTION

J:\20240795\DWG\04\SHEETS\BOUNDARY\20240795-VS-BNDY-MSP-6.DWG plotted by KING, HEATHER on 9/21/2024 5:51:21 PM last saved by HKING on 9/21/2024 5:50:52 PM