



Evans, Mechwart, Hambleton & Tilton, Inc.  
 Engineers • Surveyors • Planners • Scientists  
 5500 New Albany Road, Columbus, OH 43054  
 Phone: 614.775.4500 Toll Free: 888.775.3648

emht.com

# SURVEY OF ACREAGE PARCEL

LOT 11, QUARTER TOWNSHIP 3, TOWNSHIP 2, RANGE 19

UNITED STATES MILITARY DISTRICT

CITY OF DUBLIN, COUNTY OF FRANKLIN, STATE OF OHIO

Date: October 11, 2024

Scale: 1" = 100'

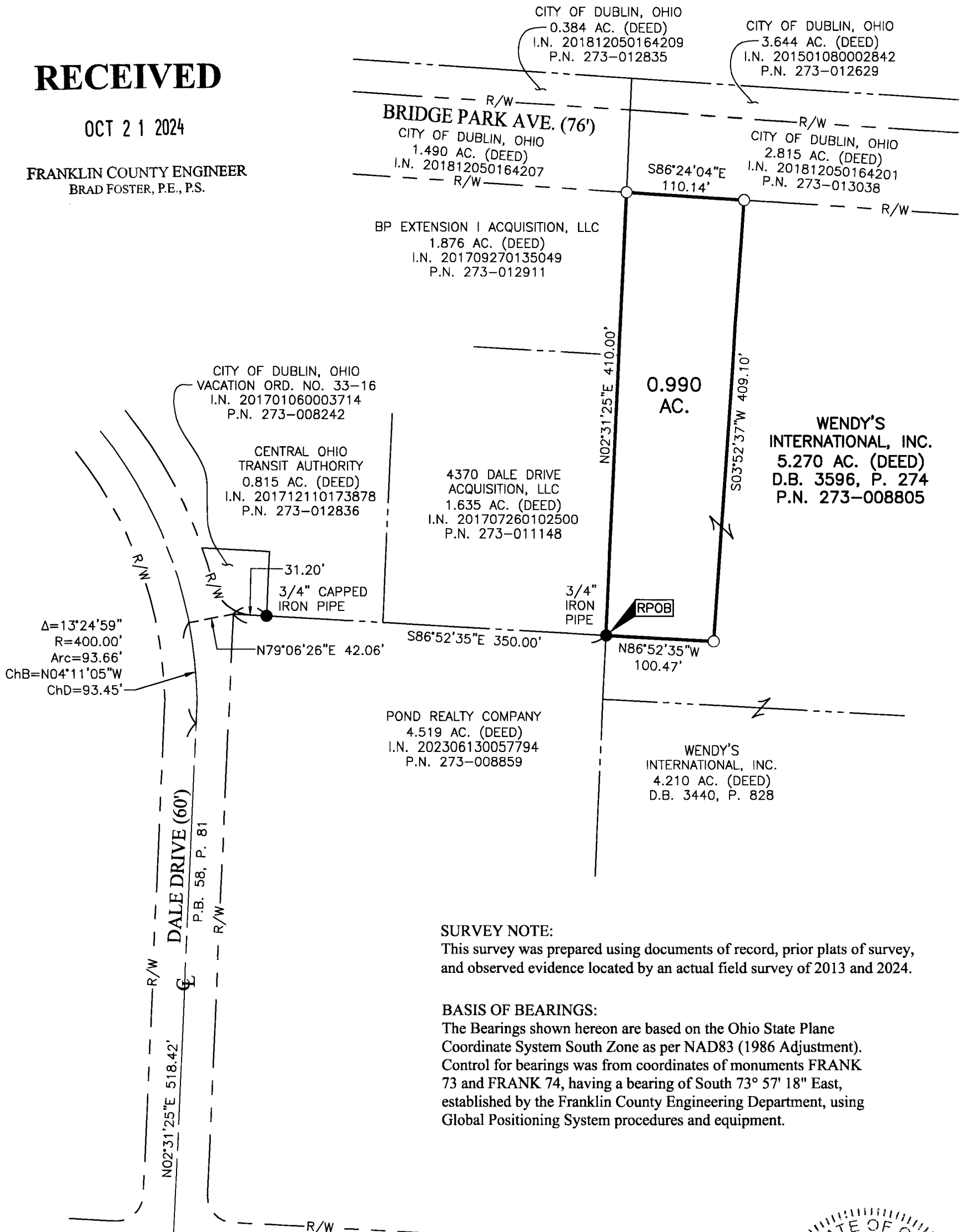
Job No: 2024-0817

Sheet No: 1 of 1

**RECEIVED**

OCT 21 2024

FRANKLIN COUNTY ENGINEER  
 BRAD FOSTER, P.E., P.S.

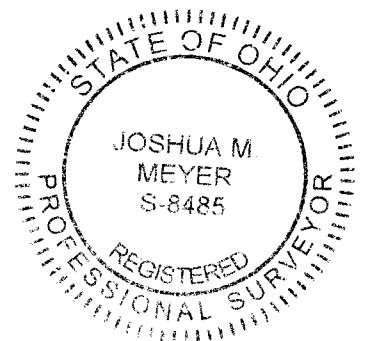


**SURVEY NOTE:**

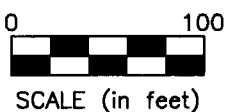
This survey was prepared using documents of record, prior plats of survey, and observed evidence located by an actual field survey of 2013 and 2024.

**BASIS OF BEARINGS:**

The Bearings shown hereon are based on the Ohio State Plane Coordinate System South Zone as per NAD83 (1986 Adjustment). Control for bearings was from coordinates of monuments FRANK 73 and FRANK 74, having a bearing of South 73° 57' 18" East, established by the Franklin County Engineering Department, using Global Positioning System procedures and equipment.



By *Joshua M. Meyer* 10-11-2024  
 Joshua M. Meyer Date  
 Professional Surveyor No. 8485  
 jmeyer@emht.com



Iron Pins Set are 13/16" I.D. iron pipes  
 30" long with cap inscribed EMHT INC.

- Iron Pin Set
- Iron Pin Found
- Stone Found
- ◆ P.K. Nail Found
- Monument Found
- Magnetic Nail Set
- Magnetic Nail Found
- ▲ Railroad Spike Found

J:\20240817\DWG\04SHEETS\BOUNDARY\20240817-VS-BNDY-01.DWG plotted by FERUGSON, DAVID on 10/11/2024 3:01:35 PM last saved by FERUGSON on 10/11/2024 3:01:32 PM