



Evans, Mechwart, Hambleton & Tilton, Inc.
 Engineers • Surveyors • Planners • Scientists
 5500 New Albany Road, Columbus, OH 43054
 Phone: 614.775.4500 Toll Free: 888.775.3648
 emht.com

SURVEY OF ACREAGE PARCEL

LOT 6, QUARTER TOWNSHIP 4, TOWNSHIP 2, RANGE 16

UNITED STATES MILITARY DISTRICT

CITY OF NEW ALBANY, COUNTY OF FRANKLIN, STATE OF OHIO

Date: September 19, 2024

Scale: 1" = 50'

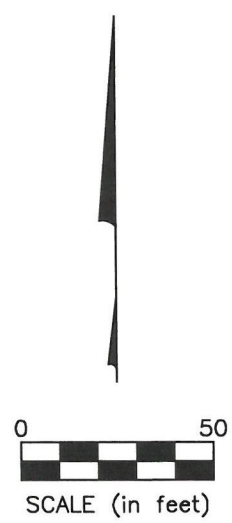
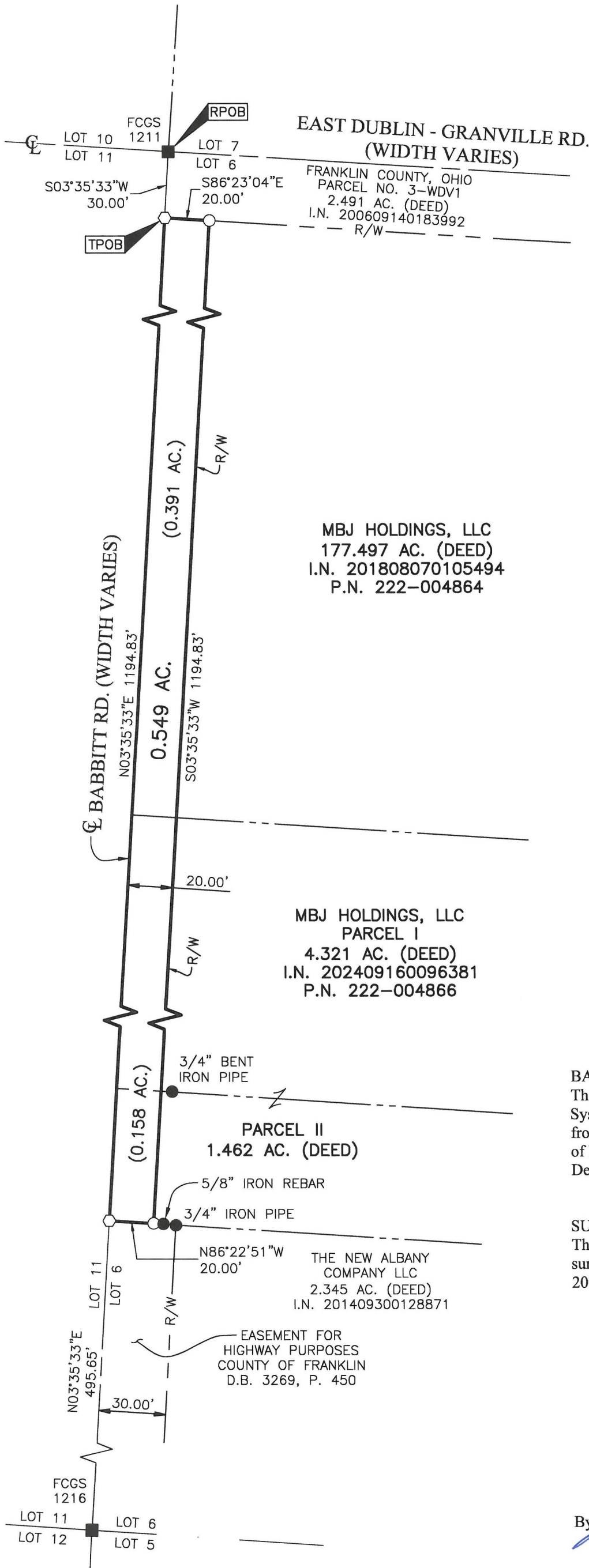
Job No: 2024-0790

Sheet No: 1 of 1

RECEIVED

SEP 23 2024

FRANKLIN COUNTY ENGINEER
 BRAD FOSTER, P.E., P.S.



- Iron Pin Set
- Iron Pin Found
- ⊙ Stone Found
- ◆ P.K. Nail Found
- Monument Found
- ◊ Magnetic Nail Set
- Magnetic Nail Found
- ▲ Railroad Spike Found

Iron Pins Set are 13/16" I.D. iron pipes 30" long with cap inscribed EMHT INC.

BASIS OF BEARINGS:

The bearings shown hereon are based on the Ohio State Plane Coordinate System, South Zone, NAD83 (1986 Adjustment). Control for bearings was from coordinates of monuments Frank 80 and Frank 180, having a bearing of North 85° 57' 24" West, established by the Franklin County Engineering Department, using Global Positioning System procedures and equipment.

SURVEY NOTE:

This survey was prepared using documents of record, prior plats of survey, and observed evidence located by an actual field survey in 1999, 2001, 2002, 2015, 2017, 2018, 2021 and 2024.



By Joshua M. Meyer
 Joshua M. Meyer
 Professional Surveyor No. 8485
 jmeyer@emht.com

9-19-2024
 Date

J:\20240790\DWG\04SHEETS\BOUNDARY_20240790-VS-BNDY-01.DWG plotted by FERGIUSON, DAVID on 9/19/2024 9:46:45 AM last saved by FERGIUSON on 9/19/2024 9:46:42 AM