



Evans, Mechwart, Hambleton & Tilton, Inc.
 Engineers • Surveyors • Planners • Scientists
 5500 New Albany Road, Columbus, OH 43054
 Phone: 614.775.4500 Toll Free: 888.775.3648
 emht.com

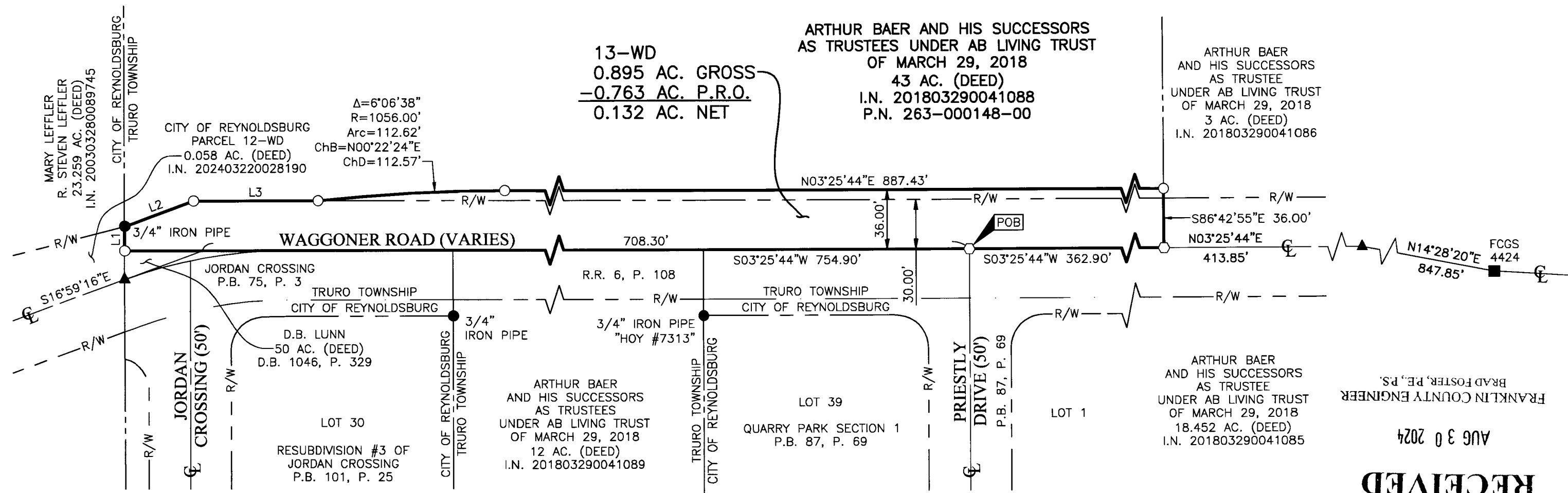
SURVEY OF ACREAGE PARCEL

HALF SECTION 8, SECTION 7, TOWNSHIP 16, RANGE 20

REFUGEE LANDS

TOWNSHIP OF TRURO, COUNTY OF FRANKLIN, STATE OF OHIO

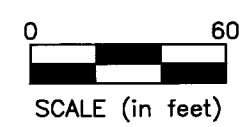
Date: August 16, 2024
 Scale: 1" = 60'
 Job No: 2021-1337
 Sheet No: 1 of 1



FRANKLIN COUNTY ENGINEER
BRAD FOSTER, P.E., P.S.

AUG 30 2024

RECEIVED



- Iron Pin Set
- Iron Pin Found
- Stone Found
- P.K. Nail Found
- Monument Found
- Magnetic Nail Set
- Magnetic Nail Found
- ▲ Railroad Spike Found

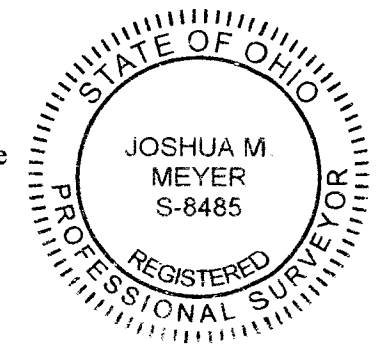
Iron Pins Set are 13/16" I.D. iron pipes
 30" long with cap inscribed EMHT INC.

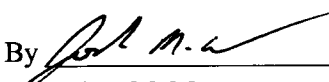
LINE TABLE		
LINE	BEARING	DISTANCE
L1	N86°43'59"W	14.65'
L2	N16°59'16"W	44.01'
L3	N03°25'44"E	76.67'

BASIS OF BEARINGS:
 The Bearings shown hereon are based on the Ohio State Plane Coordinate System South Zone as per NAD83 (NSRS2007). Control for bearings was from coordinates of monuments GLENREST and FRANK48, having a bearing of North 08° 32' 44" East, established by the Franklin County Engineering Department, using G.N.S.S. procedures and equipment.

SURVEY NOTE:
 This survey was prepared using documents of record, prior plats of survey, and observed evidence located by an actual field survey performed in 2022 and 2023.

- REFERENCE:**
- Road Record 6, Page 108 and Roadway Plan titled "Wagoner Road 1937" on file with the Franklin County Engineer.
 - Deeds and Plats of record shown hereon are on file with the Franklin County Recorder.



By  Date 8-16-2024
 Joshua M. Meyer
 Professional Surveyor No. 8485
 jmeyer@emht.com