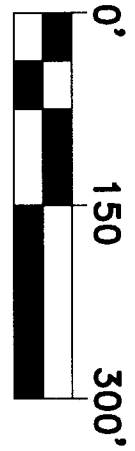


SITE ENGINEERING, INC.
 7453 E. MAIN ST. SUITE 3
 REYNOLDSBURG, OHIO 43068
 PHONE: (614) 759-9900

FRANKLIN COUNTY ENGINEER
 BRAD FOSTER, P.E., P.S.

RECEIVED
 2023 JUL 22 4:20



GRAPHIC SCALE

SCALE: 1"=150'

FILE # 4251
 DATE: NOV 23

NORFOLK & WESTERN
 RAILROAD

Situated in the State of Ohio, County of Franklin, City of Columbus, Half Section 38, S-26, T-5, R-22, Refugee Lands, being 0.507 acres of land all out of that 11.975 acre, Original described in a deed to Weber Holdings-Buckeye, LLC record in Instrument 201611100156239 in the Recorder's Office, Franklin County, Ohio.

WEBER HOLDINGS-ADVANCE, LTD.
 11.741 AC. Orig.
 INST #199912300318433
 PAR #010-112284

WEBER HOLDINGS-ADVANCE, LTD.
 1.3925 AC.
 IN. 200512300274140
 PAR #010-112284

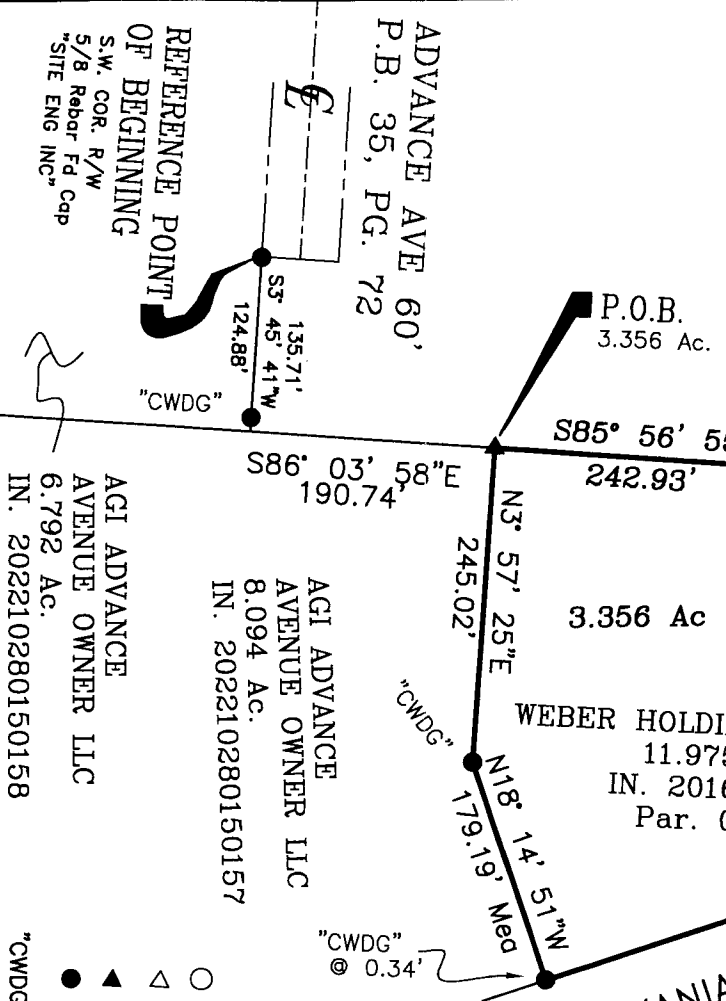
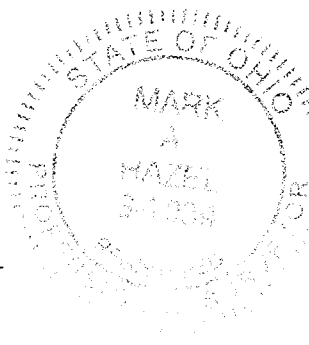
WEBER HOLDINGS-BUCKEYE, LLC
 11.975 AC. Orig.
 IN. 201611100156239
 Par. 010-112503

PENNSYLVANIA LINES LLC
 IN. 200212180325195
 NKA NORFOLK SOUTHERN RAILWAY CO.
 IN. 200710260186473

We do hereby certify that an actual field survey was made of the premises shown on this plat during November, 2023.

SITE ENGINEERING, INC.

By Mark A Hazel, p.s. 12-5-23
 Professional Surveyor No. 7039



LEGEND
 ○ I.P.S. Iron Pin Set
 ▽ Mag Nail Set
 ▲ Mag Nail Fd
 ● 5/8" Rebar Fd, "CAP"
 "CWDC" C.W. Design Group

NOTES:

- 1) Bearings are used for the determination of angles only. For the purpose of this survey a bearing of S71°50'49"W was assumed on the southeasterly line of the 11.975 acre tract, being parallel to the centerline of rails of Pennsylvania Lines LLC and all other bearings were calculated from this meridian.
- 2) The iron pins set (I.P.S.) are 5/8" rebars, 30" long with yellow plastic caps stamped "SITE ENG INC".