



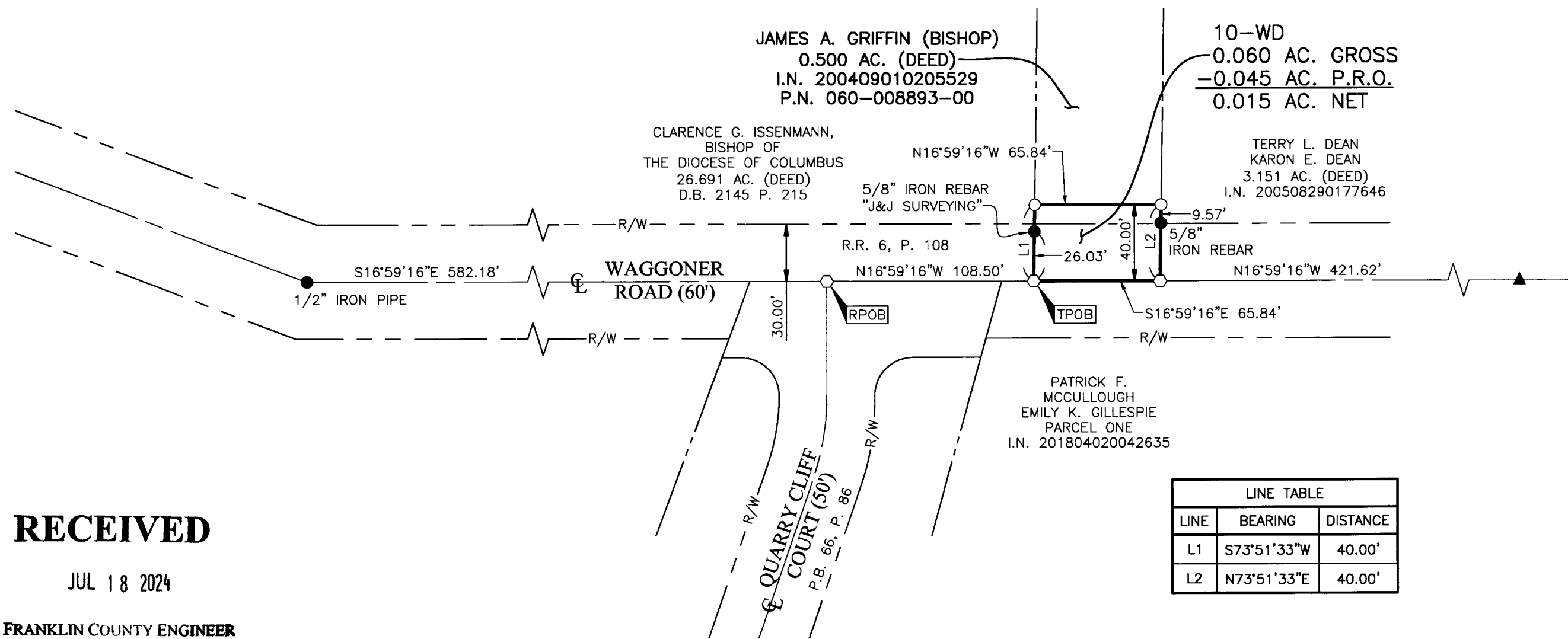
SURVEY OF ACREAGE PARCEL

HALF SECTION 8, SECTION 7, TOWNSHIP 16, RANGE 20

REFUGEE LANDS

CITY OF REYNOLDSBURG, COUNTY OF FRANKLIN, STATE OF OHIO

Date: May 12, 2023
 Scale: 1" = 60'
 Job No: 2021-1337
 Sheet No: 1 of 1



LINE TABLE		
LINE	BEARING	DISTANCE
L1	S73°51'33"W	40.00'
L2	N73°51'33"E	40.00'

RECEIVED

JUL 18 2024

FRANKLIN COUNTY ENGINEER
 BRAD FOSTER, P.E., P.S.

BASIS OF BEARINGS:
 The Bearings shown hereon are based on the Ohio State Plane Coordinate System South Zone as per NAD83 (NSRS2007). Control for bearings was from coordinates of monuments GLENREST and FRANK48, having a bearing of North 08° 32' 44" East, established by the Franklin County Engineering Department, using G.N.S.S. procedures and equipment.

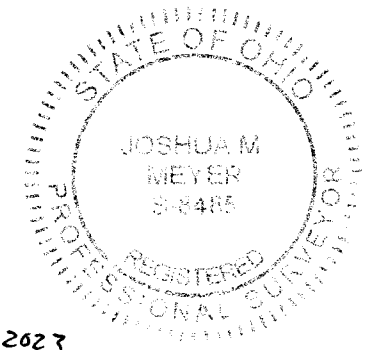
REFERENCE:

- Road Record 6, Page 108 and Roadway Plan titled "Waggoner Road 1937" on file with the Franklin County Engineer.
- Deeds and Plats of record shown hereon are on file with the Franklin County Recorder.

SURVEY NOTE:
 This survey was prepared using documents of record, prior plats of survey, and observed evidence located by an actual field survey performed in 2022 and 2023.

- Iron Pin Set
- Iron Pin Found
- Stone Found
- P.K. Nail Found
- Monument Found
- Magnetic Nail Set
- Magnetic Nail Found
- ▲ Railroad Spike Found

Iron Pins Set are 13/16" I.D. iron pipes 30" long with cap inscribed EMHT INC.



By
 Joshua M. Meyer
 Professional Surveyor No. 8485
 jmeyer@emht.com

May 12, 2023
 Date