



Evans, Mechwart, Hambleton & Tilton, Inc.
 Engineers • Surveyors • Planners • Scientists
 5500 New Albany Road, Columbus, OH 43054
 Phone: 614.775.4500 Toll Free: 888.775.3648
 emht.com

SURVEY OF ACREAGE PARCEL

HALF SECTION 8, SECTION 7, TOWNSHIP 16, RANGE 20

REFUGEE LANDS

CITY OF REYNOLDSBURG, COUNTY OF FRANKLIN, STATE OF OHIO

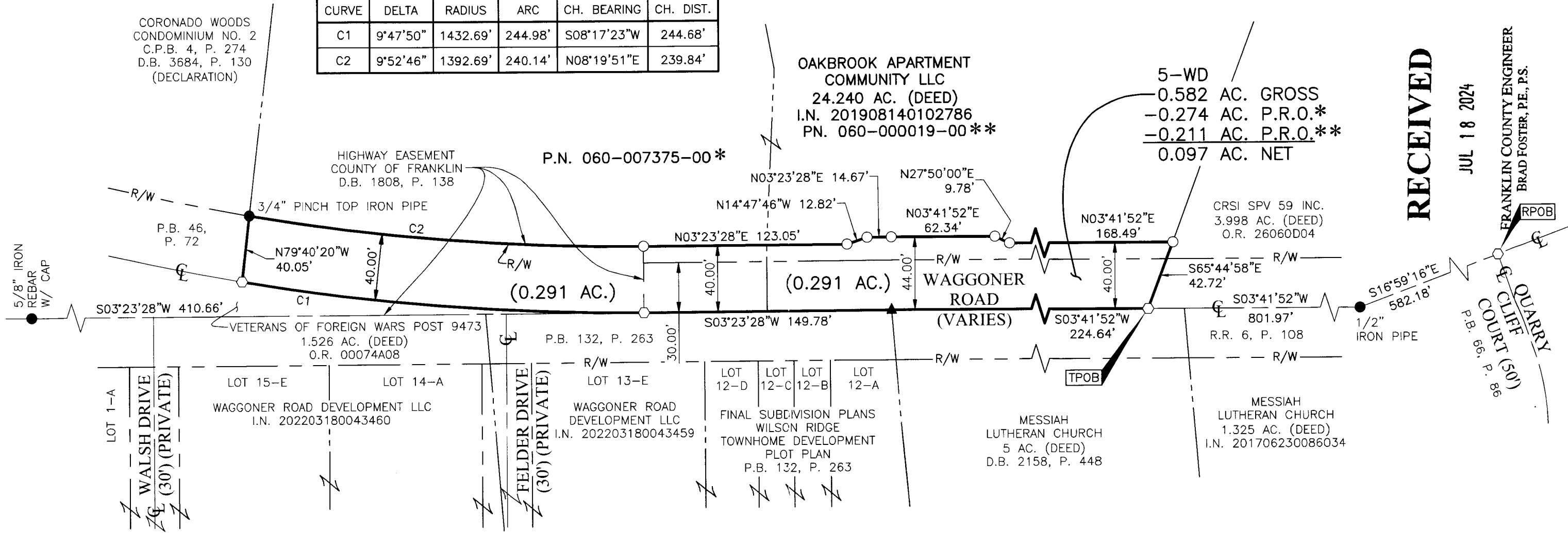
Date: May 10, 2023

Scale: 1" = 60'

Job No: 2021-1337

Sheet No: 1 of 1

CURVE TABLE					
CURVE	DELTA	RADIUS	ARC	CH. BEARING	CH. DIST.
C1	9°47'50"	1432.69'	244.98'	S08°17'23"W	244.68'
C2	9°52'46"	1392.69'	240.14'	N08°19'51"E	239.84'



RECEIVED
 JUL 18 2024
 FRANKLIN COUNTY ENGINEER
 BRAD FOSTER, P.E., P.S.
 RPOB
 QUARRY
 COURT CLIFF
 P.B. 69, P. 89
 (50')

BASIS OF BEARINGS:

The Bearings shown hereon are based on the Ohio State Plane Coordinate System South Zone as per NAD83 (NSRS2007). Control for bearings was from coordinates of monuments GLENREST and FRANK48, having a bearing of North 08° 32' 44" East, established by the Franklin County Engineering Department, using G.N.S.S. procedures and equipment.

REFERENCE:

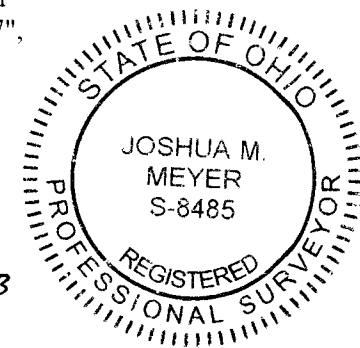
- Road Record 6, Page 108, that Roadway Plan titled "Wagoner Road Sec. "A" dated 1954 and that Roadway Plan titled "Wagoner Road 1937", all on file with the Franklin County Engineer.
- Deeds and Plats of record shown hereon are on file with the Franklin County Recorder.

SURVEY NOTE:

This survey was prepared using documents of record, prior plats of survey, and observed evidence located by an actual field survey performed in 2022 and 2023.

By Joshua M. Meyer
 Professional Surveyor No. 8485
 jmeyer@emht.com

May 10, 2023
 Date



- Iron Pin Set
- Iron Pin Found
- Stone Found
- P.K. Nail Found
- Monument Found
- Magnetic Nail Set
- Magnetic Nail Found
- ▲ Railroad Spike Found

Iron Pins Set are 13/16" I.D. iron pipes 30" long with cap inscribed EMHT INC.

