

THE THOMAS ENGINEERING & SURVEYING COMPANY

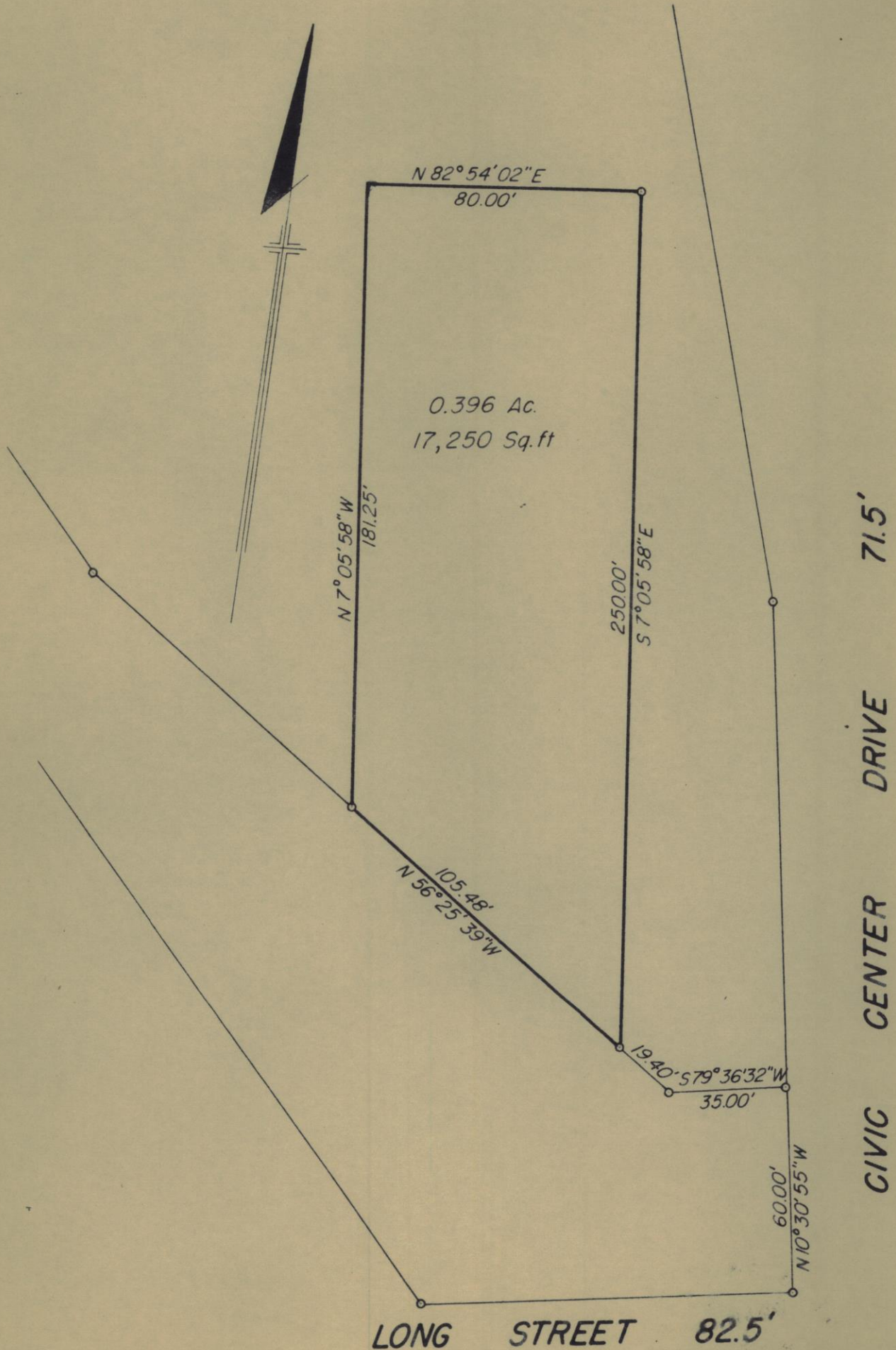
3203 WEST BROAD STREET

COLUMBUS 4, OHIO

ORDER NO. 609-54

PLAT SHOWING EASEMENT (NORTH PART) PARCEL 9
LONG STREET EXPRESSWAY (TEMPLE OF GOODWILL TRACT)
FOR: A. E. STILSON AND ASSOC. LTD.

SCALE 1" = 40'



THE THOMAS ENGINEERING & SURVEYING CO.

Harley B. Watts

Registered Engineer & Surveyor

Checked by H8712 Drawn by