



Evans, Mechwart, Hambleton & Tilton, Inc.
 Engineers • Surveyors • Planners • Scientists
 5500 New Albany Road, Columbus, OH 43054
 Phone: 614.775.4500 Toll Free: 888.775.3648
 emht.com

SURVEY OF ACREAGE PARCEL

HALF SECTION 8, SECTION 7, TOWNSHIP 16, RANGE 20
 REFUGEE LANDS

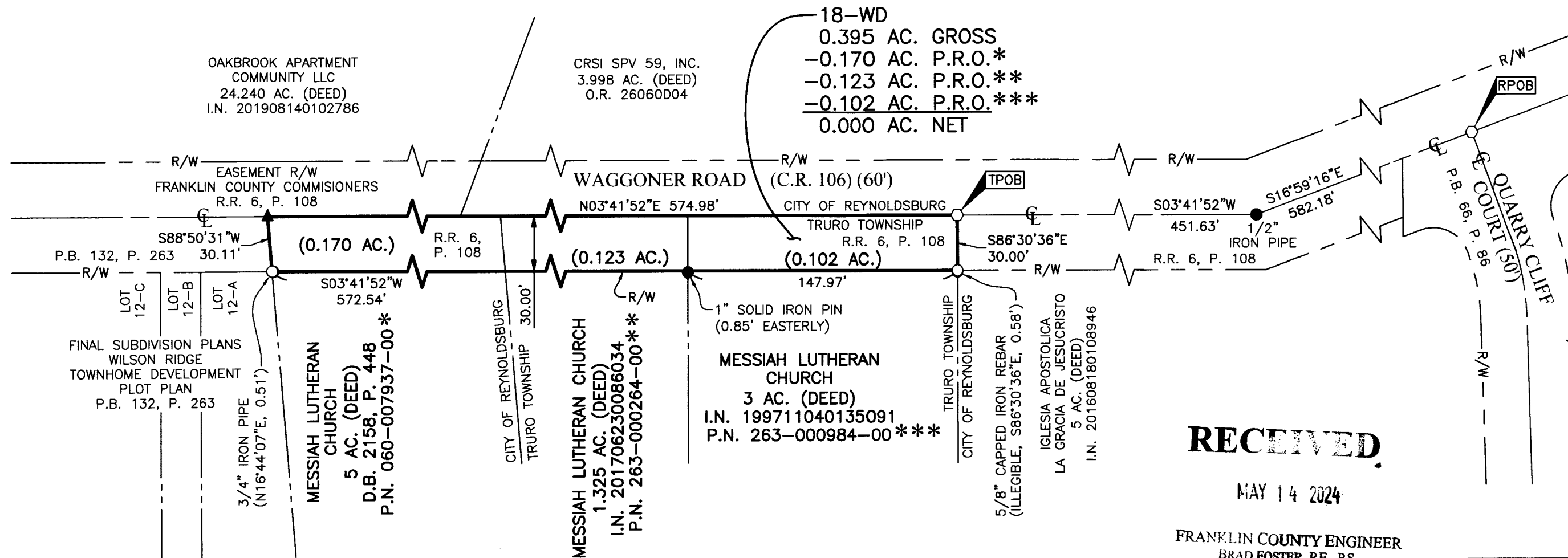
CITY OF REYNOLDSBURG AND TOWNSHIP OF TRURO, COUNTY OF FRANKLIN, STATE OF OHIO

Date: February 8, 2024

Scale: 1" = 60'

Job No: 2021-1337

Sheet No: 1 of 1



RECEIVED

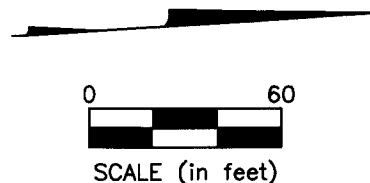
MAY 14 2024

FRANKLIN COUNTY ENGINEER
 BRAD FOSTER, P.E., P.S.

PRELIMINARY APPROVAL
 Cornell R. Robertson P.E., P.S.
 BY: jhorner
 02/09/2024
 PENDING ORIGINALS
 Please return this approval along with the original description and plat of survey as prepared by the surveyor, signed, sealed and dated in blue ink.

- Iron Pin Set
- Iron Pin Found
- Stone Found
- P.K. Nail Found
- Monument Found
- Magnetic Nail Set
- Magnetic Nail Found
- ▲ Railroad Spike Found

Iron Pins Set are 13/16" I.D. iron pipes
 30" long with cap inscribed EMHT INC.



BASIS OF BEARINGS:

The Bearings shown hereon are based on the Ohio State Plane Coordinate System South Zone as per NAD83 (NSRS2007). Control for bearings was from coordinates of monuments GLENREST and FRANK48, having a bearing of North 08° 32' 44" East, established by the Franklin County Engineering Department, using G.N.S.S. procedures and equipment.

SURVEY NOTE:

This survey was prepared using documents of record, prior plats of survey, and observed evidence located by an actual field survey performed in 2022 and 2023.

REFERENCE:

- Road Record 6, Page 108 and Roadway Plan titled "Wagoner Road 1937" on file with the Franklin County Engineer.
- Deeds and Plats of record shown hereon are on file with the Franklin County Recorder.

By *Joshua M. Meyer*
 Joshua M. Meyer
 Professional Surveyor No. 8485
 jmeyer@emht.com

2-8-2024
 Date

