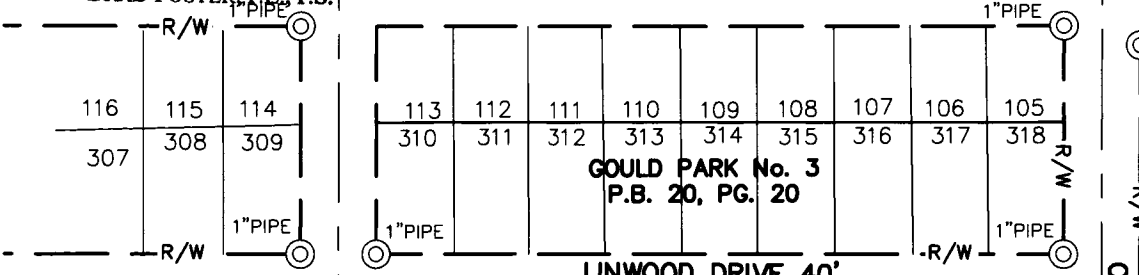


RECEIVED

APR 22 2024

FRANKLIN COUNTY ENGINEER  
BRADFOSTER, P.E., P.S.

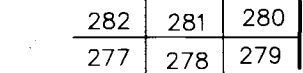
WYANDOTTE DRIVE 40'



LINWOOD DRIVE 40'

(UNIMPROVED) (DED. P.B. 20, PG. 20)

GOULD PARK No. 2  
P.B. 19, PG. 31



LLEWELLYN ROAD 40'  
(DED. P.B. 19, PG. 31)

PLACE OF BEGINNING

CLARK DUANE BALTZELL  
O.R.V. 4097, PG. 103  
EXHIBIT A \*  
GLORIA J. ZAHAROFF  
I.N. 201607120088603  
TRACT 1  
P.N. 600-155355

S86°00'29"E 360.00'

BON-AIR DRIVE 40'

(UNIMPROVED) (DED. P.B. 20, PG. 20)

N86°00'29"W 360.00'

N3°59'31"E  
40.00'

PLACE OF BEGINNING

CLARK DUANE BALTZELL  
O.R.V. 4097, PG. 103  
TRACT (LOTS 355-365) \*  
GLORIA J. ZAHAROFF  
I.N. 201607120088603  
TRACT 2

N3°59'31"E 50.00'

S86°01'29"E 360.00'

SOUTH PARK DRIVE 50'

(UNIMPROVED) (DED. P.B. 20, PG. 20)

N86°01'29"W 360.00'

CLARK DUANE BALTZELL - O.R.V. 4097, PG. 103 \*  
GLORIA J. ZAHAROFF - I.N. 201607120088603 \*  
TRACT 3

COTTAGE STREET 40' (UNIMPROVED) (DED. P.B. 20, PG. 20)

ANDREW L. REINHART  
LOT 367

STATE OF OHIO, COUNTY OF FRANKLIN,  
CITY OF COLUMBUS  
QUARTER TOWNSHIP 4, TOWNSHIP 2, RANGE 17,  
UNITED STATE MILITARY DISTRICT

LEGEND

- ⊙ IRON PIN FOUND (AS NOTED)
- MAG NAIL FOUND
- IRON PIN SET 5/8" REBAR 30" LONG "IBI GROUP S-6872/S-7740"

ACREAGE SUMMARY

BON-AIR DRIVE 0.331 ACRE  
SOUTH PARK DRIVE 0.413 ACRE  
0.744 ACRE

BEARING REFERENCE

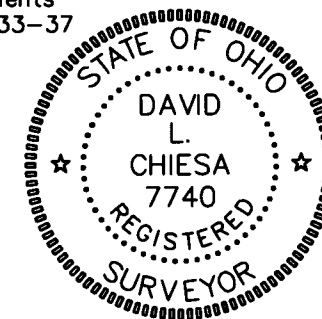
BEARINGS HEREIN ARE BASED ON THE OHIO STATE PLANE COORDINATE SYSTEM, SOUTH ZONE, AND NAD 1983 (2011) AND ESTABLISHES A BEARING OF SOUTH 86°00'29" EAST FOR THE NORTHERLY RIGHT OF WAY LINE FOR LINWOOD DRIVE.

CERTIFICATION

I hereby certify that the information shown hereon was derived from field measurements and meets the requirements of OAC 4733-37 as setforth therein.

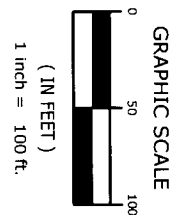
BY *David L. Chiesa*  
David L. Chiesa  
Registered Surveyor No. 7740

Date: 3/07/24



**ARCADIS**  
8101 North High Street, Suite 100  
Columbus OH 43235 USA  
tel 614 818 4900 fax 614 818 4901  
arcadis.com

BON-AIR DRIVE  
SOUTH PARK DRIVE  
EXHIBIT  
COLUMBUS, OHIO



\*LOTS 319 THROUGH 365, IN GOULD PARK No. 3 ARE VACATED BY MISC. REC. 132, PG. 164

CITY OF COLUMBUS OHIO  
89.531 ACRES  
CHERRYBOTTOM PARK NORTH