

Z:\22-0245-65\DWG\PRODUCTION DRAWINGS\SURVEY\22-0245-65 rw drop (rev 2-14-24).dwg Page 1 Feb 20, 2024 - 8:43:56am bkarshner

EXHIBIT-A (P. 3/3)

Section 1 Twp. 2 Range 17  
Section 15 Twp. 2 Range 16  
RPOB  
6611  
Reset  
Section 4 Twp. 2 Range 17  
Section 3 Twp. 2 Range 16

Stone City Storage LLC  
I.N. 202305050043918  
Orig. 0.728 Ac.  
APN: 220-000494

City of Columbus, Ohio  
I.N. 201206190087128  
Parcel 24-WD  
0.094 Ac.

City of Columbus, Ohio  
I.N. 201208170120561  
Parcel 23-WD  
0.164 Ac.

City of Columbus, Ohio  
I.N. 201205300075632  
Parcel 22-WD  
0.164 Ac.

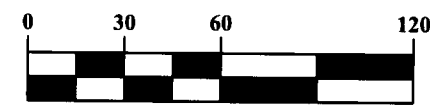
City of Columbus, Ohio  
I.N. 200912040175326  
0.034 Ac.

City of Columbus, Ohio  
I.N. 201003120029574  
0.011 Ac.

**LEGEND**

- Rebar Found
- Iron Pipe Found
- [M] Monument Found
- Iron Pin Set

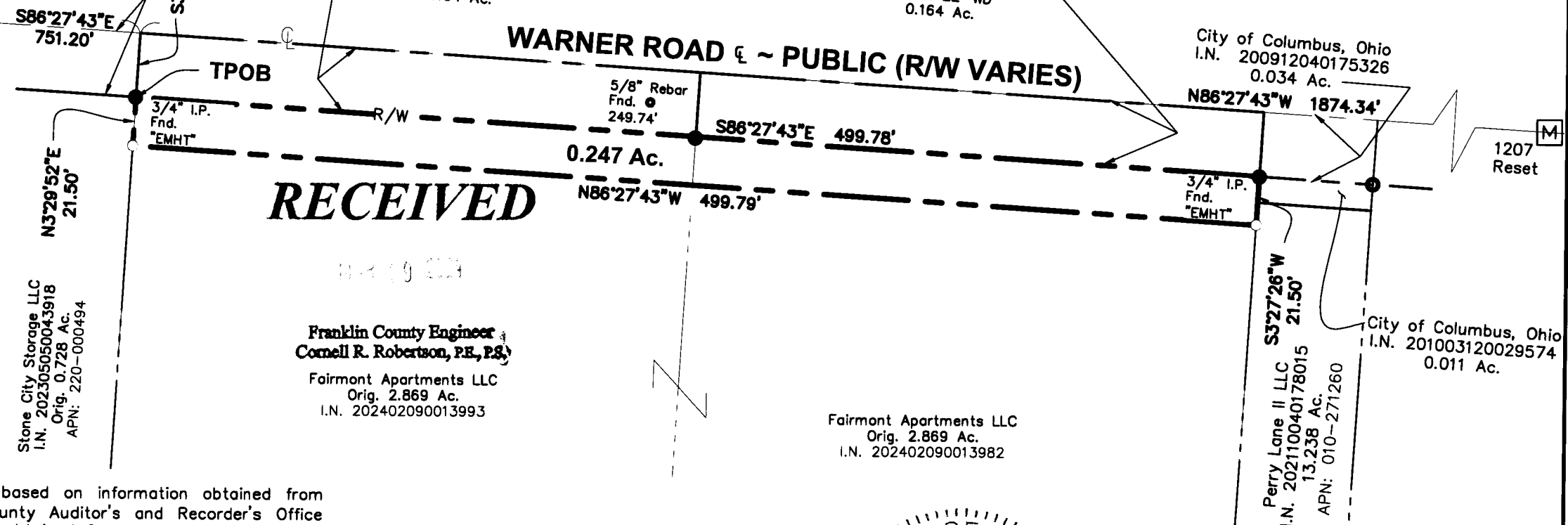
**GRAPHIC SCALE**



1 inch = 60 feet

**Parcel Exhibit**  
**0.247 Acres**

City of Columbus, Franklin County, Ohio  
Section 3, Township 2 Range 16  
United States Military Lands



**RECEIVED**

Franklin County Engineer  
**Cornell R. Robertson, PE, PS**  
Fairmont Apartments LLC  
Orig. 2.869 Ac.  
I.N. 202402090013993

Fairmont Apartments LLC  
Orig. 2.869 Ac.  
I.N. 202402090013982

This exhibit is based on information obtained from the Franklin County Auditor's and Recorder's Office and information obtained from an actual field survey conducted in January of 2023.

The basis of bearings used for this exhibit are based on the NAD83 Ohio State Plane Coordinate System, South Zone (NSRS 2011) which determines the bearing for a portion of the centerline of Warner to be S86°27'43"E between Franklin County Monuments 6611 Reset and 1207 Reset.

Iron pins set are 5/8" diameter rebar, 30" long and capped Advanced 7661.

ADVANCED CIVIL DESIGN, INC.

*[Signature]*  
Date: 2/26/24  
Douglas R. Hock, P.S. 7661



DRAWN BY: BCK	JOB NO.: 22-0245-65
DATE: 02/14/2024	CHECKED BY: DRB

**ADVANCED CIVIL DESIGN ENGINEERS**

781 SCIENCE BOULEVARD, SUITE 100  
Gahanna, Ohio 43230  
ph 614.428.7750  
fax 614.428.7755