

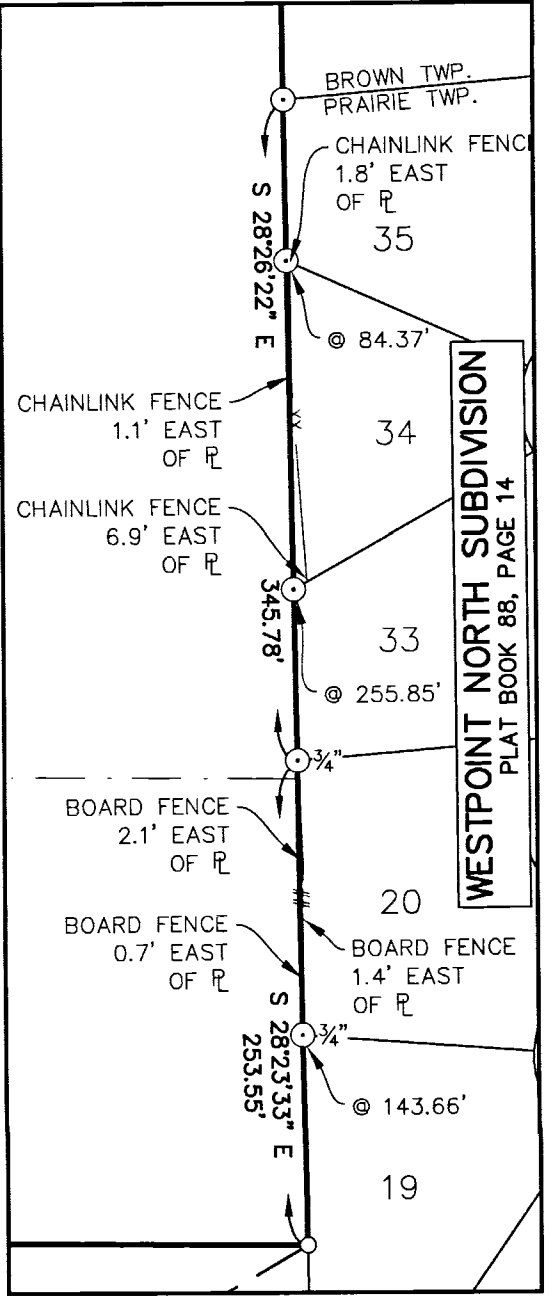
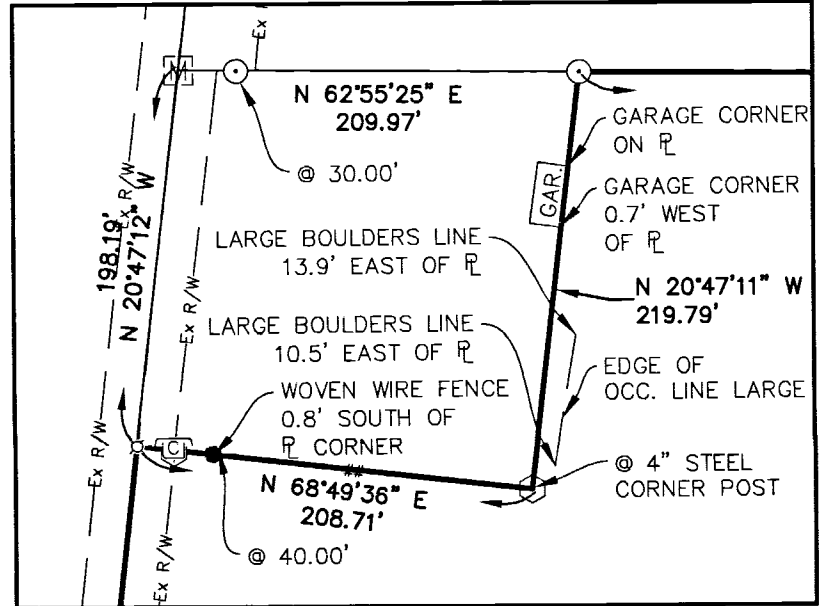
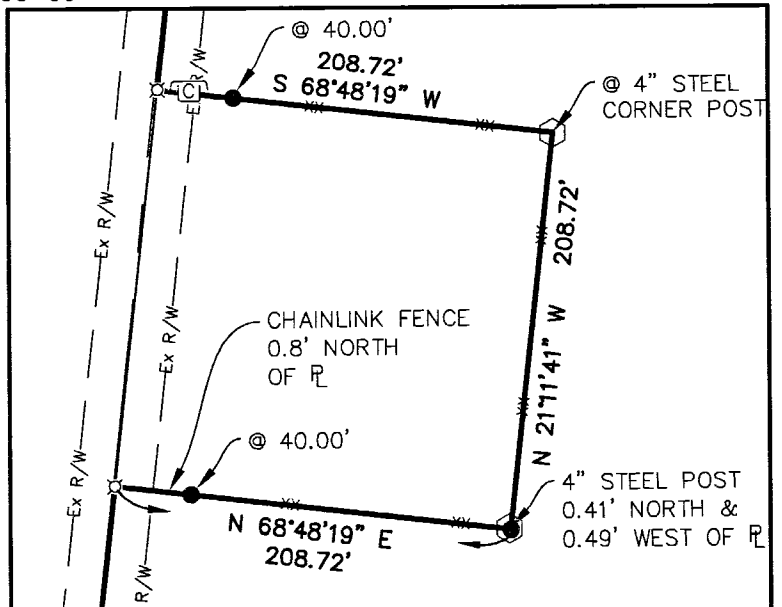
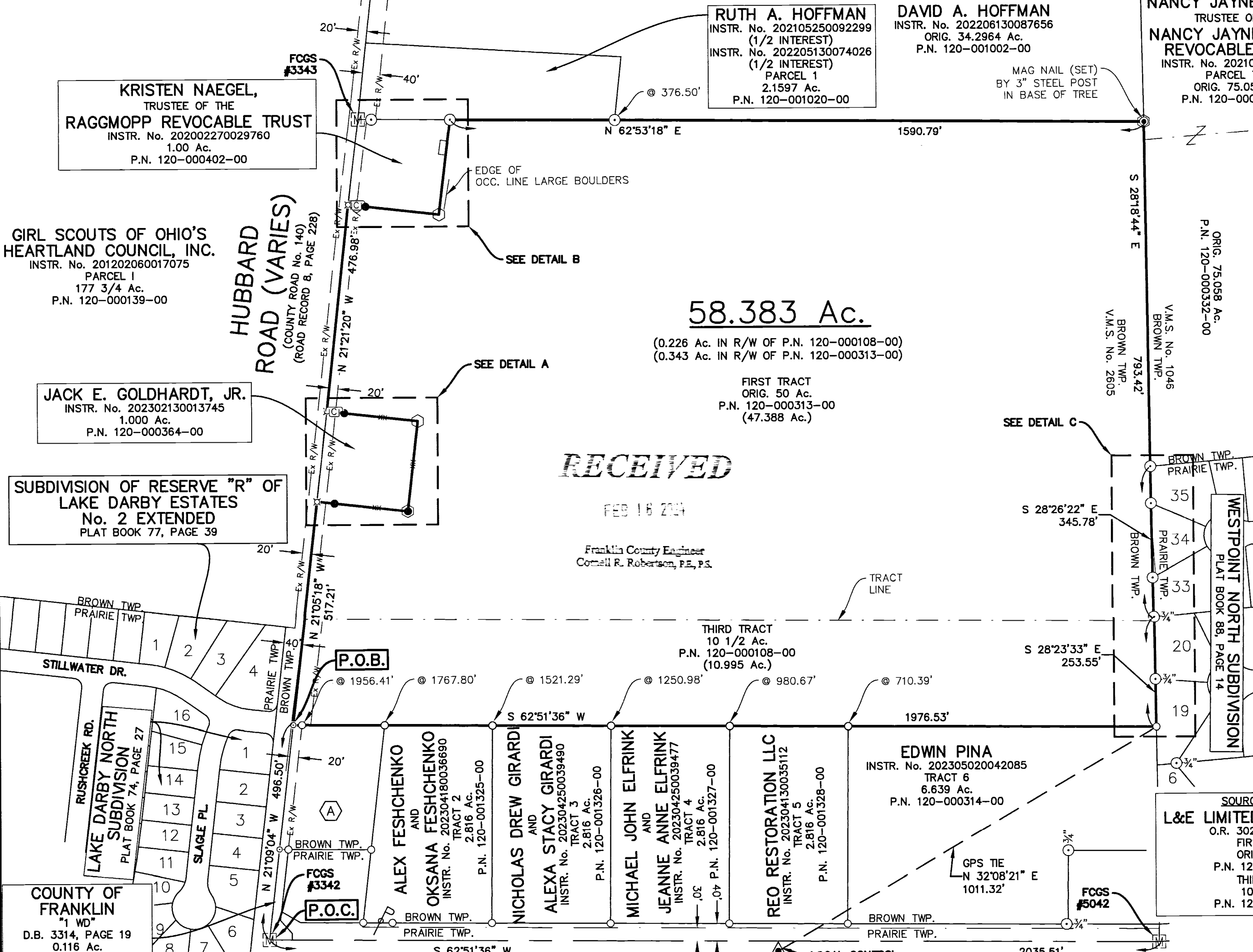
NAME	NATIONAL GEODETIC SURVEY CONTROL MONUMENTS NAD 83 (2011) LATITUDE	ELLIPSOID LONGITUDE	OHIO STATE PLANE COORDINATES HEIGHT NORTHING	EASTING	NAVD 88 ELEVATION
COLUMBUS CORS (COLB)	39°57'35.11255"N	83°02'44.74694"W	611.603 714254.2703	1815510.6865	611.603
	RESIDUALS		ΔH = 0.000 SFT	ΔV =	-
LOCAL CONTROL MONUMENT "2001" LOCAL SITE SETTINGS					
LOCAL CONTROL MONUMENT "2001"	39°57'59.54063"N	83°13'57.35111"W	812.234 717096.763	1763157.948	921.177
	GROUND SCALE FACTOR: 1.00005137058622	GEOID MODEL: GEOID18 (CONUS)	LOCAL GROUND COORDINATES NORTHING EASTING	NAVD 88 ELEVATION	
			717096.763 1763157.948	921.177	
			UNITS ARE IN U.S. SURVEY FEET (SFT)		

BEARINGS ARE BASED UPON THE GRID AZIMUTH (AZ. 273° 06' 28.2") BETWEEN NATIONAL GEODETIC SURVEY CORS STATION "COLB" AND MCCARTY ASSOCIATES LOCAL CONTROL MONUMENT "2001" AND DERIVED FROM GPS OBSERVATIONS TAKEN APRIL 13, 2022, UTILIZING THE ODOT OHIO REAL TIME NETWORK (TRIMBLE VIRTUAL REFERENCE SYSTEM). (TRIMBLE FILE 22764 04-18-22)

WITH A LOCALIZED BEARING OF S 62°51'36" W OF THE CENTERLINE OF DELLINGER ROAD TWP. R.R. 1, PAGES 258-263 BETWEEN FRANKLIN COUNTY CENTERLINE MONUMENTS FCGS #5042 AND FCGS #3342.

SARAH HARRINGTON
AND
ERIC HARRINGTON
INSTR. No. 202308250087530
TRACT 1
2.084 Ac.
P.N. 120-001324-00

VOLUME _____ PLAT NO. _____
FRANKLIN COUNTY ENGINEER'S
RECORD OF LAND SURVEYS
DATE FEBRUARY 6, 2024
SCALE 1"=200'
DEED REFERENCE
OFFICIAL RECORD 30277 PAGE B05
TOWNSHIP BROWN
MILITARY SURVEY NUMBER 2605



SOURCE OF TITLE:
L&E LIMITED CORPORATION
O.R. 30277, PAGE B05
FIRST TRACT
ORIG. 50 Ac.
P.N. 120-000313-00
THIRD TRACT
10 1/2 Ac.
P.N. 120-000108-00



I HEREBY CERTIFY THIS TO BE A PLAT OF A SURVEY MADE UNDER MY DIRECTION IN APRIL, 2022 & DECEMBER OF 2023.

Jason C. McConnaughey 2-15-24
DATE
JASON C. MCCONNAUGHEY, P.S. 8509

BOUNDARY SURVEY FOR
L&E LIMITED CORP.
BROWN TOWNSHIP
FRANKLIN COUNTY, OHIO
V.M.S. No. 2605



213 N. High St. Hillsboro, Oh 45133
937.393.9971 937.393.2480
MCCARTYASSOCIATES.COM

DATE	SCALE	PROJECT NO.
FEBRUARY 6, 2024	1"=200'	S22-764A

22764A Survey Plat