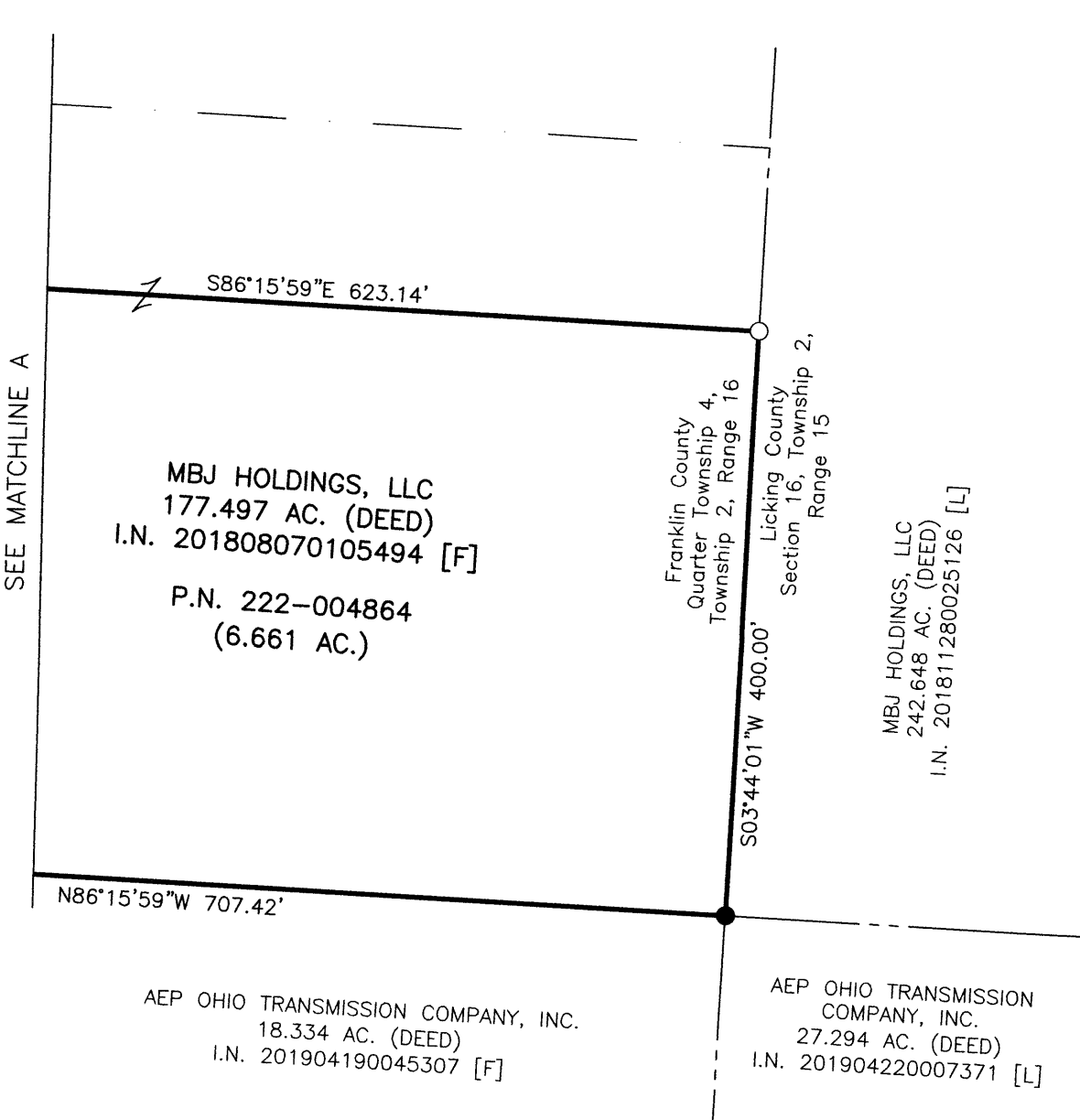
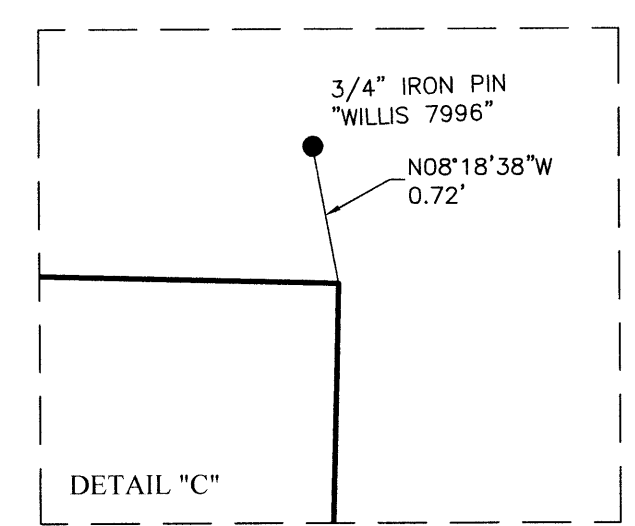
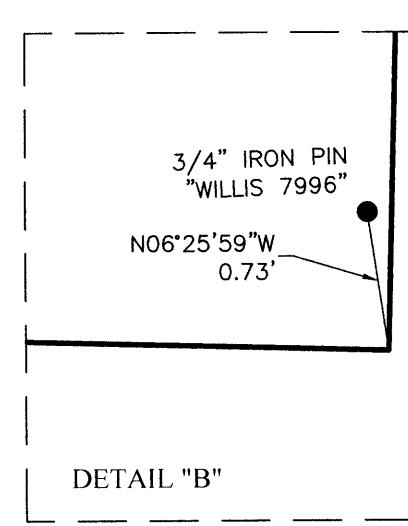
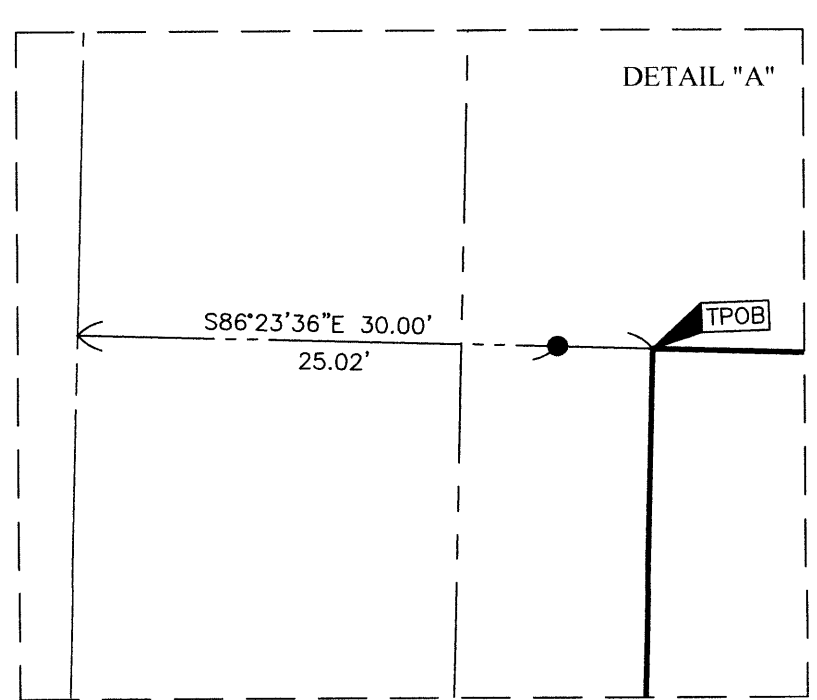
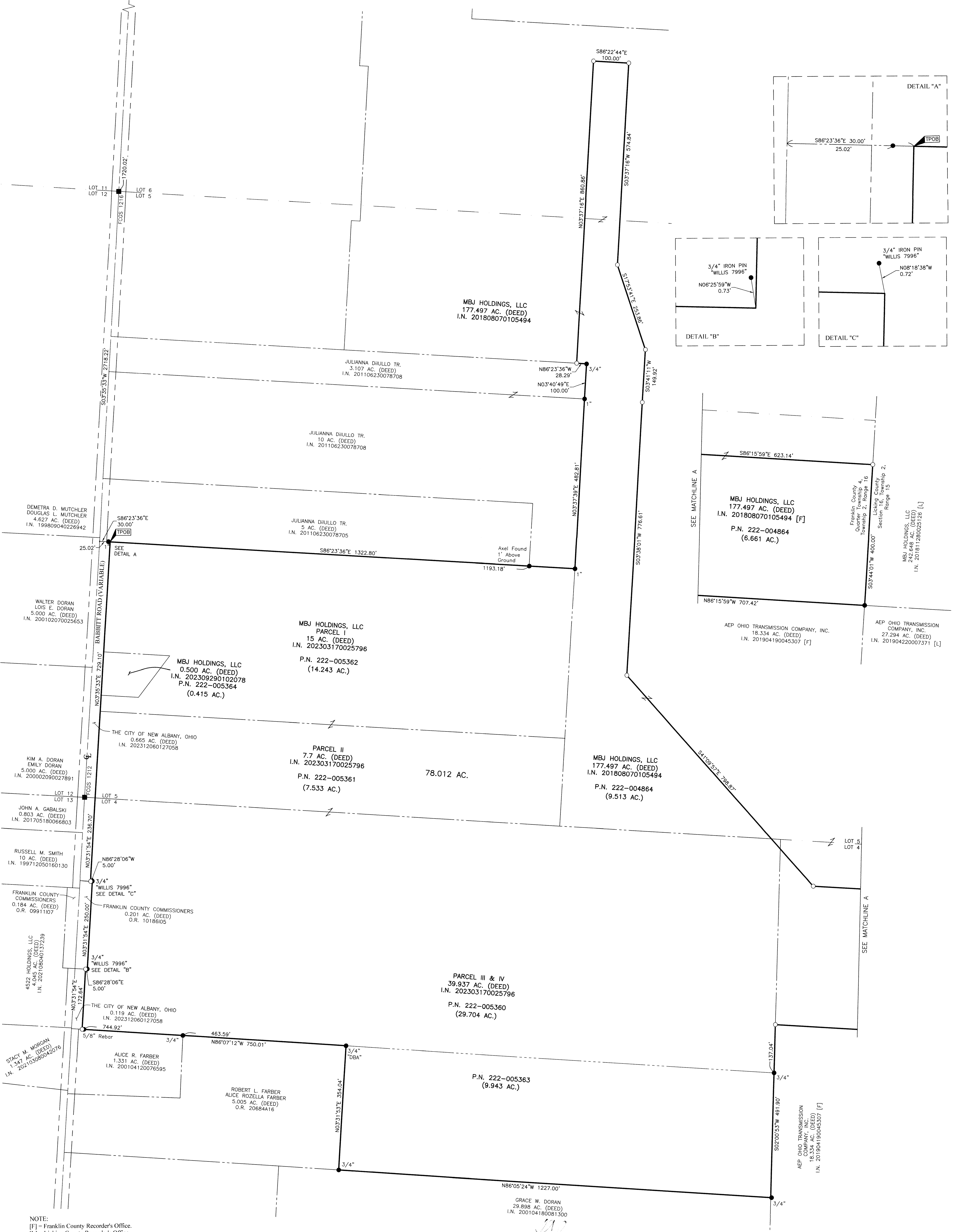
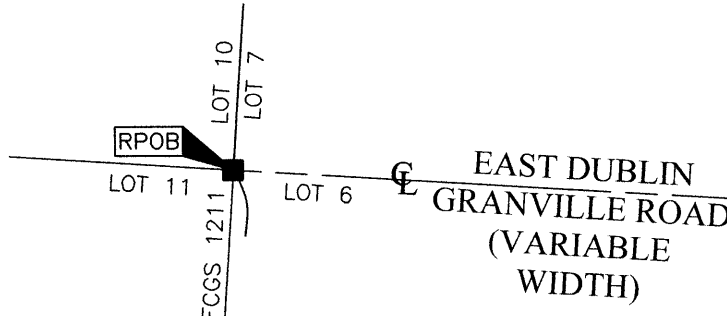


SURVEY OF ACREAGE PARCELS

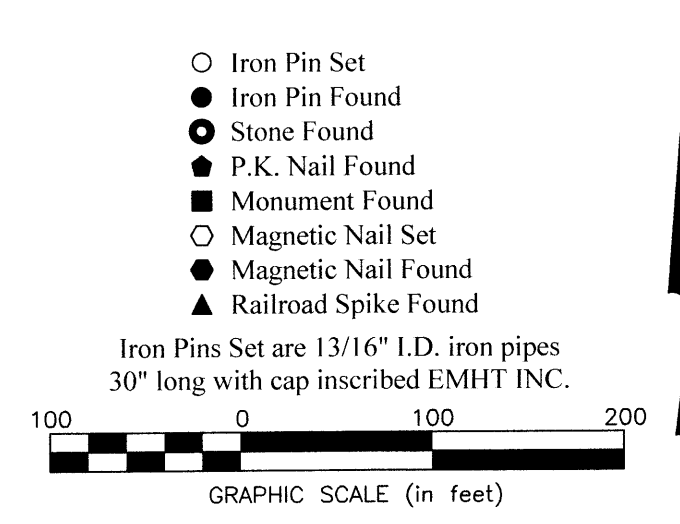
QUARTER TOWNSHIP 4, TOWNSHIP 2, RANGE 16

UNITED STATES MILITARY DISTRICT

CITY OF NEW ALBANY, COUNTY OF FRANKLIN, STATE OF OHIO



NOTE:
[F] = Franklin County Recorder's Office.
[L] = Licking County Recorder's Office.



BASIS OF BEARINGS:
The bearings shown herein are based on the Ohio State Plane Coordinate System, South Zone, NAD83 (1986 Adjustment). Control for bearings was from coordinates of monuments FRANK80 and FRANK180, having a bearing of North 85° 57' 24" West, as established by the Franklin County Engineering Department using Global Positioning System procedures and equipment.

SURVEY NOTE:
This survey was prepared using documents of record, prior plats of survey, and observed evidence located by an actual field survey performed in May, 2023.

By: *Heather L. King* Date: *6/1/23*
Heather L. King
Professional Surveyor No. 8307
hking@emht.com

EMHT Evens, Mechwart, Hambleton & Tillon, Inc. Engineers • Surveyors • Planners • Scientists 5500 New Albany Road, Columbus, OH 43054 Phone: 614.775.4500 Toll free: 888.775.3648 emht.com			Date: June 1, 2023
Scale: 1" = 100'			Job No: 2023-0403
Sheet: 1 of 1			REVISIONS
MARK	DATE	DESCRIPTION	
HLK	9/29/23	Corrected conveyance data for 0.500 acre tract	