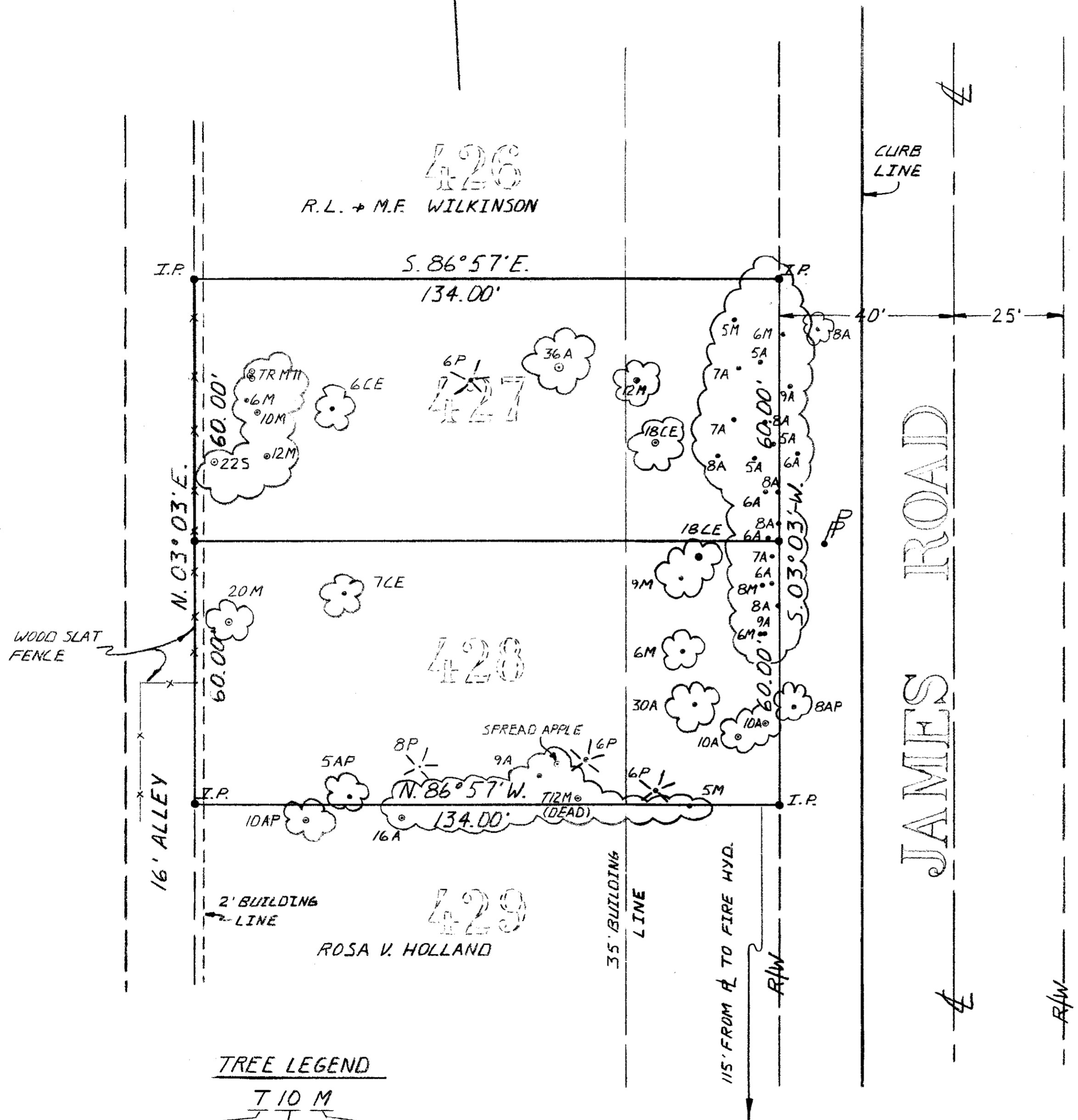


1" = 20'



SURVEY
OF
97+105 S. JAMES RD.
LOTS 427+428 EASTMOOR
ADDITION
CITY OF COLUMBUS
FRANKLIN COUNTY, OHIO

THIS PLAT WAS PREPARED FROM AN ACTUAL
FIELD SURVEY MADE BY PAUL K. MOORE ON
OCTOBER 11, 1984.

Paul K. Moore 10/16/84
PAUL K. MOORE REG. SURV. 5883 DATE



NOT
REVIEWED

TREE LEGEND

-SINGLE	SIZE	TYPE
T-TWIN	CALIPER (IN.)	A-ASH
TR-TRIPLE		AP-APPLE
		CE-CHINESE ELM
		M-MAPLE
		S-SYCAMORE
		P-PINE

TOLERANCES (EXCEPT AS NOTED)	REVISIONS			PAUL K. MOORE & ASSOC.		
DECIMAL	NO.	DATE	BY	1839 STOLDER DRIVE REYNOLDSBURG, OHIO		
±	1			DRAWN BY VPL SCALE 1"=20' MATERIAL		
FRACTIONAL	2			DATE 10-15-84 DRAWING NO.		
±	3			TRACED APP'D 841024		
ANGULAR	4					
±	5					