



Evans, Mechwart, Hambleton & Tilton, Inc.  
 Engineers • Surveyors • Planners • Scientists  
 5500 New Albany Road, Columbus, OH 43054  
 Phone: 614.775.4500 Toll Free: 888.775.3648

emht.com

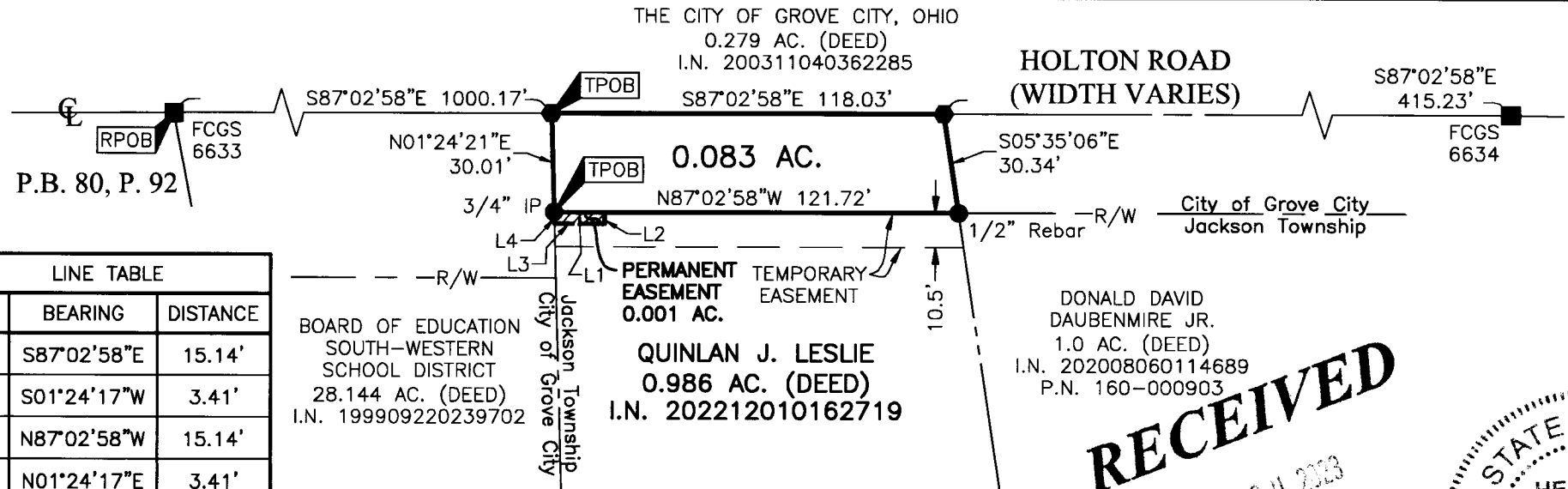
# SURVEY OF ACREAGE PARCEL

VIRGINIA MILITARY DISTRICT SURVEY NUMBER 6840  
 CITY OF GROVE CITY, COUNTY OF FRANKLIN, STATE OF OHIO

Date: February 14, 2023

Scale: 1" = 50'

Job No: 2019-0227



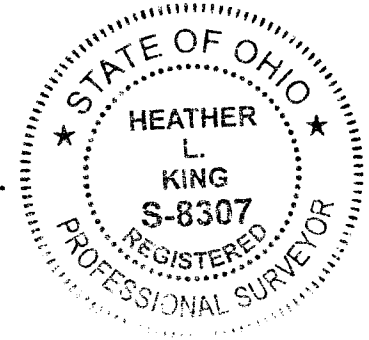
LINE TABLE		
LINE	BEARING	DISTANCE
L1	S87°02'58"E	15.14'
L2	S01°24'17"W	3.41'
L3	N87°02'58"W	15.14'
L4	N01°24'17"E	3.41'

BOARD OF EDUCATION  
 SOUTH-WESTERN  
 SCHOOL DISTRICT  
 28.144 AC. (DEED)  
 I.N. 199909220239702

QUINLAN J. LESLIE  
 0.986 AC. (DEED)  
 I.N. 202212010162719

DONALD DAVID  
 DAUBENMIRE JR.  
 1.0 AC. (DEED)  
 I.N. 202008060114689  
 P.N. 160-000903

**RECEIVED**  
 DEC 20 2023



Franklin County Engineer  
 Cornell R. Robertson, P.E., P.S.

- = MON. FND.
- = I.P. FND.
- = I.P. SET
- = MAG. NAIL SET

I.P. Set are 13/16" I.D. iron pipes  
 30" long with cap inscribed EMHT INC.



GRAPHIC SCALE (in feet)

**BASIS OF BEARINGS:**

The bearings are based on the Ohio State Plane Coordinate System, South Zone, per NAD83 (1986 adjustment). Control for bearings was from coordinates of monuments FCGS 5548 and FCGS 5539, having a bearing of North 00° 21' 40" East for a portion of the centerline of Hoover Road, established by the Franklin County Engineering Department.

**SURVEY NOTE:**

This survey was prepared using documents of record, prior plats of survey, and observed evidence located by an actual field survey.

By Heather L. King 3/20/23  
 Heather L. King Date  
 Professional Surveyor No. 8307  
 hking@emht.com