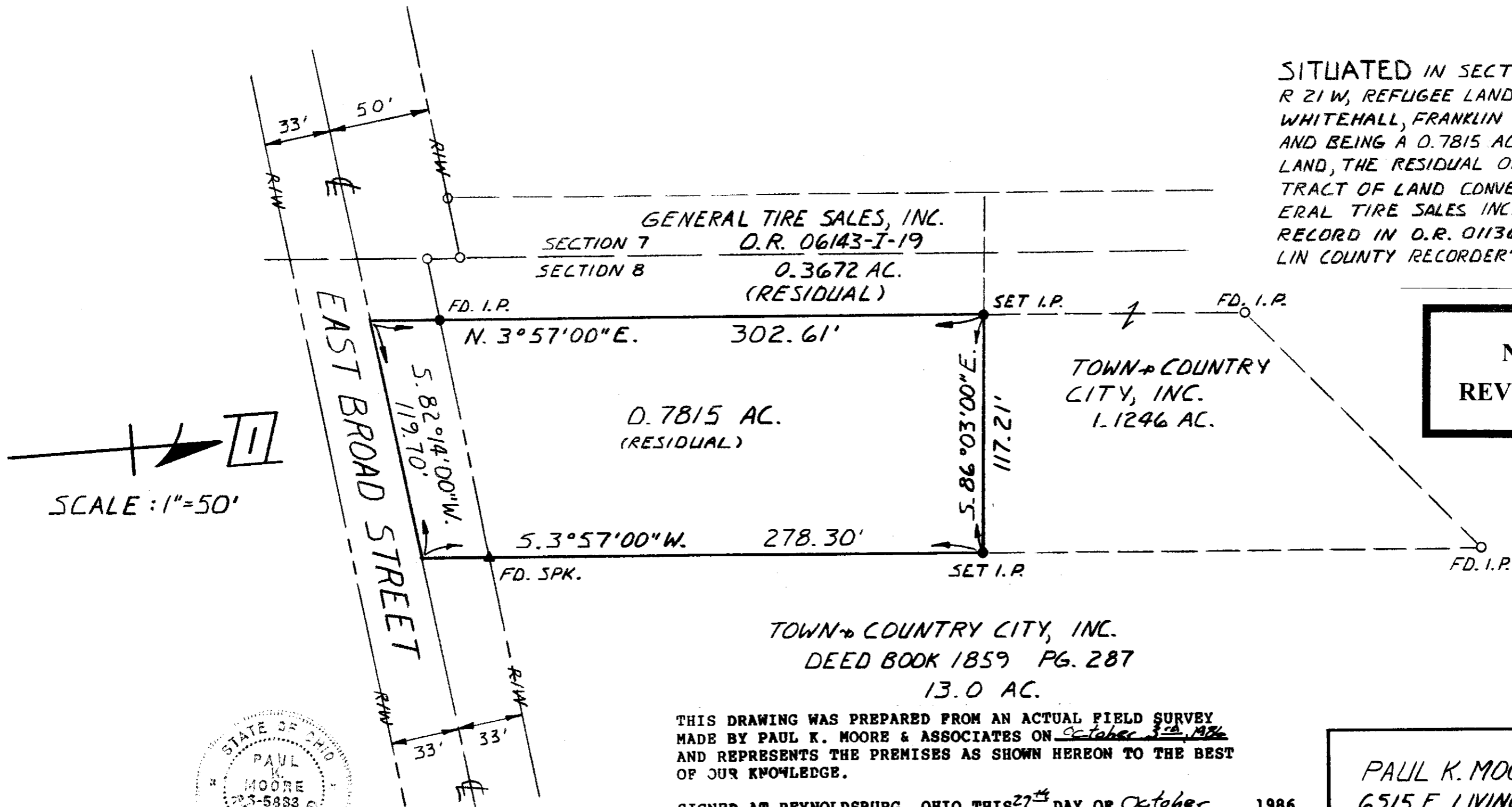


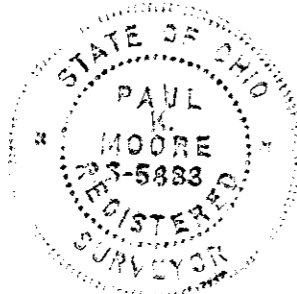
**SURVEY OF 0.7815 ACRE**  
 For  
**GENERAL TIRE SALES, INC.**

SITUATED IN SECTION 8, T12N,  
 R 21W, REFUGEE LANDS, CITY OF  
 WHITEHALL, FRANKLIN COUNTY, OHIO,  
 AND BEING A 0.7815 ACRE TRACT OF  
 LAND, THE RESIDUAL OF A 1.2835 AC.  
 TRACT OF LAND CONVEYED TO GEN-  
 ERAL TIRE SALES INC. BY DEED OF  
 RECORD IN O.R. 01136-B-15, FRANK-  
 LIN COUNTY RECORDER'S OFFICE.



**NOT  
 REVIEWED**

SCALE: 1"=50'



TOWN & COUNTRY CITY, INC.  
 DEED BOOK 1859 PG. 287  
 13.0 AC.

THIS DRAWING WAS PREPARED FROM AN ACTUAL FIELD SURVEY  
 MADE BY PAUL K. MOORE & ASSOCIATES ON October 3<sup>rd</sup>, 1986  
 AND REPRESENTS THE PREMISES AS SHOWN HEREON TO THE BEST  
 OF OUR KNOWLEDGE.

SIGNED AT REYNOLDSBURG, OHIO THIS 27<sup>th</sup> DAY OF October 1986.

*Paul K. Moore*

PAUL K. MOORE, REGISTERED SURVEYOR NO. 5883

PAUL K. MOORE + ASSOC.  
 6515 E. LIVINGSTON AVE - ST. 11  
 REYNOLDSBURG OHIO 43068  
 DWN. BY: VPL LKD. BY: 10-2-86