

VIRGINIA MILITARY NUMBER 3011  
 CITY OF DUBLIN  
 TOWNSHIP OF WASHINGTON  
 COUNTY OF FRANKLIN  
 STATE OF OHIO



PLAT OF SURVEY

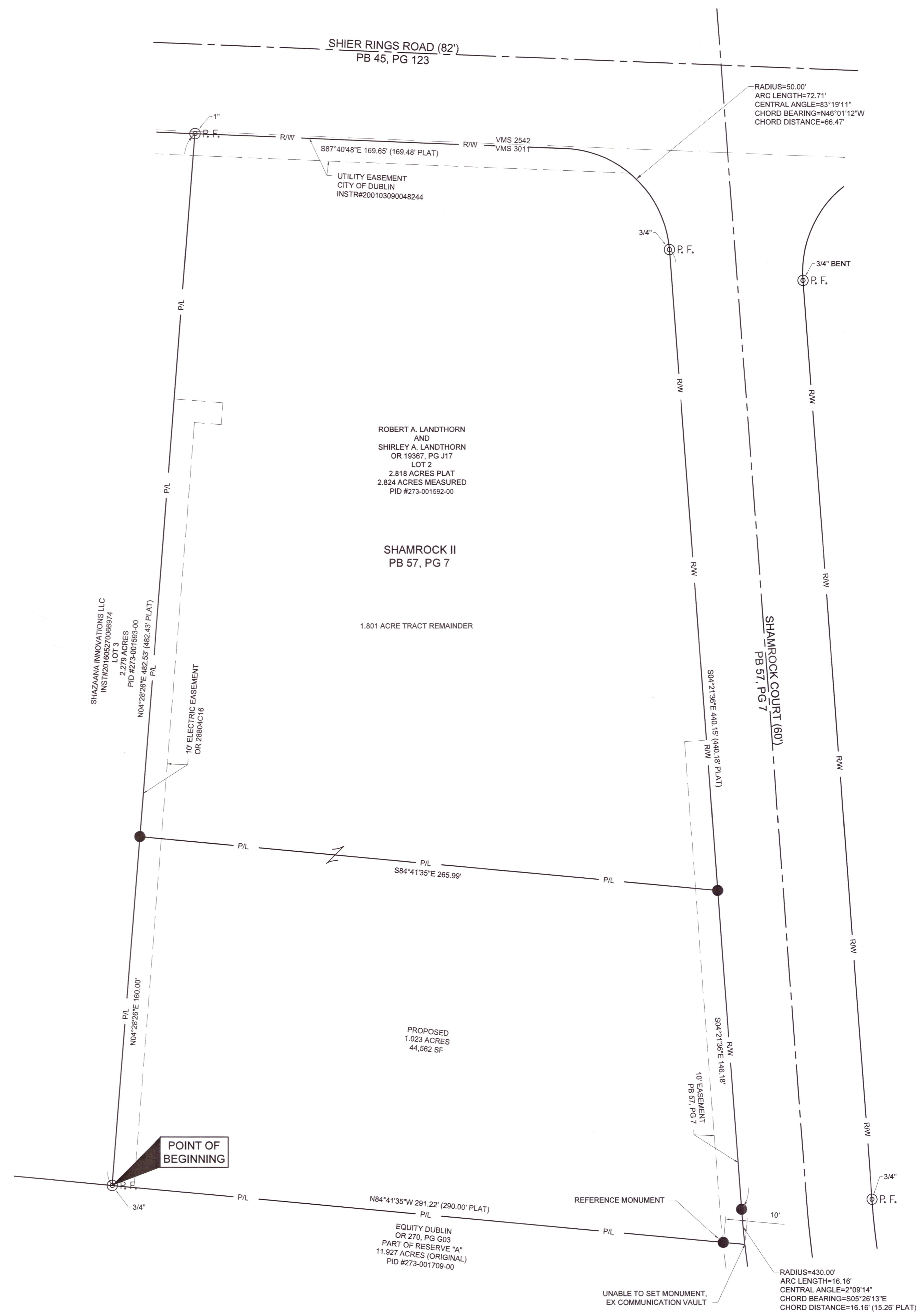
6199 SHAMROCK CT

1  
1

**RECEIVED**

MAY 09 2023

Franklin County Engineer  
 Cornell R. Robertson, P.E., P.S.



**SURVEY SYMBOLOGY**

- I.P.F. IRON PIN FOUND
- ⊙ P.F. IRON PIPE FOUND
- IRON PIN SET-5/8"ØX30" LONG REBAR WITH A CAP THAT READS "CW DESIGN GROUP"

**LINWORK SYMBOLOGY**

- CENTERLINE
- EASEMENT
- P/L PROPERTY LINE
- R/W RIGHT-OF-WAY

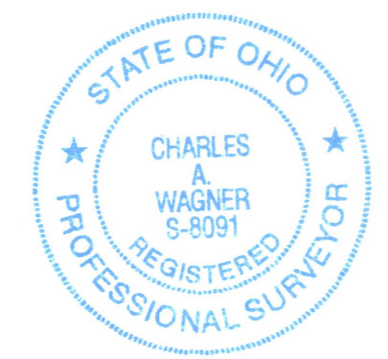
**BASIS OF BEARINGS**

THE BEARINGS SHOWN ON THIS PLAT ARE BASED ON THE OHIO STATE PLANE COORDINATE SYSTEM, SOUTH ZONE, NAD83 (2011) EPOCH 2010. SAID BEARINGS ORIGINATED FROM A FIELD TRAVERSE WHICH WAS TIED (REFERENCED) TO SAID COORDINATE SYSTEM BY GPS OBSERVATIONS AND OBSERVATIONS OF SELECTED STATIONS IN THE OHIO DEPARTMENT OF TRANSPORTATION REAL-TIME-NETWORK. THE PORTION OF THE WEST LINE OF LOT, HAVING A BEARING OF NORTH 04°28'26" EAST AND MONUMENTED AS SHOWN HEREON, IS DESIGNATED THE 'BASIS OF BEARING' FOR THIS PLAT.

SOURCE DOCUMENTS AND AUDITOR'S PARCEL NUMBERS ARE SHOWN ON PLAT.

THIS PLAT WAS BASED ON A FIELD SURVEY CONDUCTED BY CW DESIGN GROUP, LLC UNDER MY GUIDANCE IN SEPTEMBER 2022.

*Noted*  
 City of Dublin - Planning



CW Design Group  
 ENGINEERS & SURVEYORS

PHONE: 614-846-9279  
 972 Linkfield Drive  
 Worthington, Ohio 43085

*Charles A. Wagner*  
 CHARLES A. WAGNER, S-8091 DATE 5/1/2023  
 CW DESIGN GROUP, LLC



xBase\_6199Shamrock.dwg - February 06, 2023 @ 10:44am - © 2023