

# Parcel Exhibit

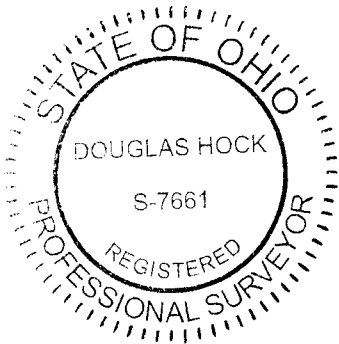
~0.609 Ac. & 0.557 Ac.~

City of New Albany, Franklin County, Ohio  
 Quarter Township 3, Township 2, Range 16  
 United States Military Lands

ADVANCED CIVIL DESIGN, INC.

Douglas R. Hock, P.S. 7661

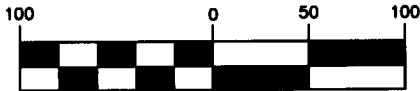
Date: 5/8/23



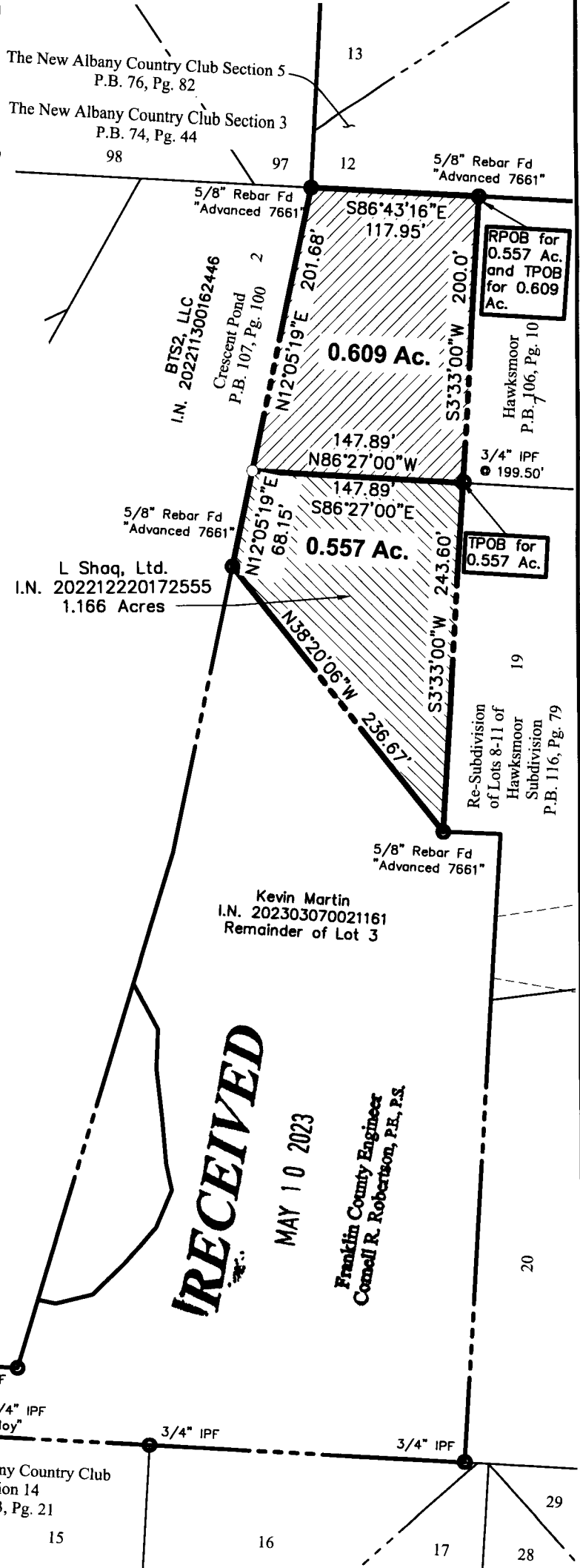
## Legend

- Iron Rod Found
- Iron Pipe Found
- ✕ PK Nail Found
- Iron Pin Set
- ✕ PK Nail Set

## GRAPHIC SCALE



( IN FEET )  
 1 inch = 100 ft.



**RECEIVED**

MAY 10 2023

Franklin County Engineer  
 Cornell R. Robertson, P.E., P.S.


Crescent Pond (Private)  
 See Note "C" on P.B. 107, Pg. 101 and I.N. 199707010036780 for pedestrian and vehicular access

Iron pins set are 5/8" diameter rebar, 30" long and capped Advanced 7661.

This exhibit is based on information obtained from the Franklin County Auditor's and Franklin County Recorder's Office and information obtained from an actual field survey conducted in November of 2022.

The basis of bearings used for this exhibit are based on the NAD83 Ohio State Plane Coordinate System, South Zone (NSRS 2011) which determines the bearing for the north line of Lot 3 of Crescent Pond of record in Plat Book 107, Page 100 to be S86°43'16"E.

DRAWN BY: DRH	JOB NO.: 23-0001-1360
DATE: 03/10/2023	CHECKED BY: TMW



**ADVANCED CIVIL DESIGN**  
 ENGINEERS SURVEYORS

781 Science Boulevard ~ Suite 100  
 Gahanna, Ohio 43230  
 ph 614.428.7750  
 fax 614.428.7755

Z:\23-0001-1360\dwg\23-0001-1360 ac lot line adj.dwg page 1 May 08, 2023 1:26:33pm d:hock