



Evans, Mechwart, Hambleton & Tilton, Inc.
 Engineers - Surveyors - Planners - Scientists
 5600 New Albany Road, Columbus, OH 43054
 Phone: 614.775.4500 Toll Free: 888.775.3648
 emht.com

EXHIBIT B
 SURVEY OF ACREAGE PARCEL
 2-QC ~ FRANKLIN STREET EXTENSION
 SURVEY NO. 2542, VIRGINIA MILITARY DISTRICT
 CITY OF DUBLIN, COUNTY OF FRANKLIN, STATE OF OHIO

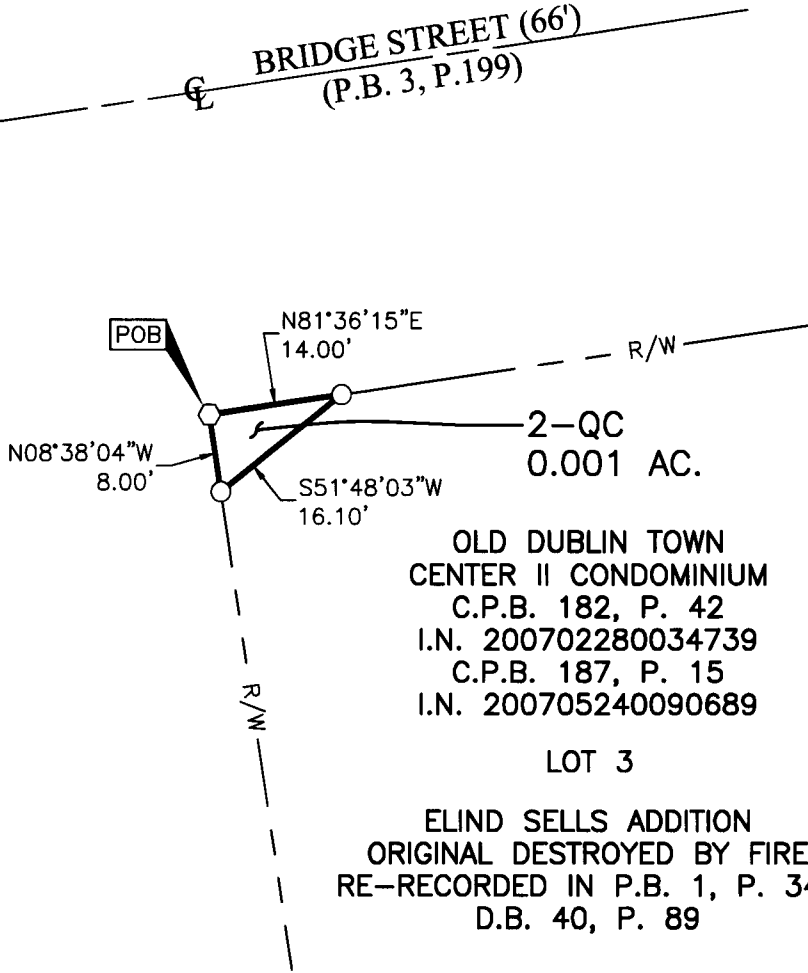
Date: November 21, 2022 Scale: 1" = 20' Job No: 2021-1405 Sheet No: 1 of 1

RECEIVED

APR 25 2023

Franklin County Engineer
 Cornell R. Robertson, F.E., P.S.

FRANKLIN STREET (66')
 (ORIGINAL DESTROYED BY FIRE
 RE-RECORDED IN P.B. 1, P. 347
 D.B. 40, P. 89)



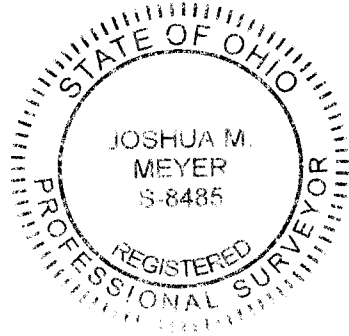
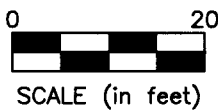
OLD DUBLIN TOWN
 CENTER II CONDOMINIUM
 C.P.B. 182, P. 42
 I.N. 200702280034739
 C.P.B. 187, P. 15
 I.N. 200705240090689
 LOT 3
 ELIND SELLS ADDITION
 ORIGINAL DESTROYED BY FIRE
 RE-RECORDED IN P.B. 1, P. 347
 D.B. 40, P. 89

BASIS OF BEARINGS:

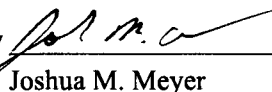
The bearings herein are based on the Ohio State Plane Coordinate System South Zone as per NAD83 (1986 Adjustment). Control for bearings was from coordinates of monuments FRANK 73 and FRANK 74, having a bearing of South 73° 57' 18" East, established by the Franklin County Engineering Department, using Global Positioning System procedures and equipment.

SURVEY NOTE:

This survey was prepared using documents of record, prior plats of survey, and observed evidence located by an actual field survey in March 2022.



- Iron Pin Set
 - ◌ Magnetic Nail Set
- I.P. Set are 13/16" I.D. iron pipes
 30" long with cap inscribed EMHT INC.

By 
 Joshua M. Meyer
 Professional Surveyor No. 8485
 jmeyer@emht.com

11-21-2022
 Date

J:\20211405\DWG\CASHIETS\BOUNDARY\20211405-VS-BNDY-02.DWG plotted by FERGUSON, DAVID on 11/21/2022 12:42:31 PM last saved by DFERGUSON on 11/21/2022 12:42:28 PM