



This preliminary approval, along with the original documents and plat of survey, are prepared by the surveyor, signed, sealed and dated in blue ink.



Evans, Mechwart, Hambleton & Tilton, Inc.
Engineers • Surveyors • Planners • Scientists
5500 New Albany Road, Columbus, OH 43054
Phone: 614.775.4500 Toll Free: 888.775.3648
emht.com

SURVEY OF ACREAGE PARCEL

HALF SECTION 7, SECTION 7, TOWNSHIP 16, RANGE 20
REFUGEE LANDS

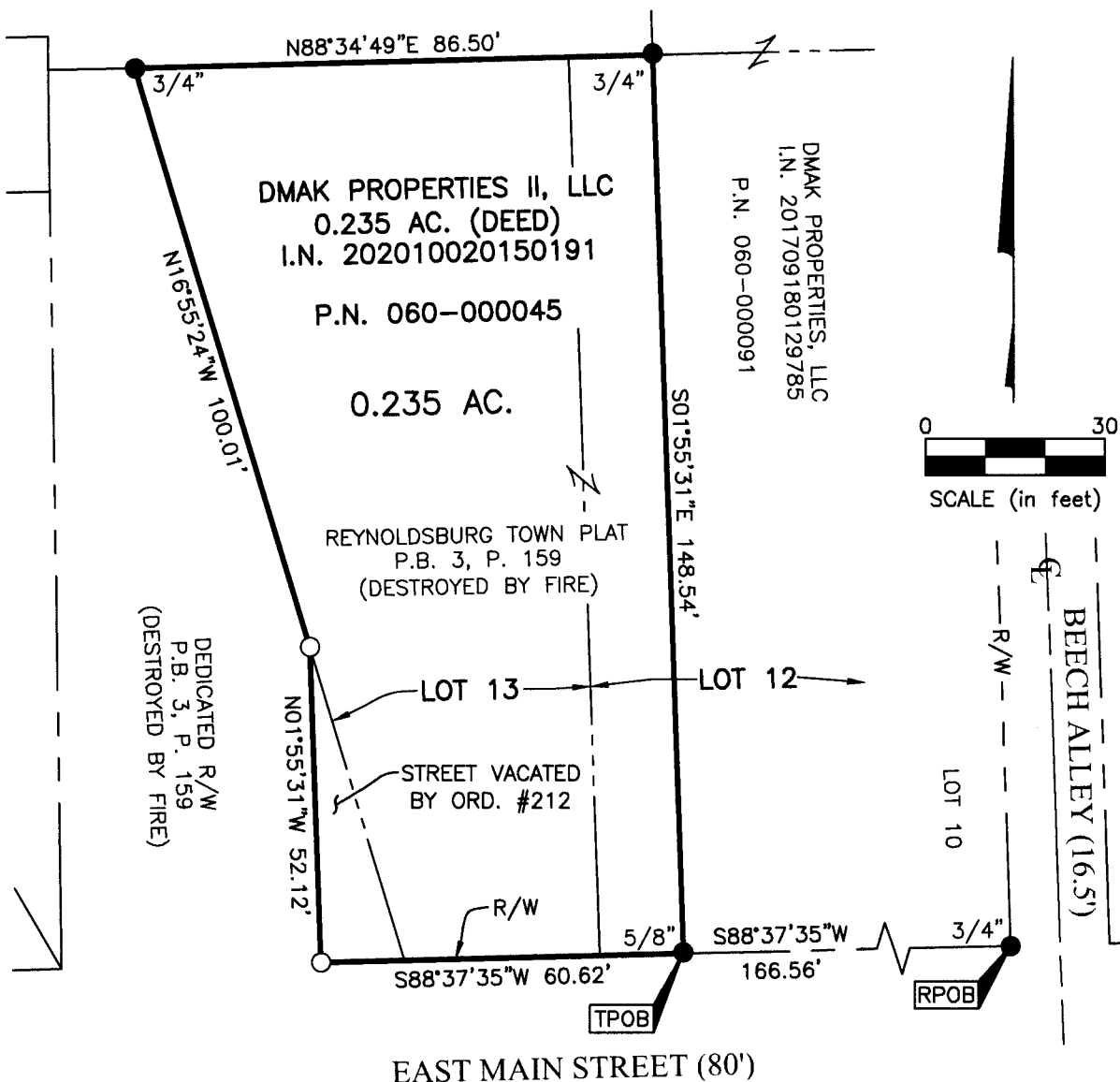
CITY OF REYNOLDSBURG, COUNTY OF FRANKLIN, STATE OF OHIO

Date: September 26, 2022

Scale: 1" = 30'

Job No: 2022-0686

Sheet No: 1 of 1



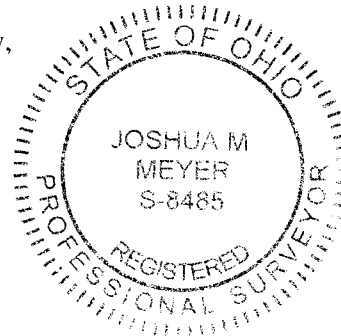
J:\20220686\DWG\ASHEETS\BOUNDARY\20220686-VS-BNDY-01.DWG plotted by WEBB, TEAGUE on 9/27/2022 8:15:35 AM last saved by TWEBB on 9/27/2022 8:14:58 AM

BASIS OF BEARINGS:

The bearings are based on the Ohio State Plane Coordinate System, South Zone, NAD83 (1986 Adjustment). Control for bearings was from coordinates of monuments REYNOLDSBURG and HOWELL2, having a bearing of North 56°30'34" West, as established by the Franklin County Engineering Department using Global Positioning Systems procedures and equipment.

SURVEY NOTE:

This survey was prepared using documents of record, prior plats of survey, and observed evidence located by an actual field survey in August 2022.



- Iron Pin Set
- Iron Pipe Found

I.P. Set are 13/16" I.D. iron pipes
30" long with cap inscribed EMHT INC.

By
Joshua M. Meyer
Professional Surveyor No. 8485
jmeyer@emht.com

9-26-2022
Date