



Evans, Mechwart, Hambleton & Tilton, Inc.  
 Engineers • Surveyors • Planners • Scientists  
 5500 New Albany Road, Columbus, OH 43054  
 Phone: 614.775.4500 Toll Free: 888.775.3648  
 emht.com

# LEASE AREA EXHIBIT

QUARTER TOWNSHIP 4, TOWNSHIP 2, RANGE 19  
 UNITED STATES MILITARY DISTRICT  
 CITY OF COLUMBUS, COUNTY OF FRANKLIN, STATE OF OHIO

Date: December 28, 2022

Scale: 1" = 200'

Job No: 2022-0615

Sheet No: 1 of 1

### BASIS OF BEARINGS:

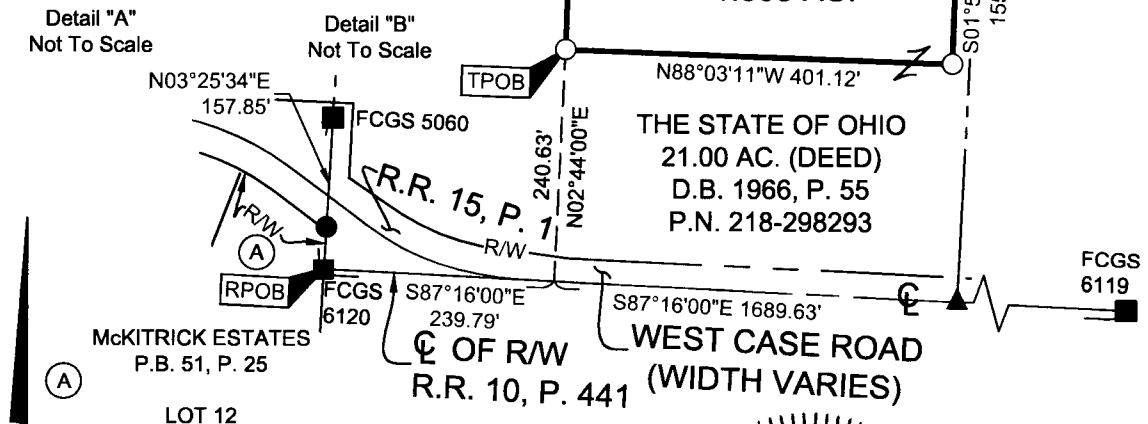
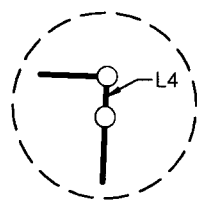
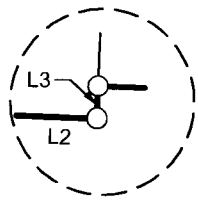
The bearings shown hereon are based on the Ohio State Plane Coordinate System, South Zone, NAD 83 (NSRS2007). The portion of the centerline of West Case Road, having a bearing of South 87° 16' 00" East and monumented as shown hereon, is designated as the "basis of bearings" for this survey.

### SURVEY NOTE:

This survey was prepared using documents of record, prior plats of survey, and observed evidence located by an actual field survey.

LINE TABLE		
LINE	BEARING	DISTANCE
L1	N01°53'40"E	155.30'
L2	S88°03'11"E	68.00'
L3	N01°56'51"E	9.68'
L4	S02°32'26"W	9.38'

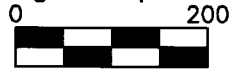
J:\20220615\DWG\04SHEETS\BOUNDARY\20220615-VS-BNDY-01.DWG plotted by KING, BRANDON on 12/28/2022 9:21:51 AM (last saved by BKING on 12/28/2022 9:20:50 AM)



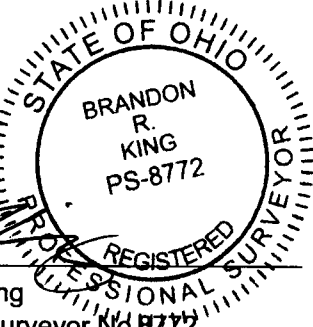
THE STATE OF OHIO  
 TRACT NO. 1  
 9.5 AC. (DEED)  
 D.B. 1784, P. 299

- = MON. FND.
- = I.P. FND.
- = I.P. SET
- ▲ = R.R. SPK. FND.

I.P. Set are 13/16" I.D. iron pipes  
 30" long with cap inscribed EMHT INC.



SCALE (in feet)



By *Brandon R. King*  
 Brandon R. King  
 Professional Surveyor No. 8772  
 bking@emht.com

12-28-2022  
 Date