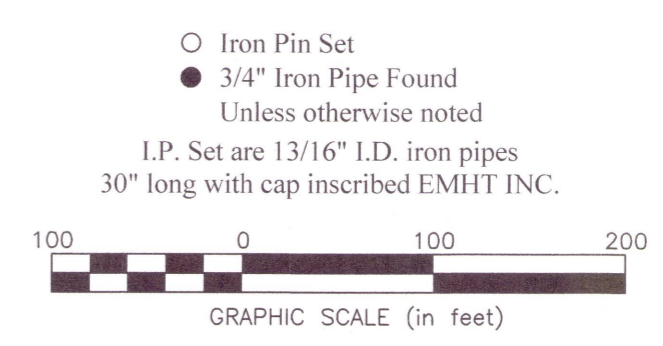
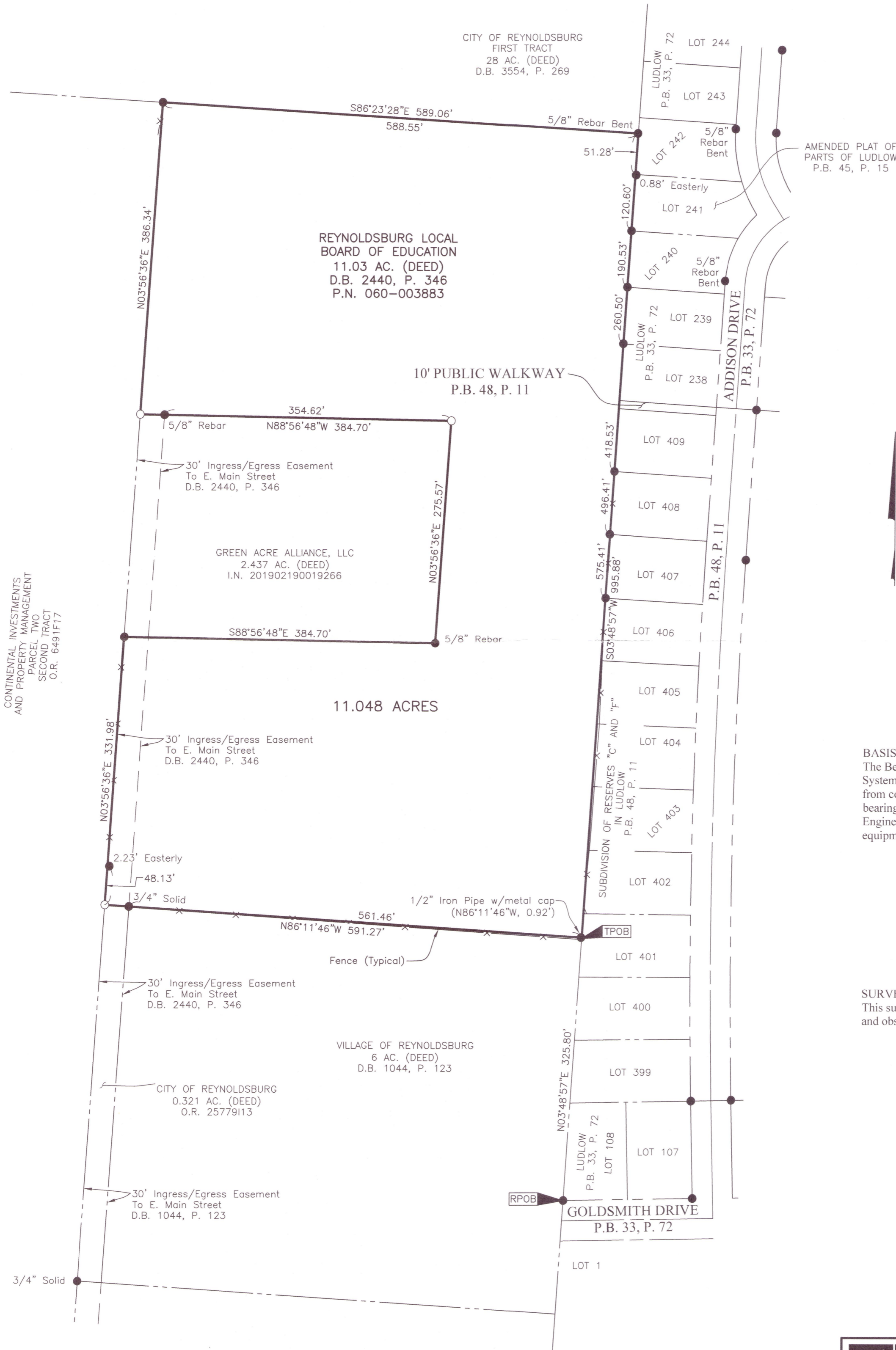


SURVEY OF ACREAGE PARCEL

HALF SECTION 9, SECTION 8, TOWNSHIP 16, RANGE 20

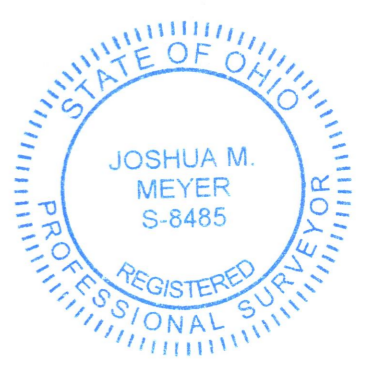
REFUGEE LANDS

CITY OF REYNOLDSBURG, COUNTY OF FRANKLIN, STATE OF OHIO



BASIS OF BEARINGS:
 The Bearings shown hereon are based on the Ohio State Plane Coordinate System South Zone as per NAD83 (NSRS2007). Control for bearings was from coordinates of monuments GLENREST and FRANK48, having a bearing of North 08° 32' 44" East, established by the Franklin County Engineering Department, using Global Positioning System procedures and equipment.

SURVEY NOTE:
 This survey was prepared using documents of record, prior plats of survey, and observed evidence located by an actual field survey in August 2022.



By *Joshua M. Meyer* 9-8-2022 Date
 Joshua M. Meyer
 Professional Surveyor No. 8485
 jmeyer@emht.com

PRELIMINARY APPROVAL
 Cornell R. Robertson, P.E., P.S.
 BY: *rwj*
 09/08/2022
PENDING ORIGINALS
*Submitted via digital format
 Please return this approval, along with the original description and plat of survey, as prepared by the surveyor, signed, sealed and dated in blue ink.

EMHT		Date: September 8, 2022
Evans, Mechwart, Hambleton & Tilton, Inc. Engineers • Surveyors • Planners • Scientists 5500 New Albany Road, Columbus, OH 43054 Phone: 614.775.4500 Toll Free: 888.775.3648 emht.com		Scale: 1" = 100'
		Job No: 2022-0688
		Sheet: 1 of 1
REVISIONS		
MARK	DATE	DESCRIPTION