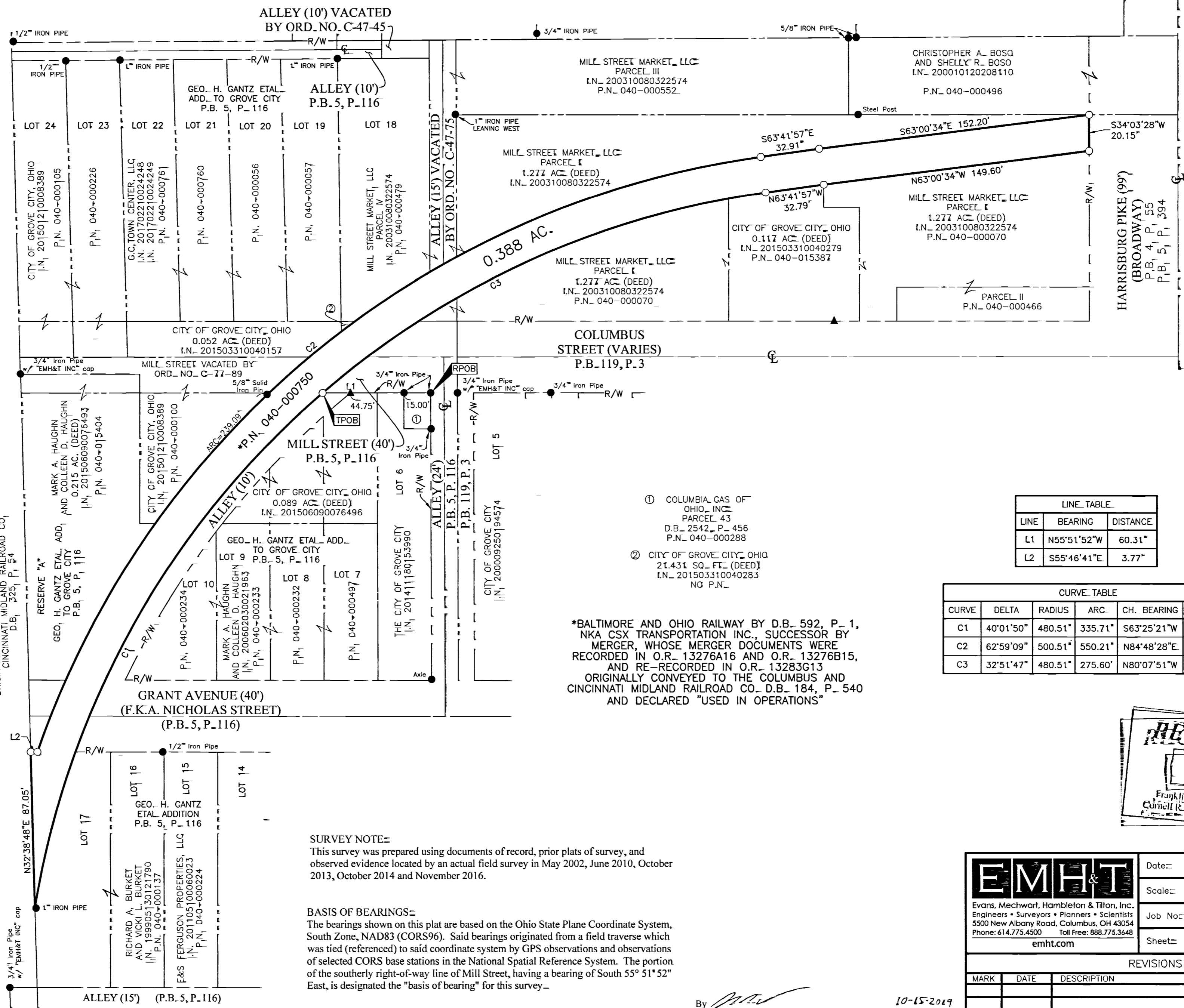


SURVEY OF ACREAGE PARCEL

SURVEY NUMBER 1388

VIRGINIA MILITARY DISTRICT

CITY OF GROVE CITY, COUNTY OF FRANKLIN, STATE OF OHIO



BALTIMORE AND OHIO RAILWAY BY D.B. 592, P. 1, NKA CSX TRANSPORTATION INC., SUCCESSOR BY MERGER, WHOSE MERGER DOCUMENTS WERE RECORDED IN O.R. 13276A16 AND O.R. 13276B15, AND RE-RECORDED IN O.R. 13283G13 AND CINCINNATI MIDLAND RAILROAD CO. D.B. 184, P. 540

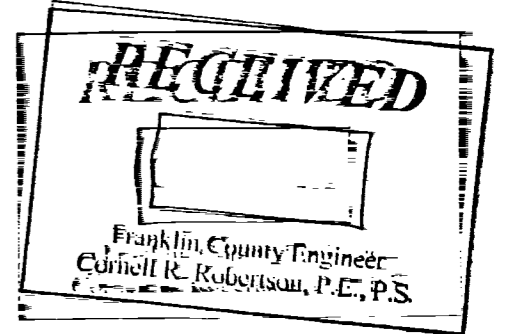
*BALTIMORE AND OHIO RAILWAY BY D.B. 592, P. 1, NKA CSX TRANSPORTATION INC., SUCCESSOR BY MERGER, WHOSE MERGER DOCUMENTS WERE RECORDED IN O.R. 13276A16 AND O.R. 13276B15, AND RE-RECORDED IN O.R. 13283G13 ORIGINALLY CONVEYED TO THE COLUMBUS AND CINCINNATI MIDLAND RAILROAD CO. D.B. 184, P. 540 AND DECLARED "USED IN OPERATIONS"

LINE TABLE		
LINE	BEARING	DISTANCE
L1	N55°51'52"W	60.31'
L2	S55°46'41"E	3.77'

CURVE TABLE					
CURVE	DELTA	RADIUS	ARC	CH. BEARING	CH. DIST.
C1	40°01'50"	480.51'	335.71'	S63°25'21"W	328.93'
C2	62°59'09"	500.51'	550.21'	N84°48'28"E	522.92'
C3	32°51'47"	480.51'	275.60'	N80°07'51"W	271.84'

SURVEY NOTE:
This survey was prepared using documents of record, prior plats of survey, and observed evidence located by an actual field survey in May 2002, June 2010, October 2013, October 2014 and November 2016.

BASIS OF BEARINGS:
The bearings shown on this plat are based on the Ohio State Plane Coordinate System, South Zone, NAD83 (CORS96). Said bearings originated from a field traverse which was tied (referenced) to said coordinate system by GPS observations and observations of selected CORS base stations in the National Spatial Reference System. The portion of the southerly right-of-way line of Mill Street, having a bearing of South 55° 51' 52" East, is designated the "basis of bearing" for this survey.



- = STONE FND.
- = MON. FND.
- = I.P. FND.
- = I.P. SET
- = MAG. NAIL FND.
- = MAG. NAIL SET
- ▲ = R.R. SPK. FND.
- △ = R.R. SPK. SET
- ◆ = P.K. NAIL FND.

I.P. Set are 13/16" I.D. iron pipes 30" long with cap inscribed EMHT INC.

GRAPHIC SCALE (in feet)

By *JM*
Joshua M. Meyer
Professional Surveyor No. 8485

10-15-2019
Date

<p>Evans, Mechwart, Hambleton & Tilton, Inc. Engineers • Surveyors • Planners • Scientists 5500 New Albany Road, Columbus, OH 43054 Phone: 614.775.4500 Toll Free: 888.775.3648 emht.com</p>	Date: October 15, 2019	
	Scale: 1" = 40'	
	Job No: 2016-0121	
	Sheet: 1 of 1	
REVISIONS		
MARK	DATE	DESCRIPTION

10/15/2019 9:44:34 AM last saved by: SCHREIBER, JACOB on 10/15/2019 9:44:31 AM
 10/15/2019 9:44:34 AM last saved by: SCHREIBER, JACOB on 10/15/2019 9:44:31 AM
 10/15/2019 9:44:34 AM last saved by: SCHREIBER, JACOB on 10/15/2019 9:44:31 AM