



COMPASS
INFRASTRUCTURE GROUP
 2800 Corporate Center, Suite 100
 Columbus, OH 43231
 Tel: 614-687-3273

Sheet 1 of 1

Date : 08/22/2022

Job Number: 10031

Drafted By: ATJ

Reviewed By: ATJ

Scale: 1" = 50'

4330 & 4380
 WESTERVILLE
 ROAD
 WAYNE M POST,
 TRUSTEE UNDER
 THE WAYNE M.
 POST TRUST

Exhibit "B"
 1.396 ACRE & 0.457
 ACRE TRACTS



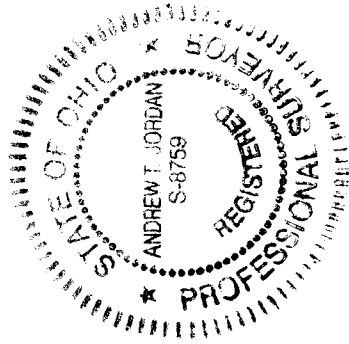
Bearings described herein are based on North 29 degrees 42 minutes 19 seconds East for the centerline of right-of-way of Westerville Road, measured from grid north as referenced by FCGS monuments 1444 and 1210, referenced to the Ohio State Plane Coordinate System (South Zone) and North American Datum of 1983 (2011 adjustment), as established utilizing GPS survey solution.

I hereby Certify that:
 This drawing represents the results of an actual field survey of the premise performed by Compass Infrastructure Group, LLC, in August 2022 and is true and correct to the best of my knowledge and belief.

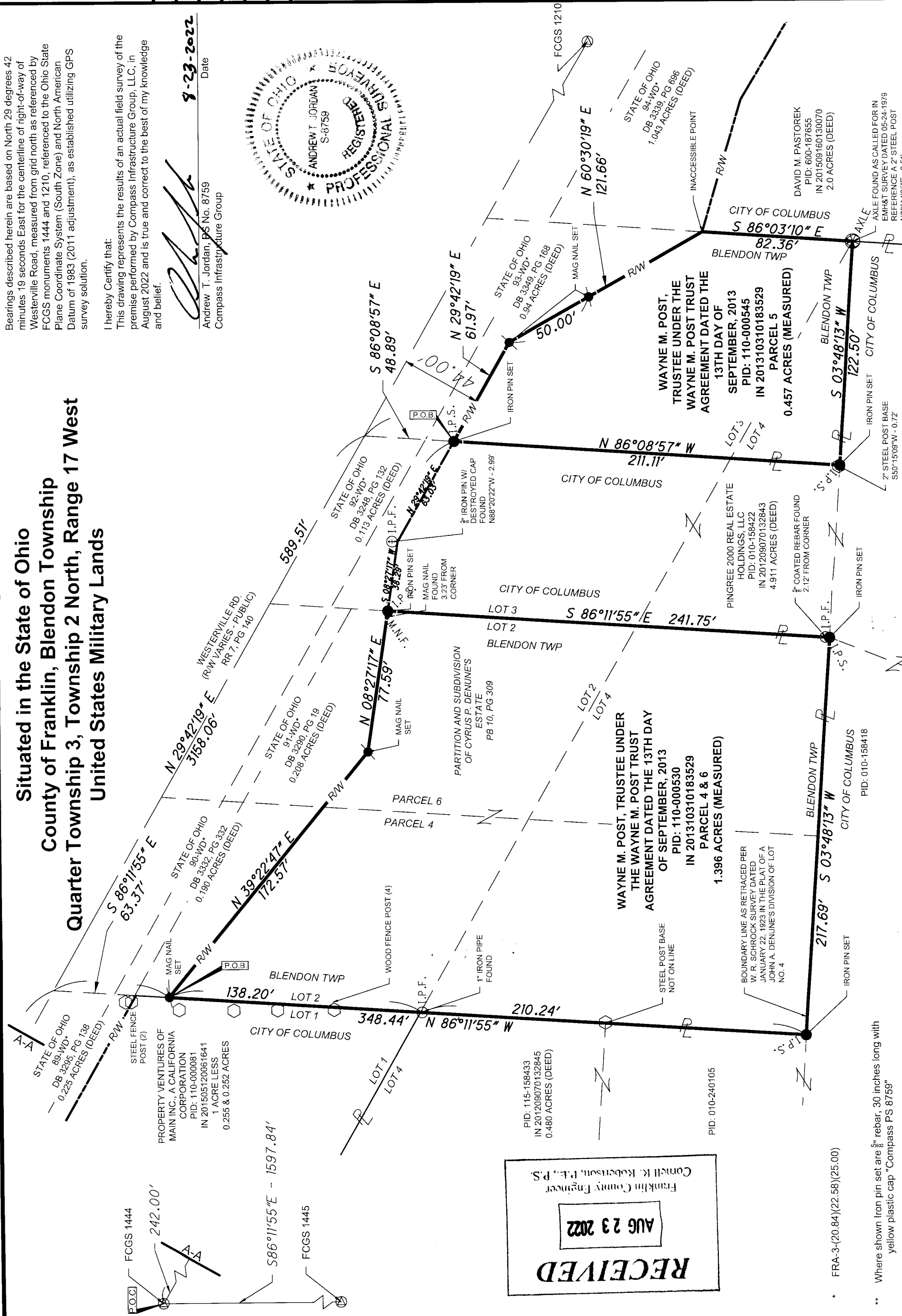
Andrew T. Jordan
 Andrew T. Jordan, P.S. No. 8759
 Compass Infrastructure Group

9-23-2022

Date



Situated in the State of Ohio
County of Franklin, Blendon Township
Quarter Township 3, Township 2 North, Range 17 West
United States Military Lands



RECEIVED
 AUG 23 2022
 Franklin County Engineer
 Cornelia K. Robertson, P.E., P.S.

* FRA-3-(20.84)(22.58)(25.00)

** Where shown iron pin set are 5/8" rebar, 30 inches long with yellow plastic cap "Compass PS 8759"